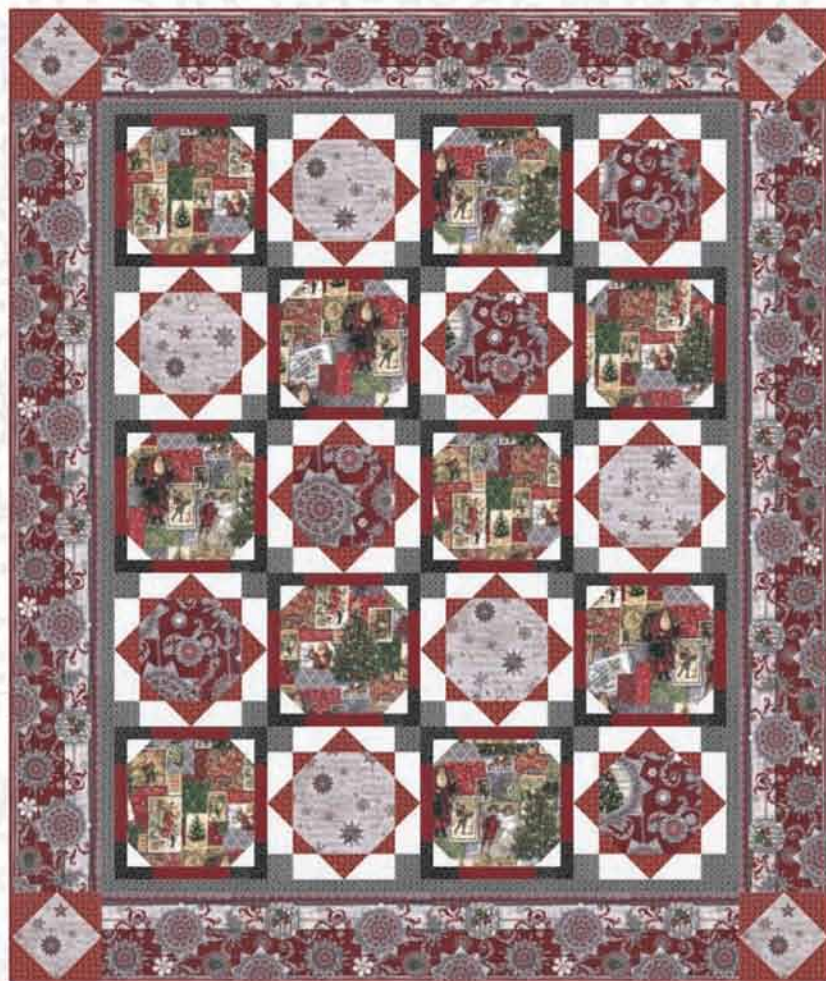


Punch Studio® PS

HOLIDAY SHIMMER

Quilt design by Nancy Mahoney featuring fabrics from the "Holiday Shimmer" collection by Punch Studio for Hoffman California Fabrics



Quilt Size 64 1/2" x 76 1/2"



L7315
28S-Silver/Silver



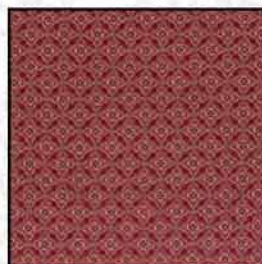
L7316
5S-Red/Silver



L7317
5S-Red/Silver



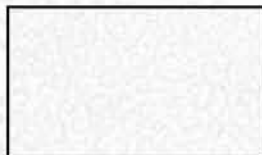
L7318
48S-Gray/Silver



L7319
5S-Red/Silver



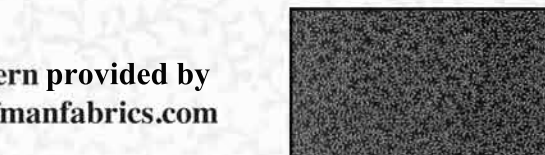
L7319
48S-Gray/Silver



J9216
3S-White/Silver



G8555
78S-Scarlet/Silver



J9216
4S-Black/Silver

More about

Punch Studio® PS

Chances are you've purchased a lovely note pad, an elegant vase, or a stylish home accessory featuring finely decorative artwork by Punch Studio and not realized it. This brand can be found at booksellers, boutiques, home-decor stores and gift shops.

The Punch Studio look is much in demand for its sophisticated and detailed artwork that is timeless and invites repeat viewing. See more by this stationery designer at www.punchstudio.com.

Free pattern provided by
www.hoffmanfabrics.com

HOFFMAN FABRICS
CALIFORNIA-INTERNATIONAL

“Holiday Shimmer” featuring fabrics by Punch Studio for Hoffman California Fabrics

Yardage Chart

Red/Silver Colorway	Pine/Gold Colorway	
L7315 28S-Silver/Silver	L7315 141G-Pine/Gold	1 yard
L7316 5S-Red/Silver	L7316 141G-Pine/Gold	$\frac{5}{8}$ yard
L7317 5S-Red/Silver	L7317 141G-Pine/Gold	1 $\frac{7}{8}$ yards
L7318 48S-Gray/Silver	L7318 33G-Cream/Gold	$\frac{3}{4}$ yard
L7319 5S-Red/Silver	L7319 231G-Garnet/Gold	$\frac{7}{8}$ yard
L7319 48S-Gray/Silver	L7319 44G-Forest/Gold	$\frac{5}{8}$ yard
J9216 4S-Black/Silver*	G8555 60G-Hunter/Gold*	$\frac{3}{8}$ yard
G8555 78S-Scarlet/Silver	G8555 78G-Scarlet/Gold	$\frac{7}{8}$ yard
J9216 3S-White/Silver	J9216 33G-Cream/Gold	1 yard

*Yardage includes binding.

BACKING: Coordinate of your choice. 4 $\frac{3}{4}$ yards

Pine/Gold Colorway



L7315
141G-Pine/Gold



L7316
141G-Pine/Gold



L7317
141G-Pine/Gold



L7318
33G-Cream/Gold



L7319
231G-Garnet/Gold



L7319
44G-Forest/Gold



G8555
60G-Hunter/Gold



G8555
78G-Scarlet/Gold



J9216
33G-Cream/Gold

Holiday Shimmer

Fabric collection by Hoffman Fabrics

Quilt design by Nancy Mahoney • Quilt size: 64½" x 76½" • Block size: 12" x 12"

Yardage

	Red-Gold Quilt	Red-Silver Quilt	Amount	Used for
Fabric A	L7315-141G Pine Gold	L7315-28S Silver Silver	1 yard	Blocks
Fabric B	L7316-141G Pine Gold	L7316-5S Red Silver	5/8 yard	Blocks
Fabric C	L7317-141G Pine Gold	L7317-5S Red Silver	1-7/8 yards	Outer border
Fabric D	L7318-33G Cream Gold	L7318-48S Gray Silver	3/4 yard	Blocks
Fabric E	L7319-231G Garnet Gold	L7319-5S Red Silver	7/8 yard	Blocks
Fabric F	L7319-44G Forest Gold	L7319-48S Gray Silver	5/8 yard	Blocks and inner border
Fabric G	G8555-60G Hunter Gold	J9216-4S Black Silver	3/8 yard	Blocks
Fabric H	G8555-78G Scarlet Gold	G8555-78S Scarlet Silver	7/8 yard	Blocks and binding
Fabric I	J9216-33G Cream Gold	J9216-3S White Silver	1 yard	Blocks
Backing: 4 ¾ yards of any <i>Holiday Shimmer</i> fabric				

Cutting

All strips are cut across the width of the fabric unless otherwise noted.

From fabric A, cut:

- (3) 10 ½" x 42" strips; cut into (10) 10 ½" squares

From fabric B, cut:

- (2) 8 ½" x 42" strips; cut into (5) 8 ½" squares

From fabric C, cut:

- (2) 7 ½" x 62 ½" *lengthwise* strips*
- (2) 7 ½" x 50 ½" *lengthwise* strips*

From fabric D, cut:

- (2) 8 ½" x 42" strips; cut into (5) 8 ½" squares
- (4) 7 ½" squares

From fabric E, cut:

- (8) 2 ½" x 42" strips; cut into (120) 2 ½" squares
- (2) 4" x 42" strips; cut into (16) 4" squares

From fabric F, cut:

- (3) 2 ½" x 42" strips; cut into (40) 2 ½" squares
- (6) 1 ½" x 42" strips. Piece the strips and cut (2) 1 ½" x 60 ½" strips and (2) 1 ½" x 50 ½" strips.

From fabric G, cut:

- (7) 1 ½" x 42" strips; cut into (40) 1 ½" x 3 ½" rectangles and (40) 1 ½" x 2 ½" rectangles

From fabric H, cut:

- (7) 1 ½" x 42" strips; cut into (40) 1 ½" x 6 ½" rectangles
- (8) 2 ¼" x 42" binding strips

From fabric I, cut:

- (3) 2 ½" x 42" strips; cut into (40) 2 ½" squares
- (5) 4 ½" x 42" strips; cut into (80) 2 ½" x 4 ½" rectangles

**Be sure to center the same stripe in the middle of each strip.*

Block A Assembly

1. Draw a diagonal line from corner to corner on the wrong side of each fabric I square. Place marked squares on diagonally opposite corners of a fabric A square, right sides together. Sew along the marked line and trim away the corner fabric, leaving a $\frac{1}{4}$ " seam allowance. Sew marked squares on the remaining two corners of the fabric A square and trim. Press the seam allowances toward the resulting triangles. Make 10 center units.

2. Sew fabric G $1\frac{1}{2}$ " x $2\frac{1}{2}$ " rectangles to both ends of a fabric H rectangle. Make 20 strips.

3. Sew fabric G $1\frac{1}{2}$ " x $3\frac{1}{2}$ " rectangles to both ends of a fabric H rectangle. Make 20 strips.

4. Sew strips from step 2 to opposite sides of a center unit. Then sew strips from step 3 to the top and bottom of the unit to complete a block. The block should measure $12\frac{1}{2}$ " square. Make 10 blocks.



Block B Assembly

5. Draw a diagonal line from corner to corner on the wrong side of each fabric E $2\frac{1}{2}$ " square. Place marked squares on diagonally opposite corners of a fabric B square, right sides together. Sew along the marked line and trim away the corner fabric, leaving a $\frac{1}{4}$ " seam allowance. Sew marked squares on the remaining two corners of the fabric B square and trim. Press the seam allowances toward the resulting triangles. Make five center units.

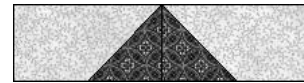
6. Repeat step 5, using 20 marked squares and the fabric D $8\frac{1}{2}$ " squares to make five center units.

7. Place a marked square on one end of a fabric I rectangle as shown. Sew along the marked line and trim away the corner fabric, leaving a $\frac{1}{4}$ " seam allowance.

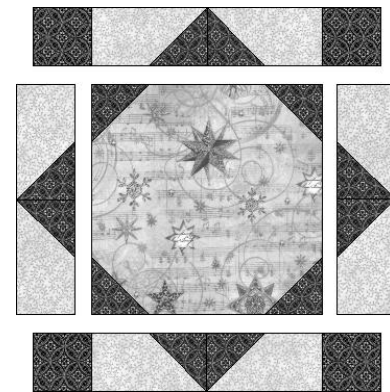
Press the seam allowances toward the resulting triangle. Make 40 units and 40 reversed units.



8. Join one unit and one reversed unit from step 7 as shown to make a side unit. Make 40 units.



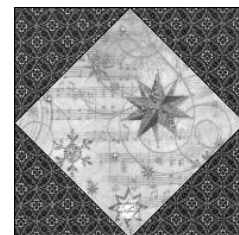
9. Lay out one center unit from step 6, four side units, and four fabric F squares in three rows as shown. Join the pieces into rows; join the rows to complete one block. The block should measure $12\frac{1}{2}$ " square. Make five blocks.



10. Repeat step 9, using the center units from step 5 to make five blocks.

Corner Block Assembly

11. Draw a diagonal line from corner to corner on the wrong side of each fabric E 4" square. Place marked squares on diagonally opposite corners of a fabric D $7\frac{1}{2}$ " square, right sides together. Sew along the marked line and trim away the corner fabric, leaving a $\frac{1}{4}$ " seam allowance. Sew marked squares on the remaining two corners of the fabric D square and trim. Press the seam allowances toward the resulting triangles. Make four corner blocks for the outer border.



Quilt Assembly

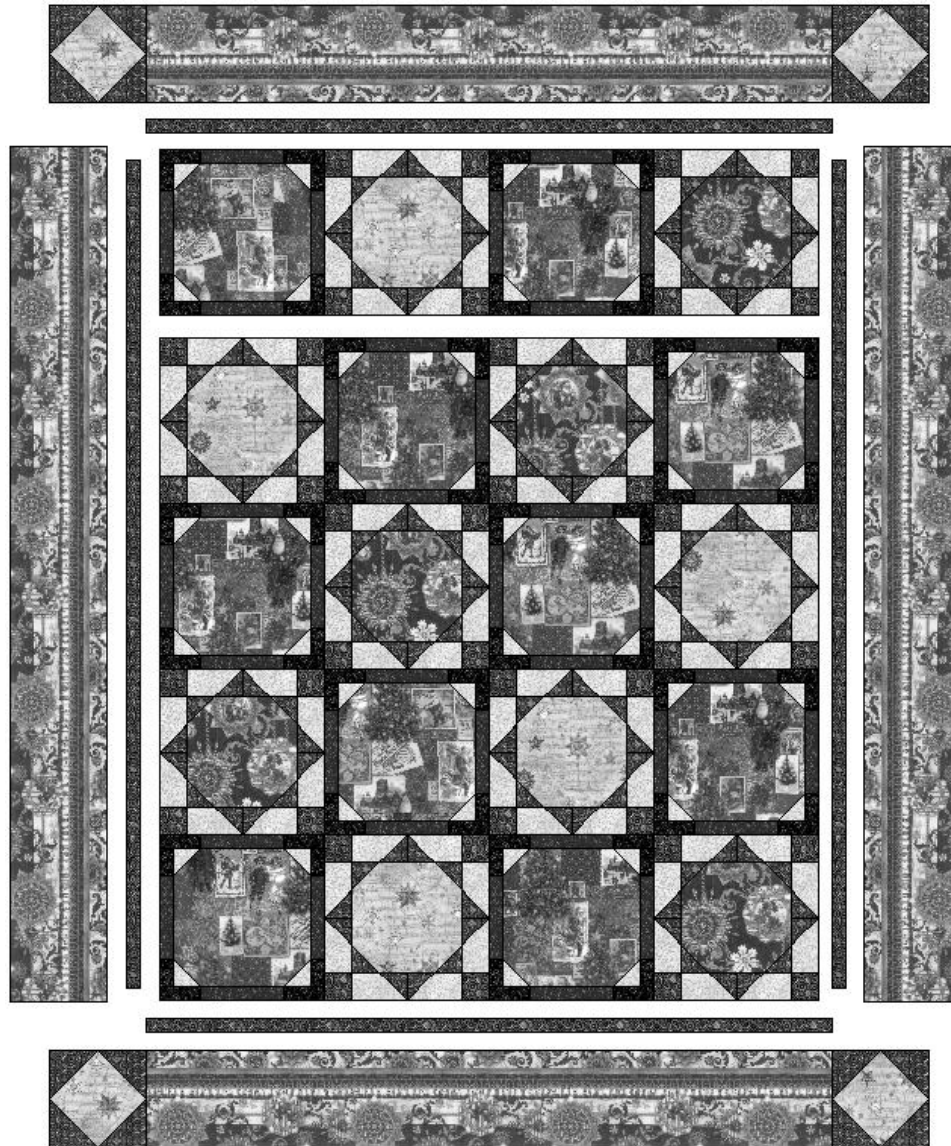
13. Lay out the blocks in five rows of four blocks each, alternating the blocks in each row and from row to row as shown in the quilt layout diagram. Join the blocks into rows; join the rows. The quilt top should measure $48\frac{1}{2}" \times 60\frac{1}{2}"$.

14. Sew the fabric F $60\frac{1}{2}"$ -long strips to opposite sides of the quilt-top center. Sew the fabric F $50\frac{1}{2}"$ -

long strips to the top and bottom of the quilt-top center.

15. Sew the fabric C $62\frac{1}{2}"$ -long strips to opposite sides of the quilt top. Sew corner blocks to the ends of the fabric C $50\frac{1}{2}"$ -long strips. Then sew these strips to the top and bottom of the quilt top.

16. Layer the quilt top with batting and backing; baste. Quilt as desired. Using the fabric H $2\frac{1}{4}"$ -wide strips, bind the edges to finish.



Quilt layout diagram