



BATTING COLLECTION

Wool • Cotton • Polyester • Mix • Bamboo
 Batting • Stabilizer • Fusible • Web Interfacing



Australia



Australia



USA



USA



USA



USA

Distributed by
 Tiffanies Treasures
 Auckland, New Zealand
 Ph +64-9-477 0155
 email – sales@tiffaniestreasures.co.nz
www.tiffaniestreasures.co.nz

Batting

Batting is the layer of insulation between the quilt top and back.

Batting adds the loft or thickness to your quilt and will help your quilt design stand out.
Batting will help your quilt lay flat and display well on a wall, a bed or hanging on a quilt rack.
Batting provides body & strength to bags to stand.

There is a wide variety of quilt battings available on the market. Like everything else, the variety can get overwhelming.

Main factors to consider picking the batting best suited to your project:

Loft: This means how thick or thin your batting is

Low Loft:	Thin - less bulky and works much easier
High Loft:	Thicker - if you really want to show off the quilting
Firm:	Especially for bags & other craft projects to provide body, shape & stiffness

Fibre: This defines what the batting is made of:

Polyester:	Less expensive, lightweight but very durable
Cotton:	Natural fibre- light and breathable, heaviest weight batting
Wool:	Natural fibre, beautiful to show off fancy machine quilting, resists folding and creasing and has great stitch-definition, warmer & light weight
Bamboo:	Eco-friendly, natural fibre - typically blended with Cotton – gives a great texture & drape to quilting
Mix:	Cotton/Poly, Wool/Poly, Silk/Poly - cost effective
Fusible:	This allows you to "baste" a quilt by simply ironing the layers together

Scrim: This is a thin layer of stabilizer on one or both sides of the batting to prevent the fibres from separating or stretching, often needle-punched onto the batting making it stronger and more stable. The benefit - quilting stitches can be further apart - as much as 8-12" apart

Stabilizer: Used to provide strength and security to fabrics being appliqued to other fabrics or to support machine embroidery. Medium to stiff weight fibre-like fabric, a Stabilizer is pinned or fused to the underside of the project prior to adding the appliques or doing the embroidery.

Benefit: without a Stabilizer, the stitches used for a machine applique or machine embroidery will pucker the fabric. The stabilizer allows the stitches to stay firmly on the top of the work, making a well-defined stitch or embroidery design.

Interfacing: Fabric sewn or fused for stiffening, reinforcing, and shape retention.

Fusible Web: Fusible web is a fibre that melts when exposed to heat. When placed between two pieces of fabric, the melting effect causes the fabrics to fuse together. It is not woven or knitted

We stock & distribute well reputed brands from USA, Australia to accomplish your project from a quilt to handbag or anything in between.



Australia



Australia



USA



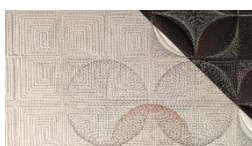
USA



USA



USA

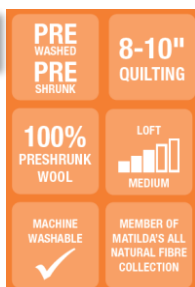


Matilda's own batting



Matilda's own presents you with one of the world's largest ranges of battings. Their manufacturing procedures, techniques & fibres are made to the highest possible standards resulting in the highest quality products. Matilda's own is made right here in Australia.

Pure Wool



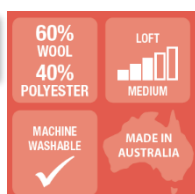
Pure Wool

- 100% Pure Australian Wool on Scrim
- Pre washed & Pre shrunk
- Fully machine washable
- Soft & easy to needle by hand or machine
- Fine scrim to lock in fibres & prevent bearding
- Great for those with allergies
- No resin, sprays, glues or bonding

Code	Size
M300-240	2.4m x 30m (Roll)
M320	2.4m x 2.75m (Queen Size)

Sample - M300

Wool/Poly



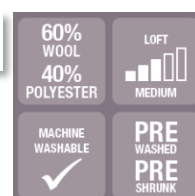
Wool/Poly

- 60% Wool, 40% Poly
- Pre washed & Pre shrunk
- Fully machine washable
- Soft & easy to needle by hand or machine
- Fine scrim to lock in fibres & prevent bearding
- Great for those with allergies
- No resin, sprays, glues or bonding

Code	Size
M100-150	1.5m x 30m (Roll)
M100-240	2.4m x 30m (Roll)
M100-310	3.1m x 30m (Roll)
M120	2.4m x 2.75m (Queen Size)
M140	3.1m x 3.1m (King Size)

Sample - M100

Wool/Poly Charcoal



Wool/Poly Charcoal

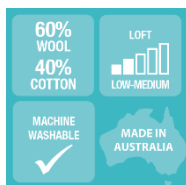
- 60% Wool, 40% Poly
- Pre washed & Pre shrunk
- Fully machine washable
- Soft & easy to needle by hand or machine
- Fine scrim to lock in fibres & prevent bearding
- Great for those with allergies
- No resin, sprays, glues or bonding
- Brings darker colour to life
- Not recommended for white or pale colours

Code	Size
M200-240	2.4m x 30m (Roll)
M220	2.4m x 2.75m (Queen Size)

Sample - M200

Care Instructions – To ensure that your batting lasts as long as your project, please take care when washing. The batting is machine washable. It is recommended washing with pH neutral, low phosphate fabric wash. Residual shrinkage is 2.5%

Wool/Cotton



Wool/Cotton

- 60% Wool, 40% Cotton
- Great for those with allergies
- Fully machine washable
- Soft & easy to needle by hand or machine
- Fine scrim to lock in fibres & prevent bearding
- No resin, sprays, glues or bonding
- Residual shrinkage 2.5%

Code	Size
M700-240	2.4m x 30m (Roll)

Sample – M700

Pure Cotton



Pure Cotton

- 100% Pure Australian cotton
- Pre washed & Pre shrunk
- Fully machine washable
- Soft & easy to needle by hand or machine
- Fine scrim to lock in fibres & prevent bearding
- No resin, sprays, glues or bonding

Code	Size
M400-150	1.5m x 30m (Roll)
M400-240	2.4m x 30m (Roll)
M420	2.4m x 2.4m (Queen Size)
M440	3.1m x 3.1m (King Size)

Sample – M400

Pure Cotton Bleached



Pure Cotton Bleached

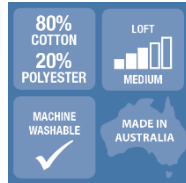
- 100% Pure Australian cotton
- Bleached cotton a white, white wadding
- Pre washed & Pre shrunk
- Fully machine washable
- Soft & easy to needle by hand or machine
- Fine scrim to lock in fibres & prevent bearding
- No resin, sprays, glues or bonding

Code	Size
M400-240BLEACHED	2.4m x 30m (Roll)
M420BLEACHED	2.4m x 2.7m (Queen)

Sample - M400 (Bleached)

Care Instructions – To ensure that your batting lasts as long as your project, please take care when washing. The batting is machine washable. It is recommended washing with pH neutral, low phosphate fabric wash. Residual shrinkage is 2.5%

Poly/Cotton



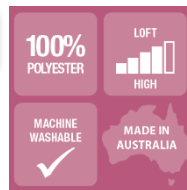
Poly/Cotton

- 80% Cotton, 20% Poly
- Great for those with allergies
- Fully machine washable
- Soft & easy to needle by hand or machine
- Fine scrim to lock in fibres & prevent bearding
- No resin, sprays, glues or bonding
- Residual shrinkage 2.5%

Code	Size
M800-240	2.4m x 30m (Roll)

Sample – M800

Polyester



100% Polyester

- 100% Polyester
- Great for those with allergies
- Unique blend of fibres – great loft & soft
- Fully machine washable
- Soft & easy to needle by hand or machine
- Fine scrim to lock in fibres & prevent bearding
- No resin, sprays, glues or bonding

Code	Size
M500-240	2.4m x 30m (Roll)
M500-150	1.5m x 30m (Roll)
M500-240	2.4m x 30m (Roll)

Sample – M500

Bamboo



Bamboo 100%

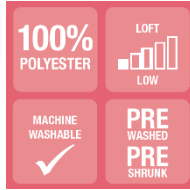
- 100% Bamboo – most eco friendly
- Bamboo has natural antibacterial properties
- Fully machine washable
- Fibre is 100% sustainable & naturally grown
- Double processed to prevent bearding
- No resin, sprays, glues or bonding

Code	Size
M950-240	2.4m x 30m (Roll)
M952	2.4m x 2.75m (Queen Size)

Sample – M950

Care Instructions – To ensure that your batting lasts as long as your project, please take care when washing. The batting is machine washable. It is recommended washing with pH neutral, low phosphate fabric wash. Residual shrinkage is 2.5%

Polyester



Bag Batting

Made In Australia

100% Polyester

- 100% Polyester – Bag Batting
- Pre washed – Pre shrunk
- Fully machine washable
- Its like an interfacing
- Ideal for bags, bowls, placemats etc

Code	Size
M1000	80cm x 30m (Roll)

Sample – M1000

Battilizer



Made In Australia

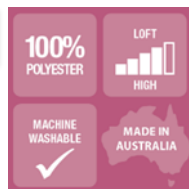
Battilizer (Hoop Sisters)

- Batting & Stabilizer rolled into one
- 60% Cotton, 29% Polyester & 11% Polypropylene
- Perfect for Embroidablock quilt designs
- Made by Matilda's own in Australia
- Fine scrim to lock fibres & bearding

Code	Size
M2000	60cm x 30m (Roll)

Sample – 2000

Polyester



100% Polyester

- 100% Polyester – Jelly roll friendly
- Specially made for 2.5" strip roll projects
- Fully machine washable
- Unique blend of fibres



Jelly Roll Friendly



Code	Size
M4700	5cm x 20m (Roll)

Sample – M4700

Hobbs batting



Hobbs Heirloom collection - with exceptional depth, loft and dimension & gives superior integrity to every quilt. Heirloom® Premium Cotton Blend is made from 80% long staple cotton fibres and 20% fine polyester. The batting is lightly needle punched and treated with a soft resin to provide stability to the fibres and prevent the polyester from bearding.

Cotton/Poly



Normal

Fusible

Made In USA

Cotton/Polyester

- Hobbs Heirloom collection
- 80% Cotton, 20% Polyester
- Exceptional resilience and needles wonderfully
- Lightly needle punched and resin bonded
- Easy to hand quilt or machine
- Made In USA



Code	Size
HLBY96	96" x 30yd (Roll)
HFBY96	96" x 30yd (Roll) (Fusible)

Sample – HLBY96 (Normal)

Sample - HFBY96 (Fusible)

Batting Tape



Batting Tape/Joiner

- No sew fusible batting Joiner
- No need to pin or stitch
- Very handy to join two pieces together
- Doesn't shrink or add bulk with washing
- Fully machine washable
- Tape is soft & slight stretchy
- Can be machine or hand quilted



Code	Size
M4600	4cm x 20m (Roll)

Sample – M4600

Batting tape



HeatPress Batting Tape

- Invented to fuse batting & fabric together
- This can be used on any batting
- Reinforcement/backing on any batting
- Patch for any stretch fabric
- Made In USA



Code	Size
HP-10074W	1.5m x 100yd (Roll) (white)
HP-1574W	1.5" x 15yd (white)
HP-3025W	.25" x 30yd (white)
HP-34W	.75" 30yd (white)
HP-74B	1.5" x 15yd (black)

Sample



Soft & Stable

by **annie.com**
...what's in your bag?



Soft & Stable (White)

- 100% Polyester foam – specially developed
- Polyester fabric on both sides of foam
- Gives lasting body & stability
- Easy to sew – washer & dryer safe
- If wrinkles appear, just iron it with medium heat
- Available in White & Black colour
- Thickness - .175" (4.5mm)
- Tried & tested – best in the market

Code	Size
SS2015-WHITE	58" x 15 yd (Roll) (white)
SS2072-WHITE	58" x 72" (2yd) (white)
SS2036-WHITE	58" x 36" (1yd) (white)
SS2018-WHITE	58" x 18" (1/2yd) (white)

Sample – soft & stable

Soft & Stable

by **annie.com**
...what's in your bag?



Soft & Stable (Black)

- 100% Polyester foam – specially developed
- Polyester fabric on both sides of foam
- Gives lasting body & stability
- Easy to sew – washer & dryer safe
- If wrinkles appear, just iron it with medium heat
- Available in White & Black colour
- Thickness - .175" (4.5mm)
- Tried & tested – best in the market

Code	Size
SS1015-BLACK	58" x 15 yd (Roll) (black)
SS1072-BLACK	58" x 72" (2yd) (black)
SS1036-BLACK	58" x 36" (1yd) (black)
SS1018-BLACK	58" x 18" (1/2 yd) (black)

Sample – soft & stable

Vinyl

by **annie.com**
...what's in your bag?



Vinyl (Transparent)

- Vinyl– specially developed
- Premium weight 16 guage
- Double polished for max clarity & durability
- Easy to sew – easy to clean
- Flexible yet sturdy
- It may be safely machine washed and dried on medium heat. Just be sure to take it out of the dryer promptly and lay it flat to cool.

Code	Size
SUP151-15YD	54" x 15 yd (Roll)
SUP151-16X54	54" x 16" (Prepack)
SUP151L	54" x 1m (Buy per Metre)

Sample – Vinyl

Timtex



Timtex Interfacing

- 100% Polyester – stiff interfacing
- Firm yet flexible
- Easy to cut, mark, sew & steam press
- perfect for shaping into purses, bowls, and other 3-dimensional crafts
- Gives firm stand to Tote bags
- Steam press to restore or set shape
- Machine wash & dry

Code	Size
CT10995	20" x 10yd (Bolt)

Sample – Timtex

Stabilizer



From USA

Acid & Lead Free
Precuts also available



Sulky Stabilizers

- **Soft n Shear** – light weight-textured-non woven, stretch resistance – permanent – cut-away
- **Cut Away Plus** – medium weight – non woven – permanent – cut-away. Excellent for dense designs.
- **Fabri Solvy** – water soluble - temporary - wash-away – non-woven & strong. Use as topper or backing.
- **All available in Precuts as well.**

Code	Size
SULKY-235-25	20" x 25yd (Soft n Shear)
SULKY-275-25	20" x 25yd (Cut-Away Plus)
SULKY-407-25	20" x 25yd (Fabri Solvy)

Sample – Stabilizer

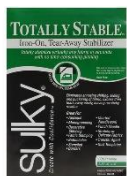


Stabilizer



From USA

Acid & Lead Free
Precuts also available



Sulky Stabilizers

- **Totally Stable** – light weight-iron on-tear away. Eliminates shifting, sliding & puckering
- **Fuse n Stitch** -heavy weight-firm-crisp-iron on-permanent. Suitable for high stitch count. Can be used as permanent interfacing
- **Tear Easy** – light weight-soft -temporary Great stability with effortless removal. Perfect – where wetting or heating is not desired method of removal
- **All available in Precuts as well**

Code	Size
SULKY-661-25	20" x 25yd (Totally Stable)
SULKY-663-25	24" x 25yd (Fuse n Stitch)
SULKY-751-25	20" x 25yd (Tear-Easy)

Sample – Stabilizer



Fusible Web & Batting



Since 1980, The Warm Company has been dedicated to manufacturing exciting and innovative products that make sewing, quilting and crafting throughout the world, easier and more enjoyable. All products are manufactured with only the best materials available to ensure your finished projects meet your high standards.

Steam-A-Seam2

Regular



Normal Weight

Double Fusible

Made In USA



SAS (Regular) - Double Stick Fusible Web

- The #1 most loved brand
- Heat activated pressure sensitive – repositionable
- Will not gum your needle - Machine wash & dry
- Use for – Applique, No-Sew hems & seams, repair zippers – pockets, apply lace, ribbon & many more
- Use with – paper, cardboard, wood, glass, etc

Code	Size
5540	12" x 40yd (Roll)
5518	18" x 25yd (Roll)
5524	24" x 25yd (Roll)
5517	9" x 12" (Sheet) (5x per pk)
5509	1/4" x 40yd (Tape)
5510	1/2" x 20yd (Tape)

Sample – Steam-A-seam2

Steam-A-Seam2

Lite



Light Weight

Double Fusible

Made In USA



SAS (Lite) – Double Stick Fusible Web

- Half the weight of Regular Steam-A-Seam2
- Heat activated pressure sensitive – repositionable
- Will not gum your needle - Machine wash & dry
- Use for – Applique, No-Sew hems & seams, repair zippers – pockets, apply lace, ribbon & many more
- Use with – paper, cardboard, wood, glass, etc

Code	Size
5540	12" x 40yd (Roll)
5518	18" x 25yd (Roll)
5524	24" x 25yd (Roll)
5517	9" x 12" (Sheet) (5x per pk)
5509	1/4" x 40yd (Tape)
5510	1/2" x 20yd (Tape)

Sample – Lite-Steam-A-seam

Insul Bright-Shine



Made In USA



Insul – Bright & Shine

- **Bright** for oven mitts, casserole covers etc
- polyester fibers are needled through a reflective metalized polyester film
- metalized film crinkly sound that is very attractive to babies and animals lending itself to soft books and toys for your pet
- **Shine** is a unique fabric for home insulation projects, crafts, wearables and home décor.
- The shiny metal is pinsonically welded to the insulating polyester

Code	Size
Insul-Bright	
6345F	45" x 1yd (pre pk)
6320	22" x 20yd (Bolt)
Insul-Shine	
6381F	45" x 1yd (pre pk)
6355	45" x 10yd (Bolt)

Sample – Insul Bright - Shine

Fusible Web & batting



Since 1980, The Warm Company has been dedicated to manufacturing exciting and innovative products that make sewing, quilting and crafting throughout the world, easier and more enjoyable. All products are manufactured with only the best materials available to ensure your finished projects meet your high standards.

Warm & Natural



Natural Cotton

Made In USA



Warm & Natural

- 100% Natural cotton fibres – grown in USA
- Needle punched – thin poly scrim securing the fibres together without glue
- Will not shift, Migrate or Beard
- Use in wall hangings, placemats, stockings. Totes, quilted clothes & many more
- Can be used for both batting & exterior fabric to create stuffed snowman & rabbits
- 3% to 5% shrinkage

Code		Size
2322F	Baby	45" x 60"
2391	Twin	72" x 90"
2341	Queen	90" x 108"
2251	King	120" x 124"

Sample – Warm & Natural

Warm 100

Cotton Scrim



100% Cotton

Cotton Scrim

Made In USA



Warm 100

- 100% Cotton needled on 100% Cotton scrim
- Breathable cotton warmth with low loft
- No Prewash necessary < 3% shrinkage
- Zero glues or resin – no chemical smell
- Will not beard – shift or Migrate
- Quilt or Tie – upto 10" apart

Code		Size
2628	Baby	45" x 60"
2323	Twin	72" x 90"
2625	Queen	90" x 108"
2626	King	120" x 124"

Sample – Warm 100

Warm 80/20

Cotton Scrim



Cotton/Poly

Cotton Scrim

Made In USA



Warm 80/20 – Cotton/Poly

- 80% Cotton, 20% polyester – zero glue
- Needle punched into 100% cotton scrim
- Zero glues or resin – no chemical smell
- No Prewash necessary < 3% shrinkage
- Won't distort when hanging or Hooping
- Will not separate or bunch

Code		Size
2656	Baby	45" x 60"
2657	Queen	90" x 108"
2655	Roll	110" x 25yd

Sample – Warm 80/20

BATTING COLLECTION

Wool • Cotton • Polyester • Mix • Bamboo

Batting • Stabilizer • Fusible • Web Interfacing



Australia



Australia



USA



USA



... what's in your bag?

USA



USA



Distributed by
Tiffanies Treasures
Auckland, New Zealand
Ph +64-9-477 0155
email – sales@tiffaniestreasures.co.nz
www.tiffaniestreasures.co.nz