



Hoffman

CALIFORNIA-INTERNATIONAL FABRICS
ESTABLISHED 1924

Spring 2020
PRODUCT CATALOG

TABLE of CONTENTS



4

DREAM BIG ETHEREALITY
by Jeanie Sumrall-Ajero



6

FLORAL RHAPSODY



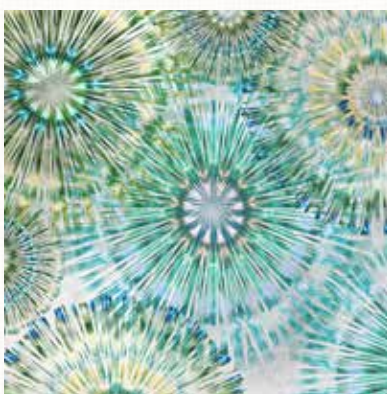
10

FLORAL WONDER



32

CITY DREAMS



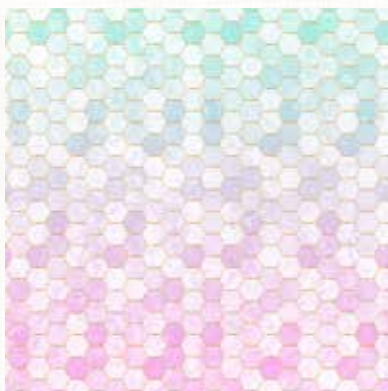
34

BOHEMIAN BLENDS



38

SUN UP TO SUN DOWN



48

BACKSPLASH 2.0



52

MOSAIC MASTERPIECE
by Cheryl Lynch Quilts



56

**NEW 1895
WATERCOLORS**



14

GRACEFUL GARDEN



20

GARDEN STATE OF MIND



24

SPRING SONG



28

SHORELINE STORIES



40

CALL OF THE WILD



42

DINO-MITE



44

CUE THE CONFETTI



46

THE STORYBOOK COLLECTION:
THE PRINCESS AND THE PEA
by Erin Dahl of Chenille-It



62

BALI BATIKS



94

NEW WIDEBACKS

54
HOFFMAN CLUBS

55
PALETTE OF
THE SEASON

90
KITS + PRE-CUTS

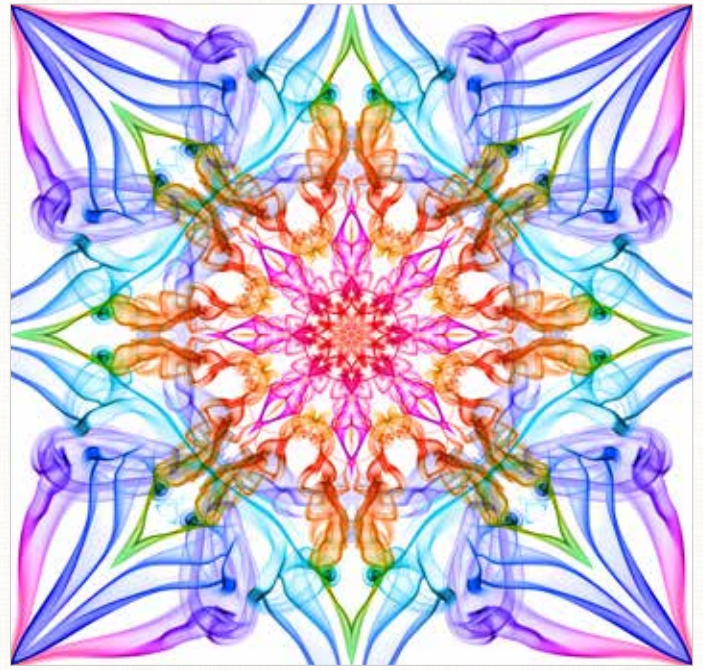
95
SALES REP MAP

DREAM BIG ETHEREALITY

JEANIE SUMRALL-AJERO



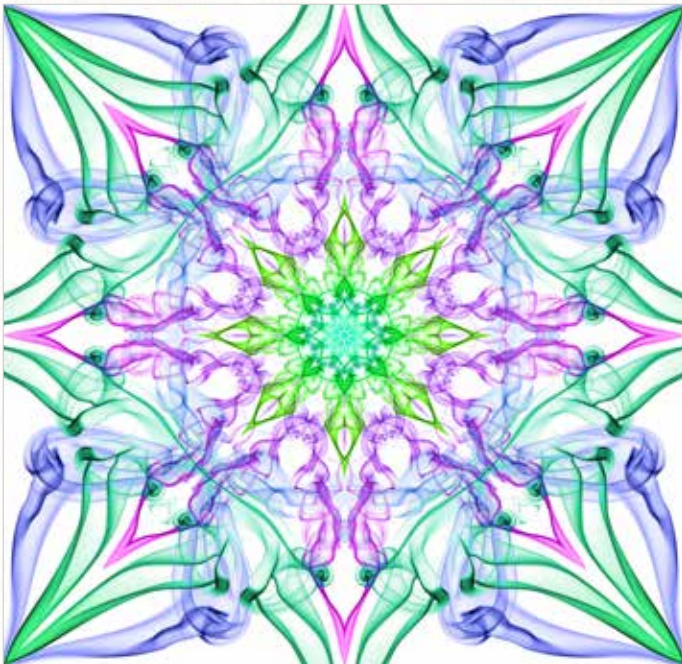
S4796 130-Multi | 20% scale | Complete panel is 43" square consisting of 4 - 21-22" quadrants



S4795 295-Hummingbird | 10% scale | 43" x 43" **S4795** 633-Prism | 10% scale | 43" x 43"



S4794 657-Spectrum | 50% scale



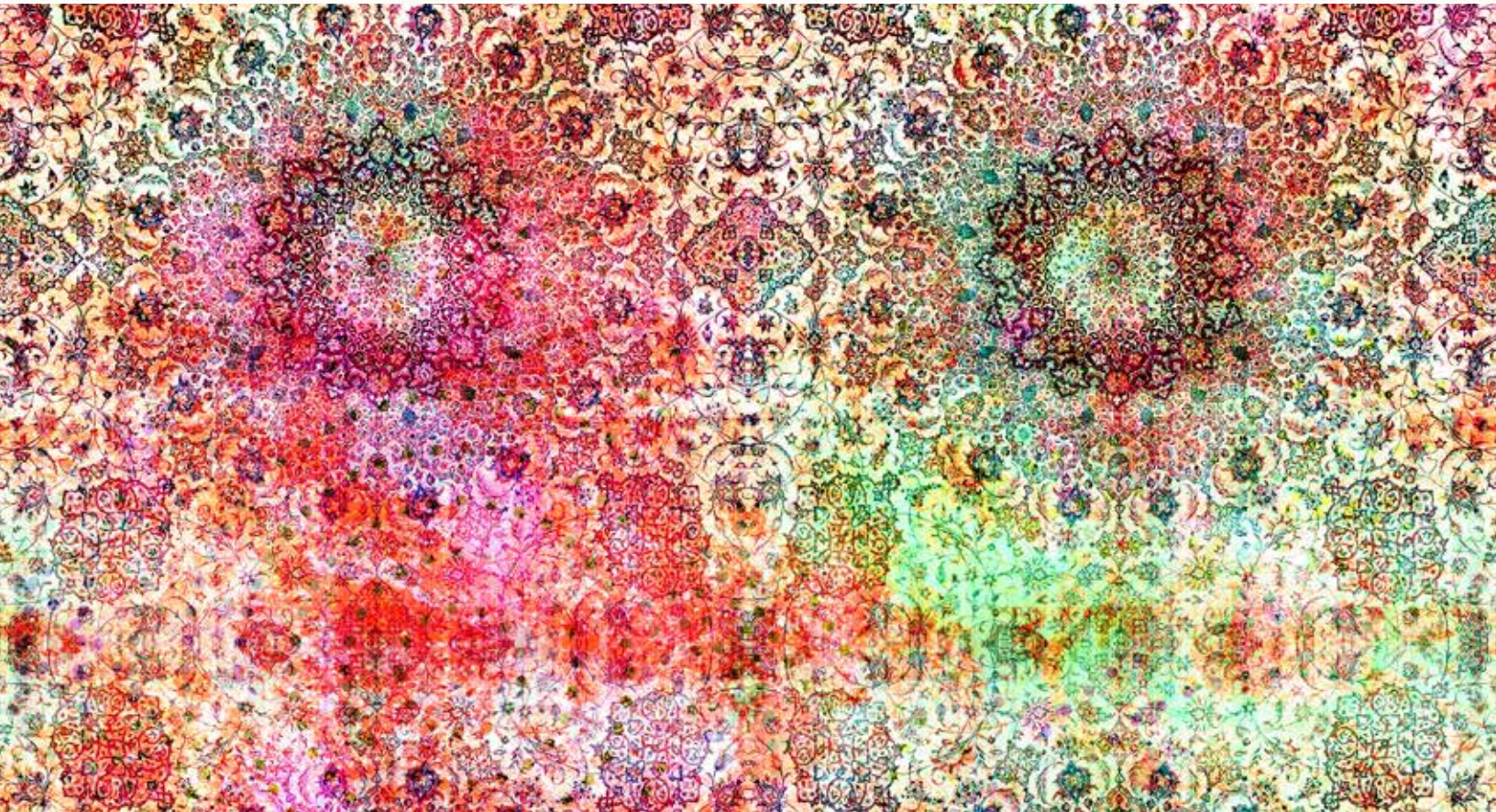
S4795 324-Dragonfly | 10% scale | 43" x 43"



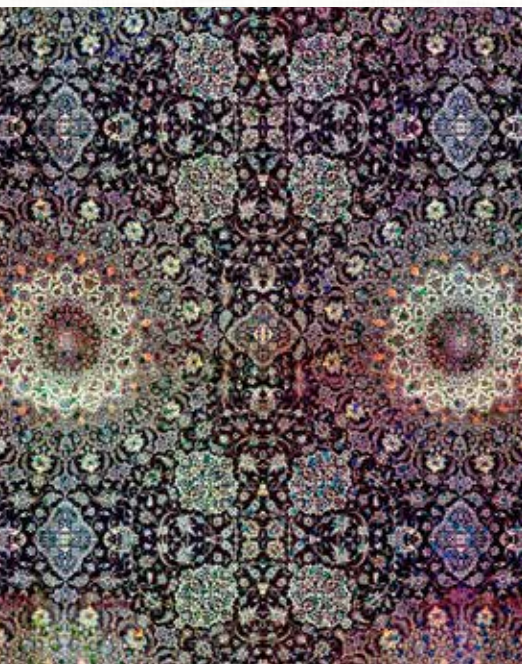
S4795 512-Paradise | 10% scale | 43" x 43"

*each panel is 43" x 43"

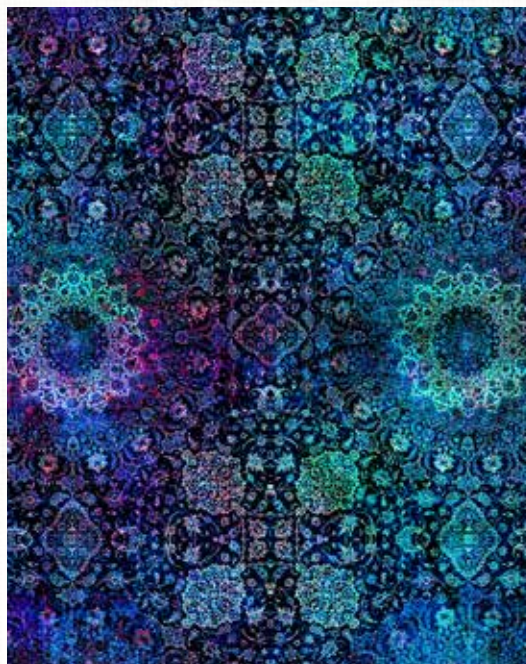
Floral Rhapsody



S4760 479-Tutti Frutti



S4760 50-Wine | 25% scale



S4760 18-Royal | 25% scale



S4760 322-Betta Fish | 25% scale



S4761 405-Wild Berry



S4761 518-Splash



S4761 339-Summer

*swatches shown at 50% scale unless stated otherwise



S4758 581-Bluegrass



S4758 520-Sangria



S4759 667-Light Bright



S4759 474-Punch

*swatches shown at 50% scale unless stated otherwise



Floral Wonder

S4775 33-Cream

10

DIGITALS

*swatch shown at 50% scale



S4773 7-Blue



S4773 31-Emerald



S4773 46-Plum

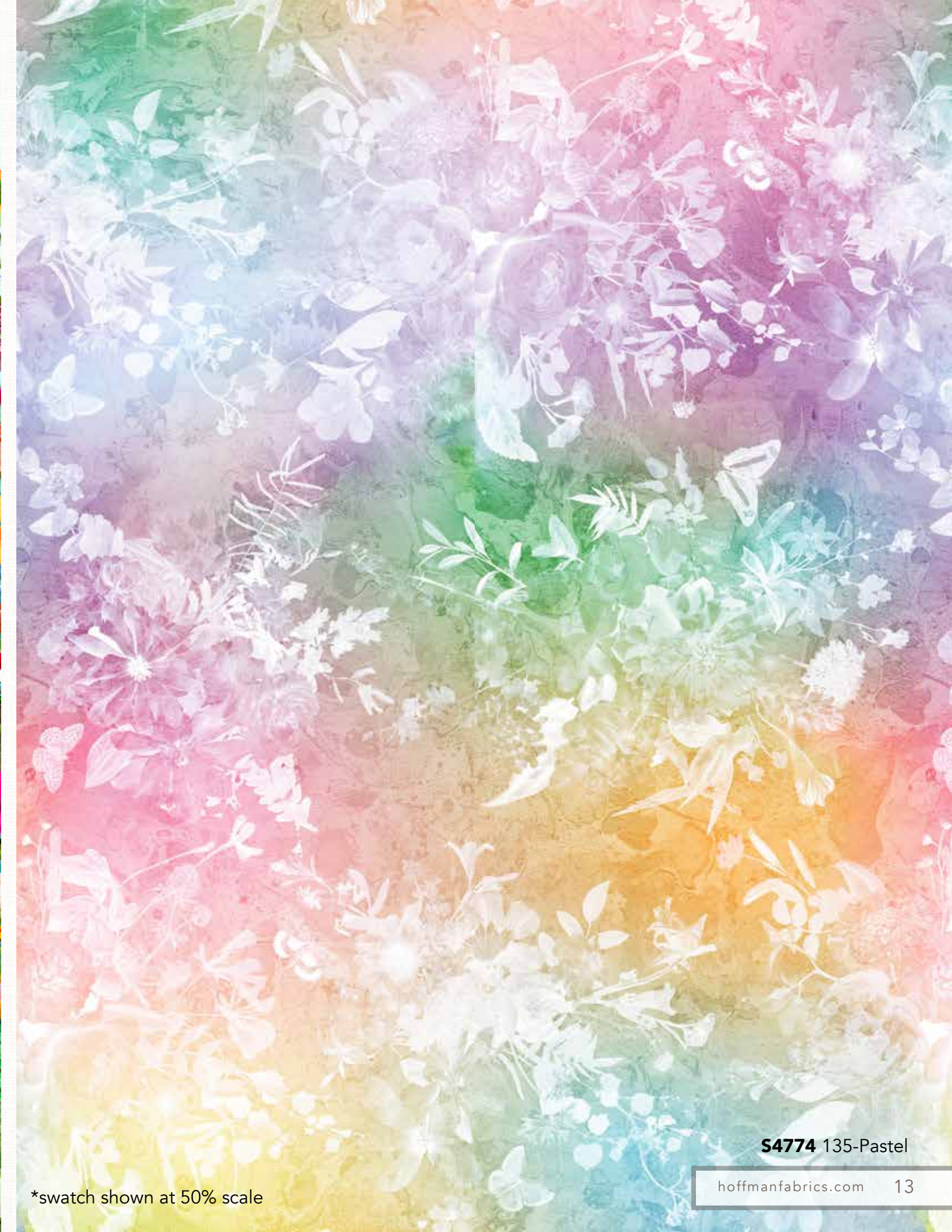
*swatches shown at 50% scale unless stated otherwise



S4772 61-Turquoise

12 DIGITALS

*swatch shown at 25% scale



S4774 135-Pastel

*swatch shown at 50% scale

Graceful Garden

Buy ALL 19 SKUs - Get 10 yard cuts



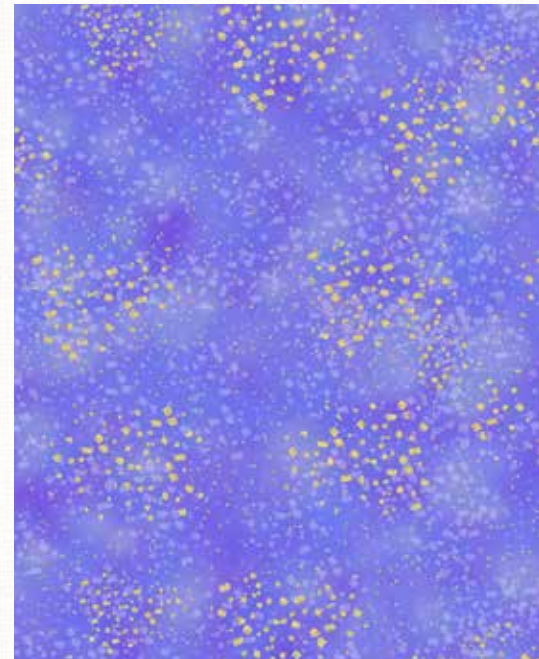
S7730 229G-Wisteria Gold



S7735 14G-Purple Gold



S7734 91G-Amethyst Gold



S7734 229G-Wisteria Gold



S7732 14G-Purple Gold



S7733 23G-Fuchsia Gold

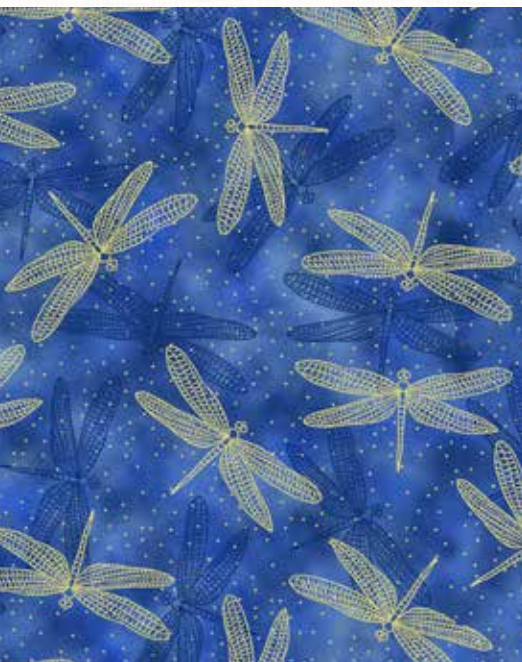


S7731 81G-Violet Gold

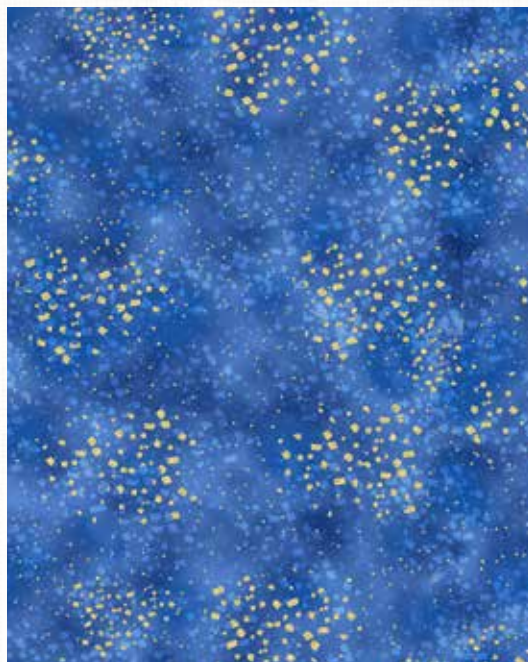
*swatches shown at 50% scale unless stated otherwise



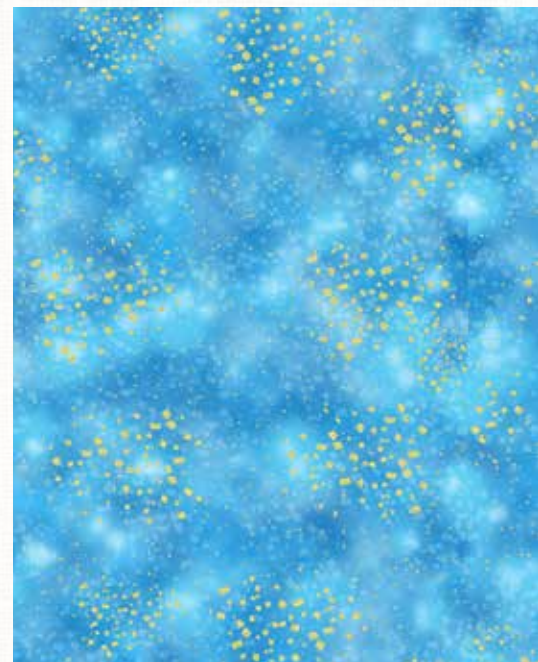
S7730 18G-Royal Gold



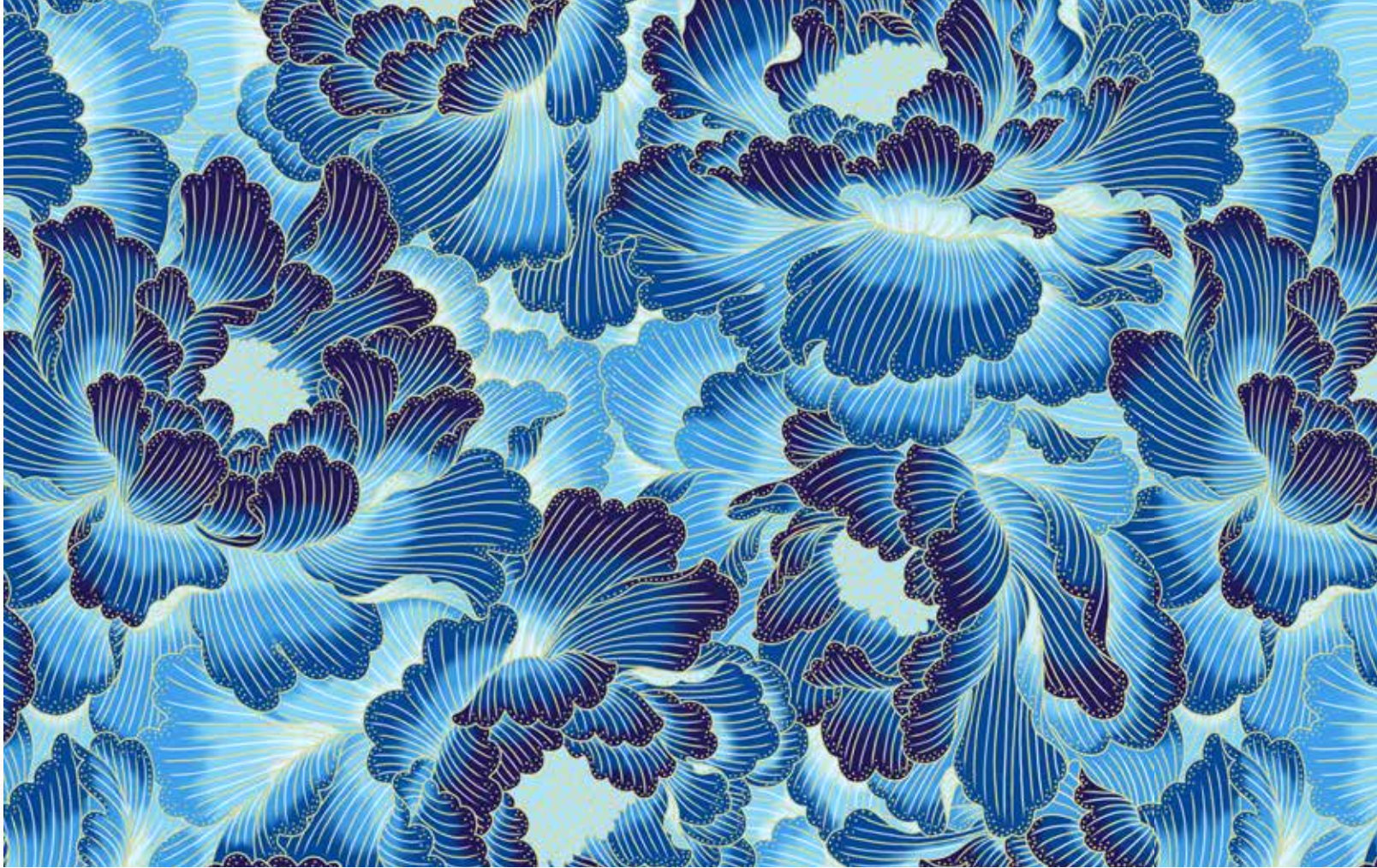
S7735 18G-Royal Gold



S7734 18G-Royal Gold



S7734 258G-Cerulean Gold



S7732 18G-Royal Gold



S7733 139G-Periwinkle Gold



S7731 222G-Hydrangea Gold

*swatches shown at 50% scale unless stated otherwise



S7730 222G-Hydrangea Gold



S7735 3G-White Gold



S7734 3G-White Gold



S7732 531G-Papyrus Gold



S7733 214G-Aquamarine Gold



S7731 445G-Spearmint Gold

*swatches shown at 50% scale unless stated otherwise



GARDEN STATE OF M I N D



S4756 511-Bluff



S4756 580-Cypress



Hoffman 2020 CHALLENGE

Naturally, we want to celebrate with YOU because it is your creativity and loyalty to our brand that allows us to continue to lead the way in textiles. There's no better way to celebrate than joining in on the 32nd Annual Hoffman Challenge. The "GARDEN STATE OF MIND" digital print collection make up the 2020-2021 Hoffman Challenge Collection. We are putting you to the ultimate test this year! For the first time ever, Hoffman Challenge participants are required to use a minimum of 3 out of 6 fabrics from the collection in their artwork entry.

S4755 145-SPRING	S4755 550-BIG SUR
S4756 511-BLUFF	S4756 580-CYPRESS
S4757 170-MEADOW	S4757 580-CYPRESS

Ready to celebrate with us? Here's what you need to know!

As a challenge participant, put your creative and technical skills to the test.

Participant registration, submissions and initial jurying all take place online, with a panel of certified judges considering all entries. Finalists' and award winners' artworks "go on tour" for a year, the exhibitors may include quilt shows and festivals, museums and libraries, cultural centers, guilds and even some Hoffman retailers.

For more details, please visit the Hoffman Fabrics' website at <http://hoffmanfabrics.com/challenge/>

CO-SPONSORED BY





S4757 580-Cypress



S4757 170-Meadow



S4755 550-Big Sur



S4755 145-Spring

*swatches shown at 35% scale unless stated otherwise



Spring Song

S4767 145-Spring

24

DIGITALS

*swatch shown at 75% scale



S4771 135-Pastel



S4770 451-Cornflower



S4770 178-Leaf

*swatches shown at 50% scale unless stated otherwise



S4769 295-Hummingbird



S4769 139-Periwinkle

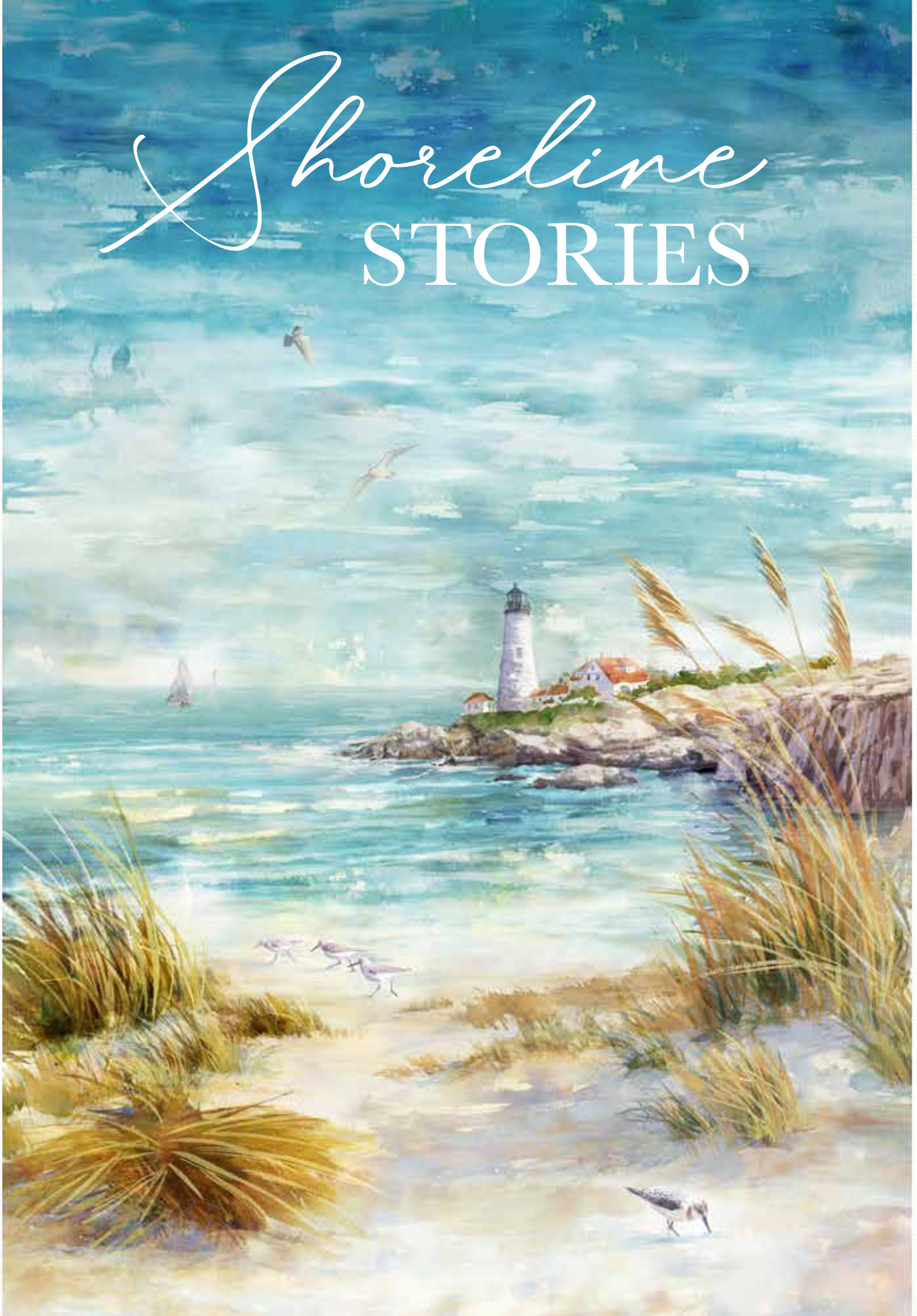


S4768 30-Lilac

*swatch shown at 100% scale

hoffmanfabrics.com 27

Shoreline STORIES



S4798 484-Seaside | 25% scale | 30 ¼" x 44"



S4799 207-Sea Breeze | 35% scale



S4804 521-Mist



S4804 522-Seagrass



S4804 D7-Dusty Blue

*swatches shown at 50% scale unless stated otherwise



S4800 511-Bluff



S4802 294-Sandpiper



S4803 20-Natural | 15% scale
 Full Panel is 66 1/4" x 43 1/2". Each focal piece can be cut into a 20" square perfect for a quilt block or pillow!

Perfect size for the front of a throw pillow



S4801 290-Seahorse

*swatches shown at 50% scale unless stated otherwise



CITY DREAMS

S4786 667-Light Bright

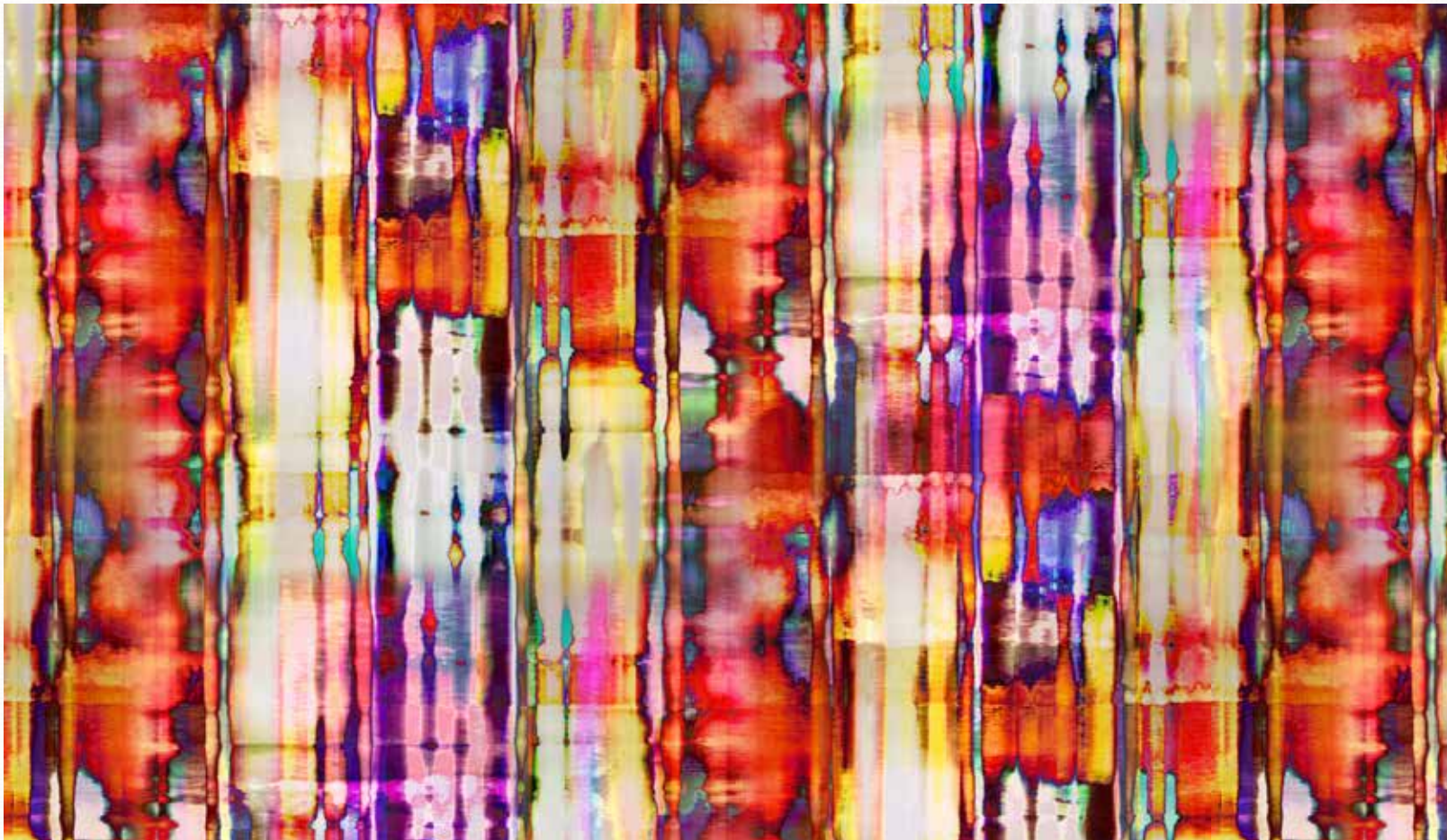
32

DIGITALS

*swatch shown at 25% scale



S4787 667-Light Bright



S4788 615-Flair

*swatches shown at 25% scale unless stated otherwise

BOHEMIAN BLENDS

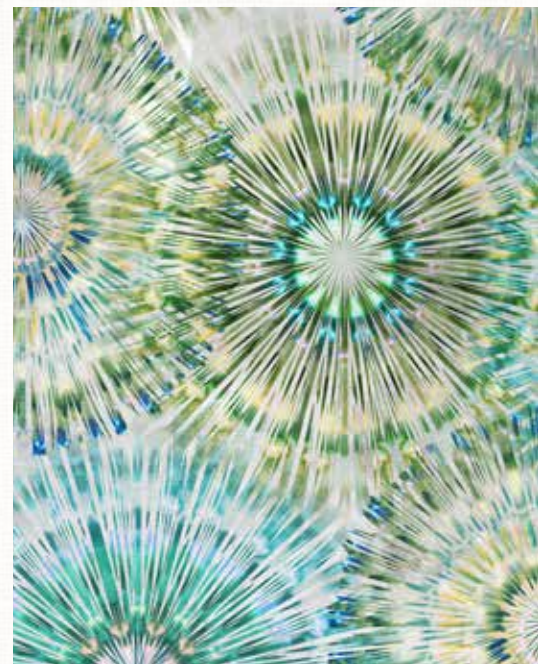
S4754 130-Multi



S4754 267-Palomino



S4754 120-Hyacinth



S4754 234-Peridot



S4781 339-Summer



S4780 431-Cayenne

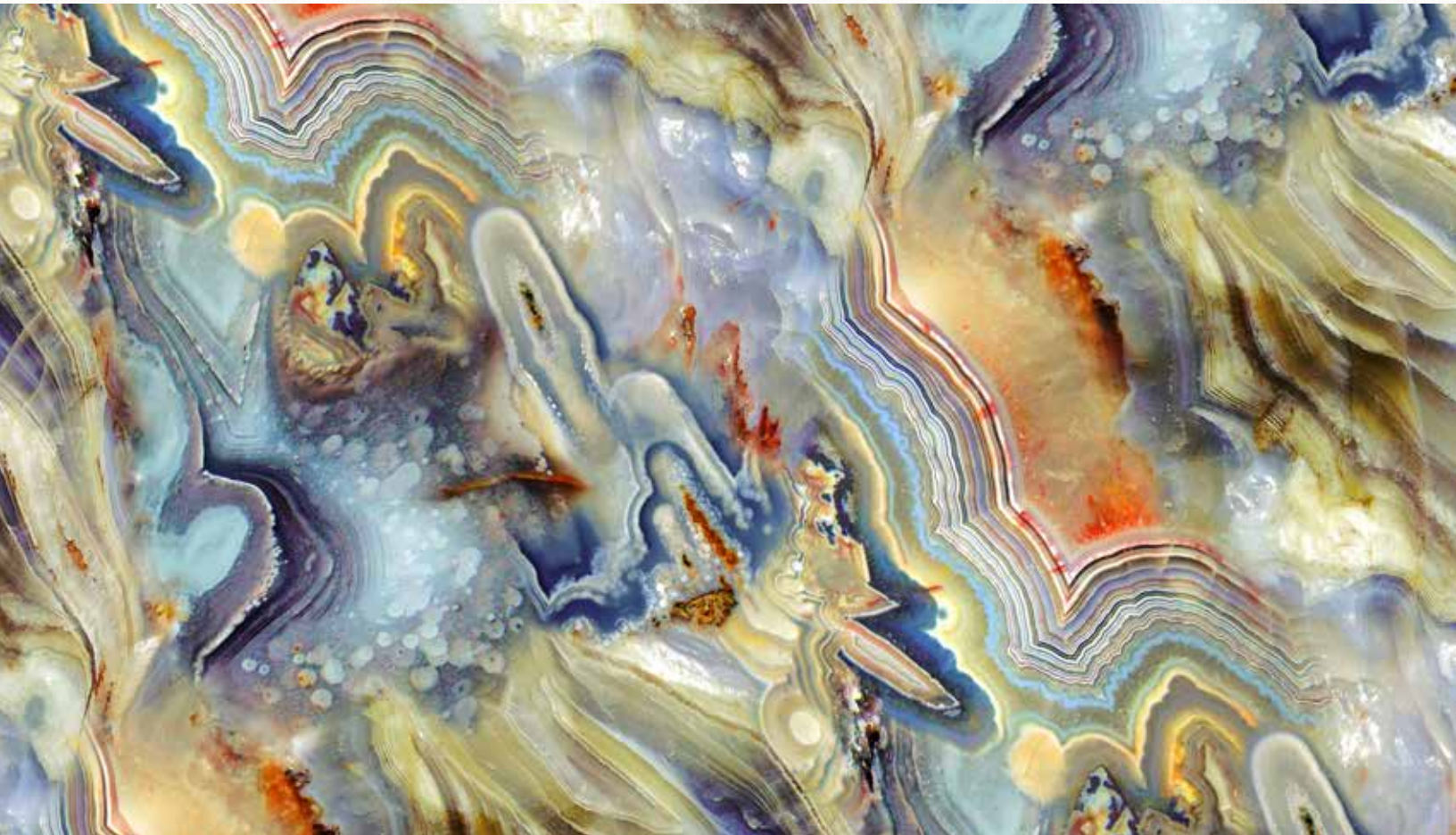


S4780 21-Teal

*swatches shown at 25% scale unless stated otherwise



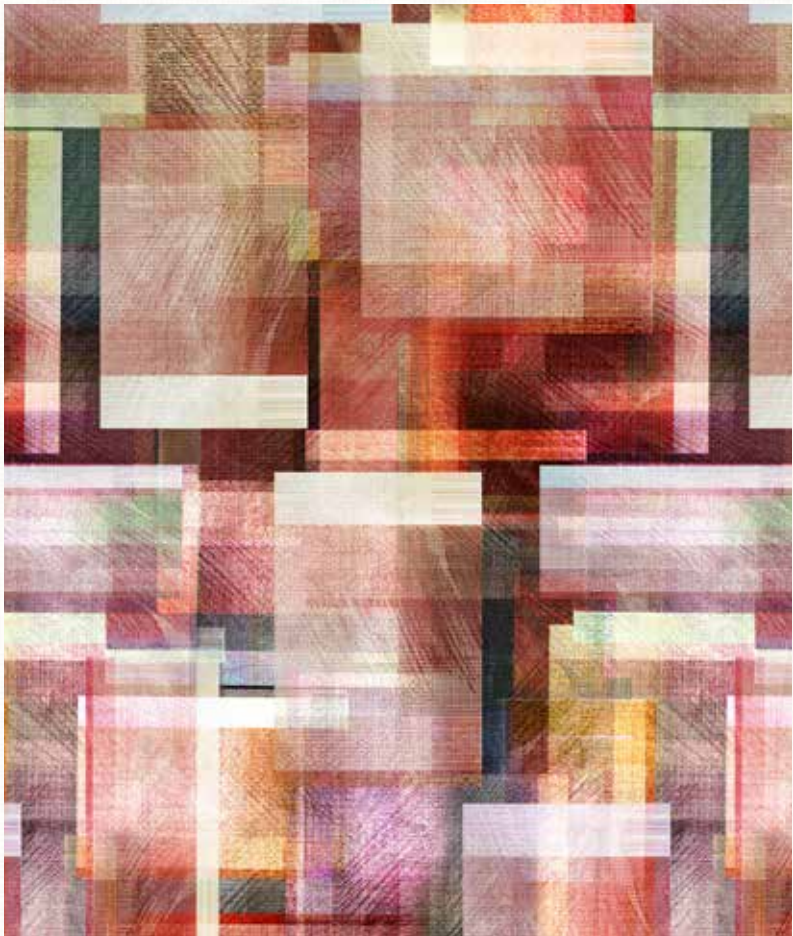
S4785 61-Turquoise



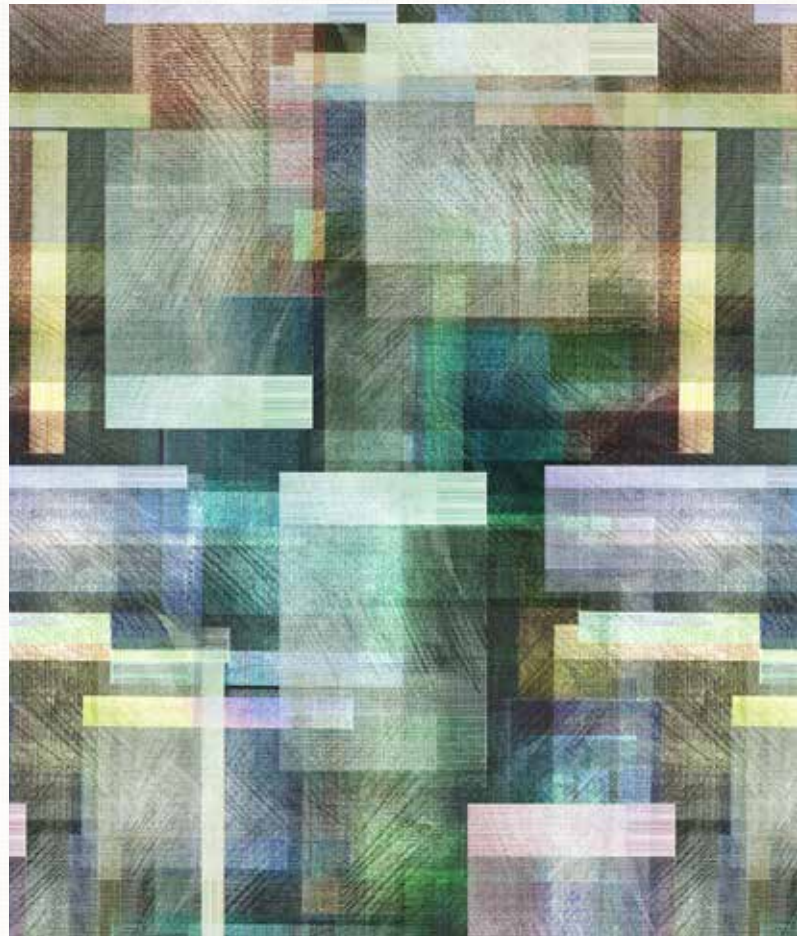
S4784 185-Abalone



S4782 682-Deep Blue | 25% scale



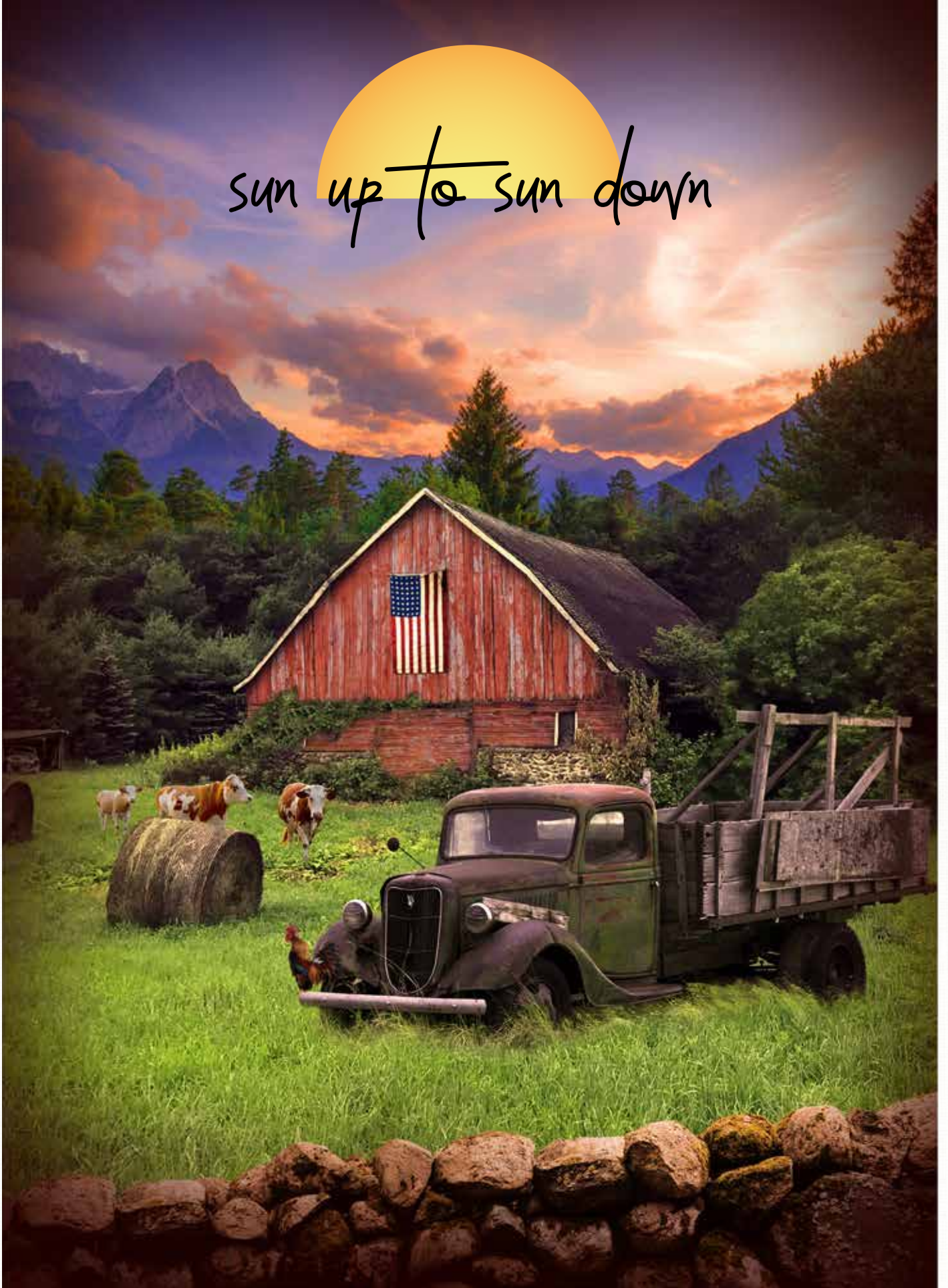
S4783 389-Paprika



S4783 418-Chamomile

*swatches shown at 35% scale unless stated otherwise

sun up to sun down



S4777 112-Dawn | 25% scale | 31 ³/₄" x 43 ³/₄"



S4779 115-Grass | 20% scale | 30 1/2" x 43 3/4"



S4778 39-Rust

*swatches shown at 50% scale unless stated otherwise

Call of the



S4776 272-Mallard | 20% scale | 29" x 43 3/4"



CWBKIT 176-Ice with S4776 272-Mallard



CWBKIT 44-Forest with S4776 272-Mallard

Wild



S4797 623-Umber | 20% scale | 33" x 44"

Pair your favorite Call of the Wild panel or any panel with our **Call of the Wild Border Kits:**

- CWBKIT 131-Oak
- CWBKIT 176-Ice
- CWBKIT 44-Forest



CWBKIT 131-Oak with S4797 623-Umber

DINO-mite



S4763 513-Volcano | Repeat is 51" x 43 1/2".



S4766 48-Gray



S4765 33-Cream

S4764 130-Multi | 25% scale

*swatches shown at 50% scale unless stated otherwise

CUE THE CONFETTI



S4790 130-Multi



S4790 16-Sky



S4790 181-Rainbow



S4789 130-Multi



S4789 181-Rainbow



S4791 130-Multi



S4792 181-Rainbow



S4791 181-Rainbow

*swatches shown at 50% scale unless stated otherwise

The Storybook Collection

The Princess and the Pea



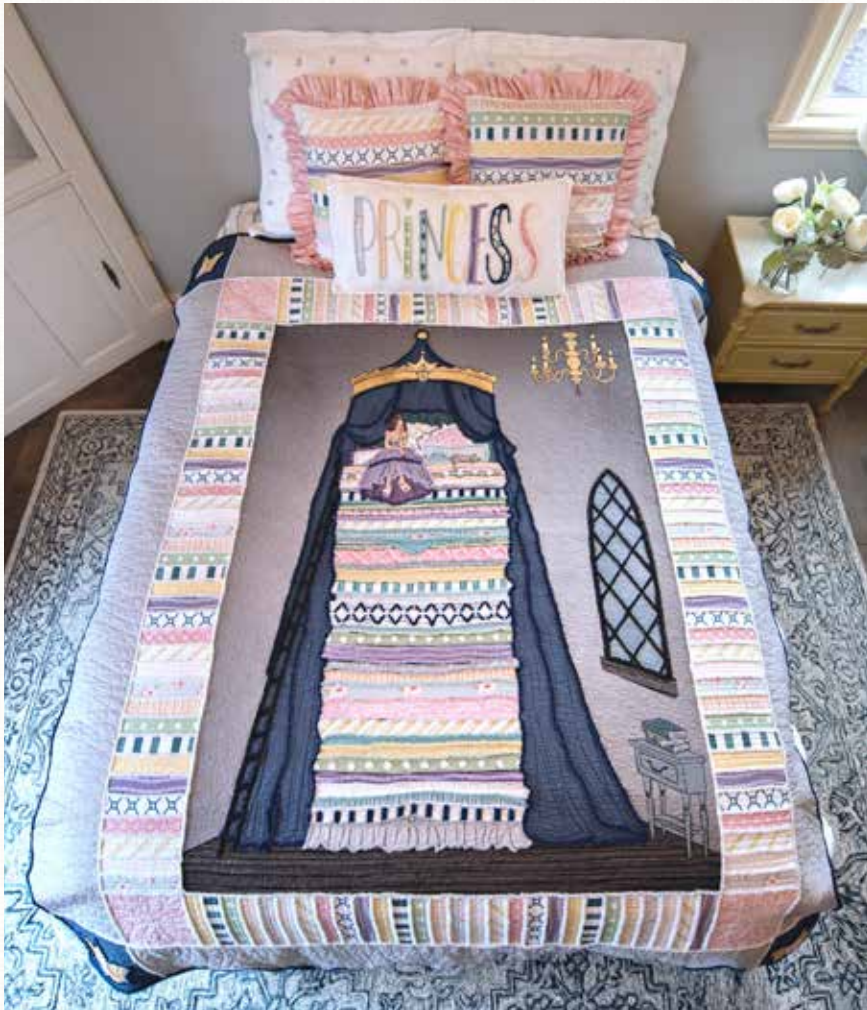
by Erin Dahl of Chenille-It



S4805 576-Petit Four | 15% scale | 43 ¼" x 60"



S4807 12-Pink



Little Princess by Erin Dahl
Purchase pattern at FauxChenille.com

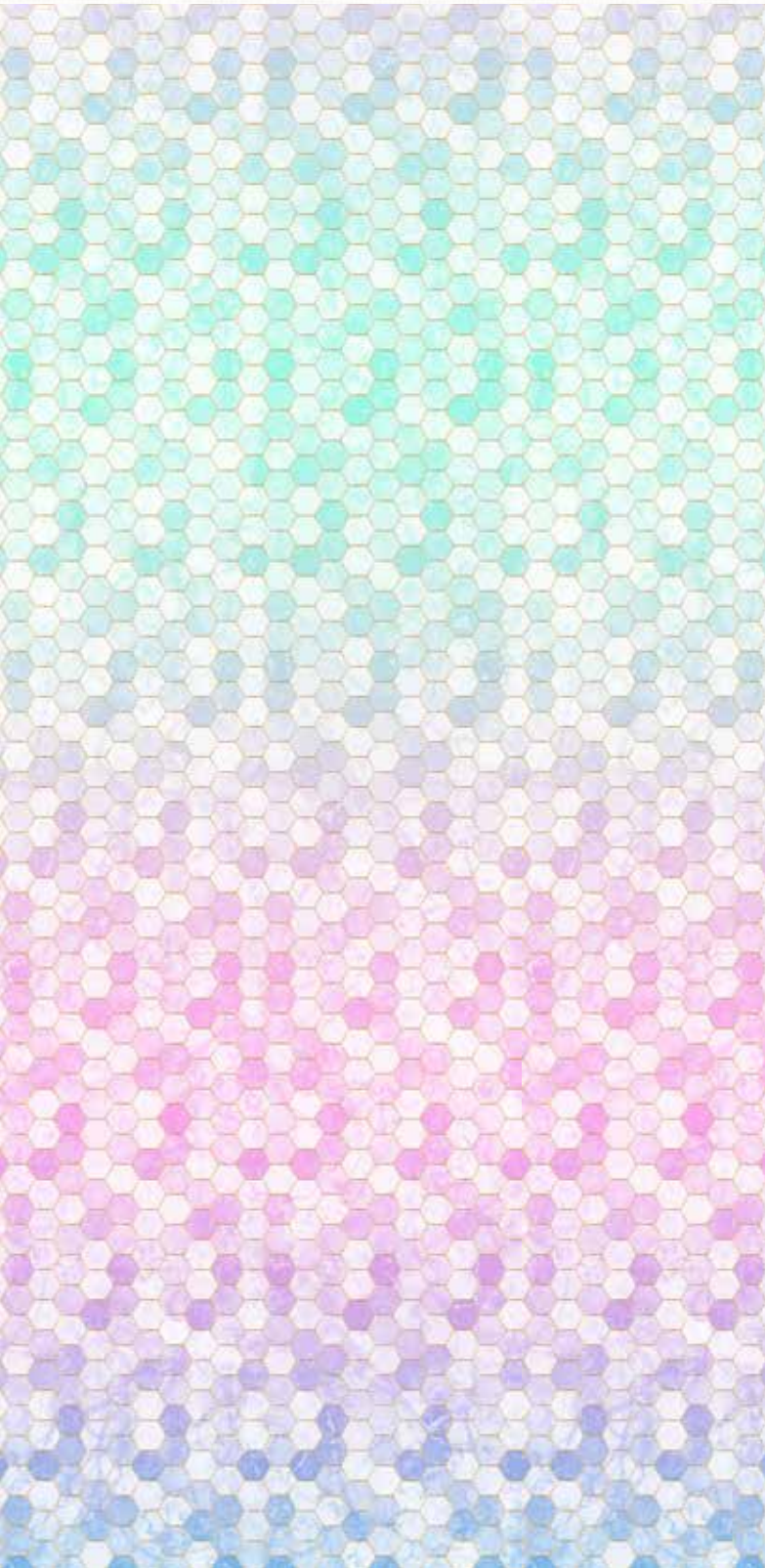


S4806 576-Petit Four

*swatches shown at 50% scale unless stated otherwise

BACKSPLASH 2.0

Buy ALL 15 - Get the FREE HEADER to merchandise



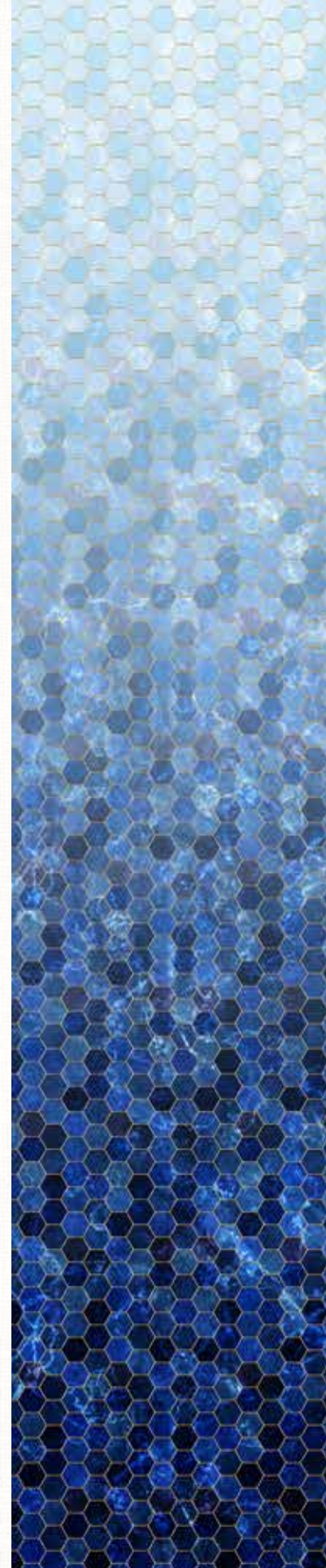
S4762 135-Pastel



S4762 46-Plum



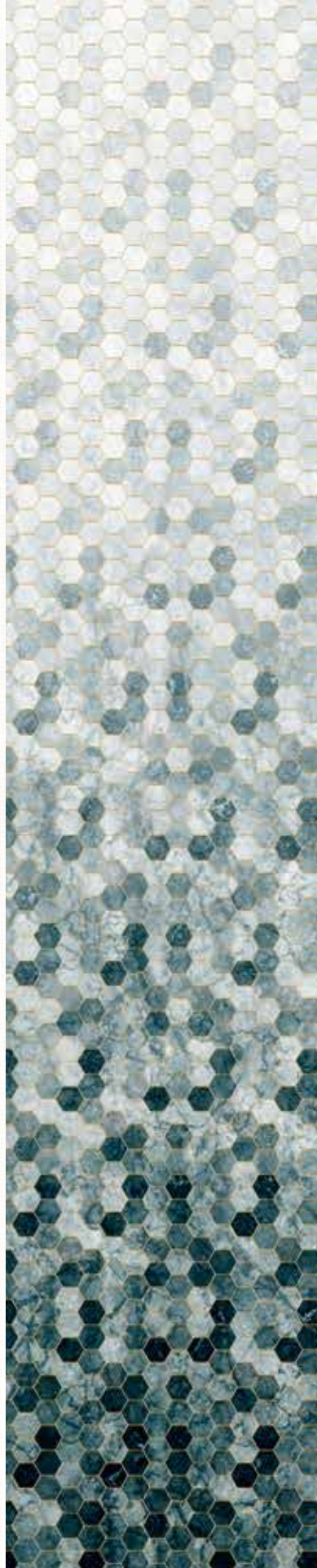
S4762 14-Purple



S4762 7-Blue



S4762 21-Teal

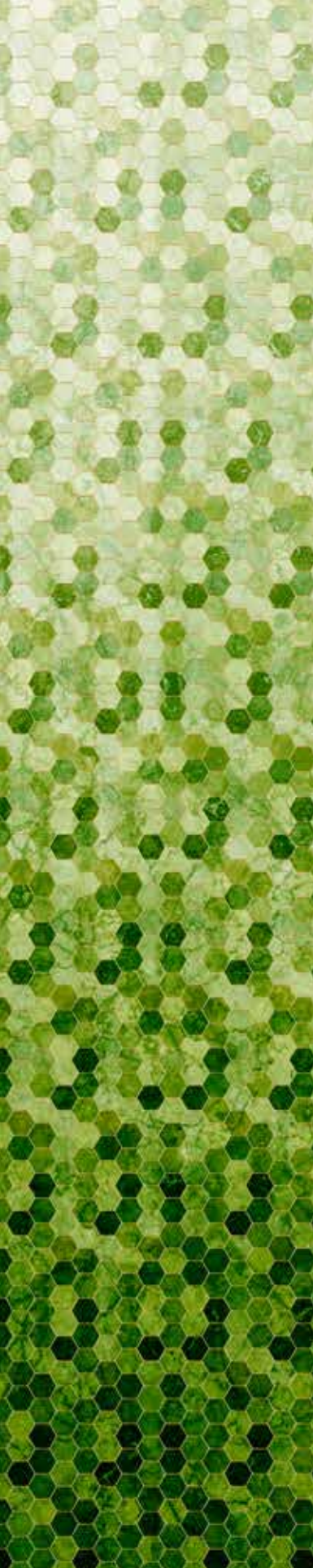


S4762 76-Pewter

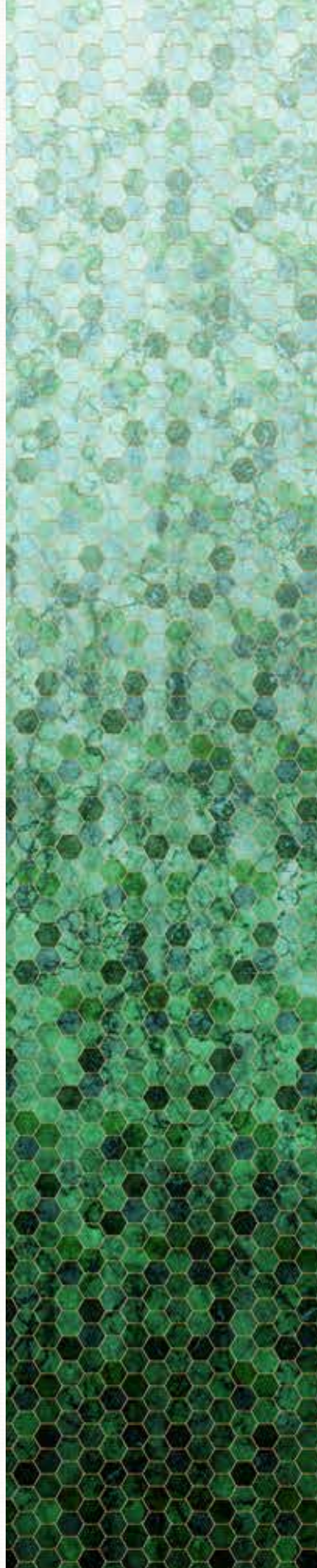


S4762 176-Ice

*each panel is 44" of continuous yardage shown at 25% scale



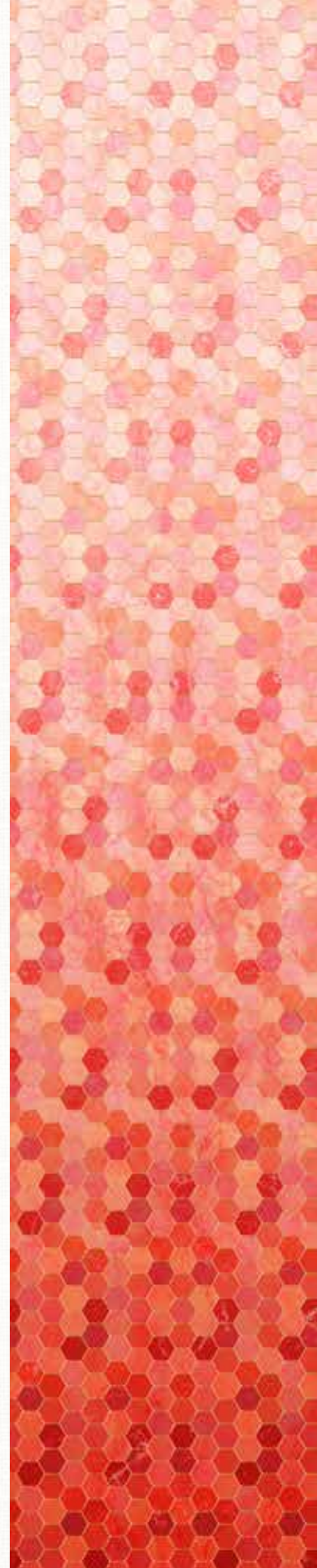
S4762 8-Green



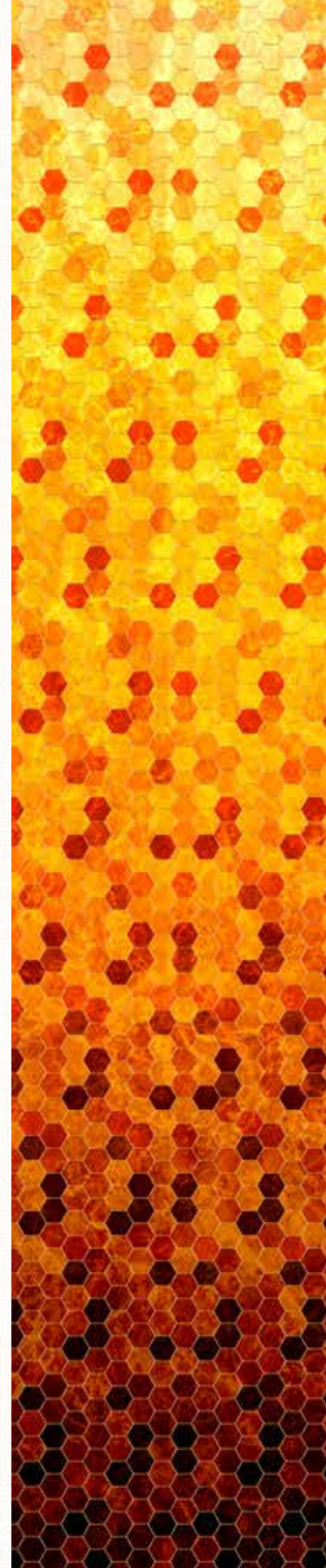
S4762 522-Seagrass



S4762 181-Rainbow



S4762 59-Coral



S4762 118-Honey



S4762 20-Natural



S4762 48-Gray



S4762 584-Granite

*each panel is 44" of continuous yardage shown at 25% scale

MOSAIC MASTERPIECE

by Cheryl Lynch Quilts



S4808 667-Light Bright



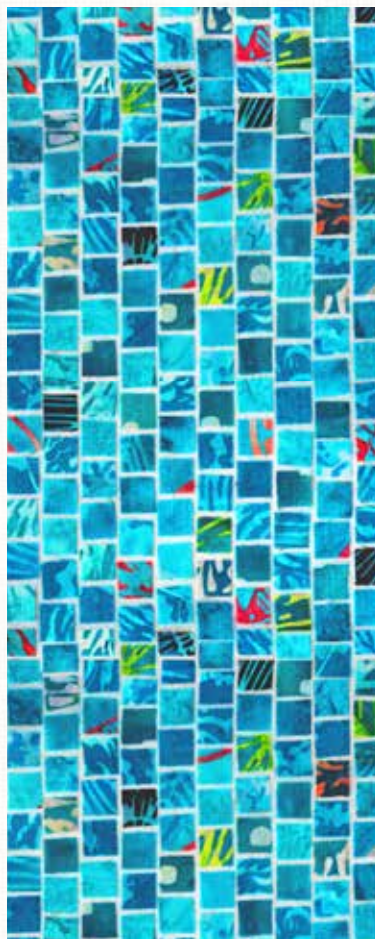
S4808 568-Red Velvet



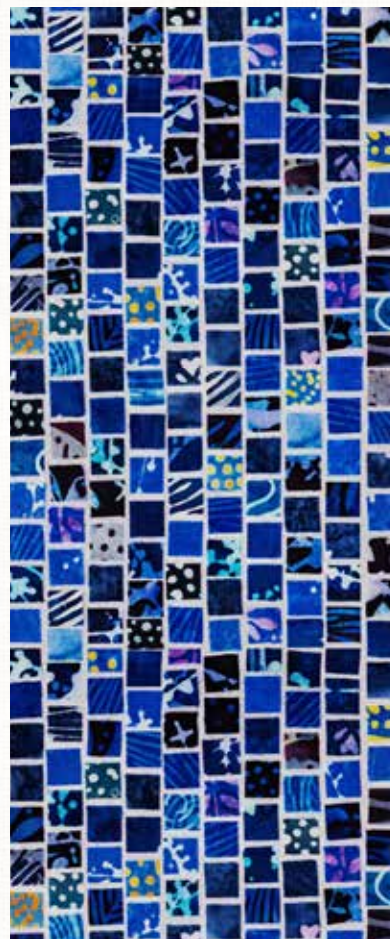
S4808 39-Rust



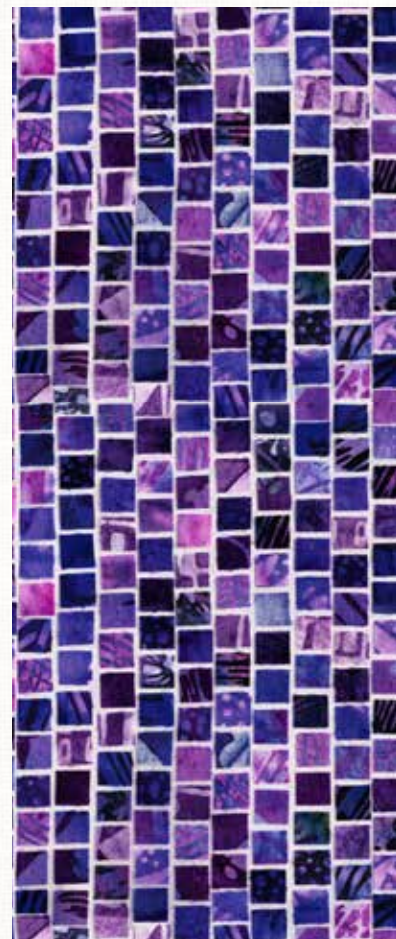
S4808 16-Sky



S4808 41-Aqua



S4808 19-Navy



S4808 91-Amethyst



S4808 624-Gold Ochre



S4808 71-Lime



S4808 60-Hunter



S4808 55-Charcoal



S4808 20-Natural



S4808 33-Cream



S4808 58-Earth



S4808 537-Blacklight

*swatches shown at 50% scale unless stated otherwise

Hoffman 1895 Watercolor Club



"Winter Chill"
1895FQAUTO-586-January



"Sweetheart"
1895FQAUTO-587-February



"Spring Green"
1895FQAUTO-588-March



April - "Fresh Air"
1895FQAUTO-589-April



"Wine Not!"
1895FQAUTO-590-May



"Sweet Summertime"
1895FQAUTO-591-June



"Fireworks"
1895FQAUTO-592-July



"Feeling Hot, Hot, Hot!"
1895FQAUTO-593-August



"Falling For You"
1895FQAUTO-594-September



"Spooky Times"
1895FQAUTO-595-October



"Feeling Thankful"
1895FQAUTO-596-November



"Tis The Season"
1895FQAUTO-597-December



"Frost"
FQAUTO-586-January



"XOXO"
FQAUTO-587-February



"Good Luck"
FQAUTO-588-March



"April Showers"
FQAUTO-589-April



"Mom's Favorite Merlot"
FQAUTO-590-May



"Lemonade Stand"
FQAUTO-591-June



"Independence Day!"
FQAUTO-592-July



"The Heat of Summer"
FQAUTO-593-August



"Leaves are Falling"
FQAUTO-594-September



"Trick or Treat"
FQAUTO-595-October



"Harvest Happenings"
FQAUTO-596-November



"Holiday Delight"
FQAUTO-597-December

Hoffman

CALIFORNIA-INTERNATIONAL FABRICS

PALETTE of the Season


The Goods

WHAT WILL YOU
BE RECEIVING?

- **12 BOLTS OF HOFFMAN BALI WATERCOLORS 1895s** featuring Hoffman's Palette of the Season.
- Access to the **FREE PATTERN** featuring all 12 colors available for download!
DOWNLOAD & PRINT OR MAKE COPIES AS MANY TIMES AS YOU WOULD LIKE!
- **1 FREE SHOP KIT + PATTERN** for **CHECKMATE** that will ship to you one month before the bolts so you can make your store sample just in time for the bolts to hit your shelves!

Delivery

ONE FREE SHOP KIT + FREE PATTERN FOR CHECKMATE

 **AUGUST 2020**

BOLTS + 5 FREE PATTERNS
DOWNLOAD & PRINT OR MAKE COPIES AS
MANY TIMES AS YOU WOULD LIKE!

 **SEPTEMBER 2020**

Featured **FREE** pattern for the
PALETTE of the Season
designed exclusively for Hoffman Fabrics
by **Jean Impey**

Quilt finishes at 62 1/2" x 62 1/2"

There's nothing better than a combination of fun colors, a timeless quilt design and a bold, graphic border! Checkmate masters this recipe for greatness and will surely WOW anyone walks in your store! The 12 rich Hoffman Bali Watercolors are brought to life in an awe-inspiring design by Jean Impey exclusively for Hoffman Fabrics.



Free pattern download available at
www.HoffmanFabrics.com

Bonus

TIMELESS FABRIC!

This store sample never goes out of style since it features the Hoffman Classic, 1895 Bali Watercolors. You can use your sample over and over again to keep selling these gorgeous 1895's!

1895 Watercolor Fat Quarter Bundle



NEW1895FQ 181-Rainbow

Meet the new 1895's!!! Get one Fat Quarter of each of the 31 **NEW** Hoffman Bali Watercolor 1895's. Each bundle contains all 31 colors introduced in Spring 2020 and are ready for your next project.

NEW AND UPDATED

Style 1895 Bali Watercolors Color Card



1895CC-ASST

Quilting's favorite "solid" made on the island of Bali is here to stay with this beautiful and updated color card. Have all **296 colors** of our Hoffman Bali Watercolor 1895's fabrics at your finger tips for your designing, admiring and buying needs!

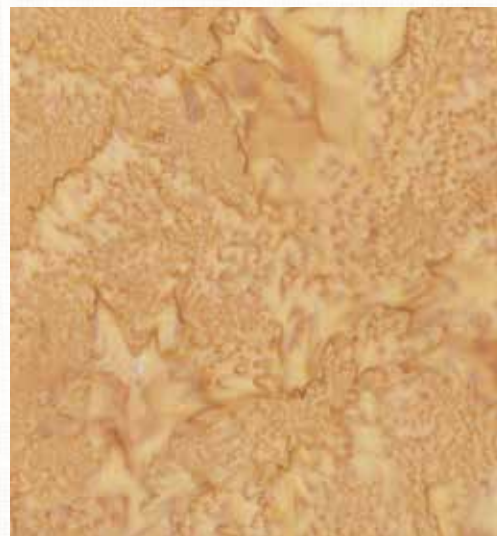
NEW 1895 Watercolors >



1895 265-Oyster



1895 531-Papyrus



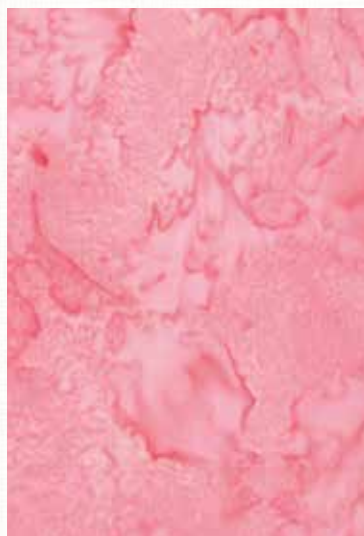
1895 43-Camel



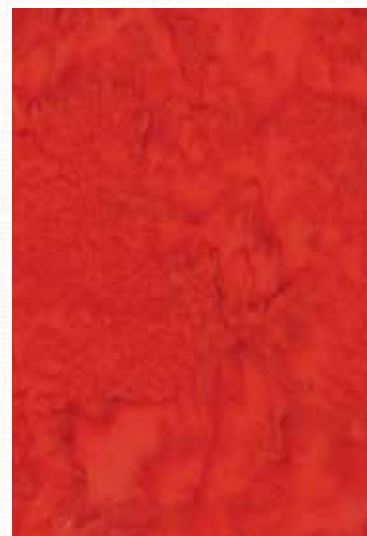
1895 705-Dandelion



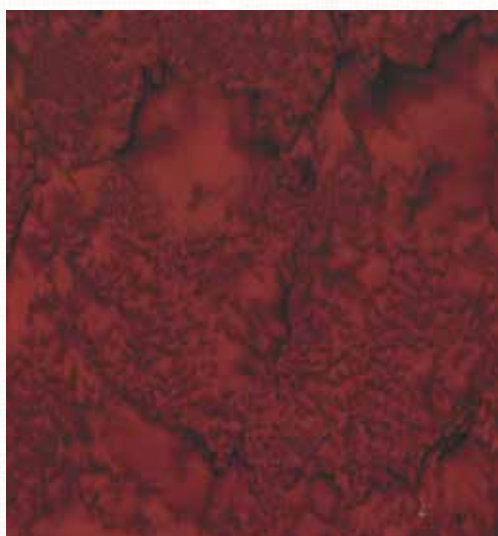
1895 689-Cantaloupe



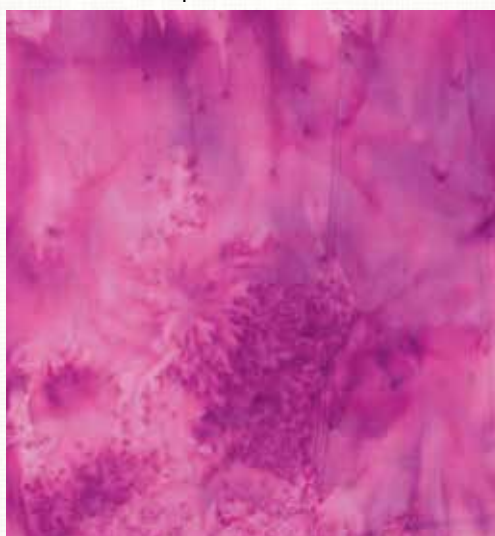
1895 630-Ballet Pink



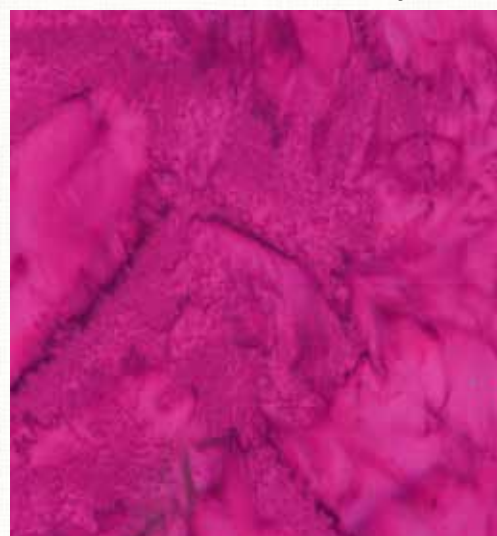
1895 403-Cherry



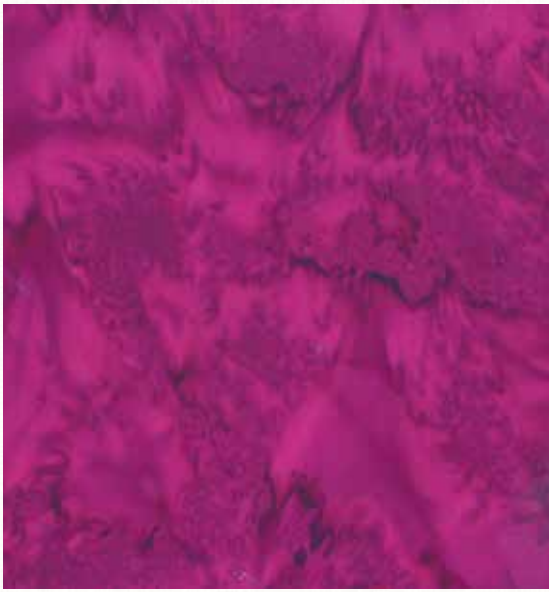
1895 125-Mahogany



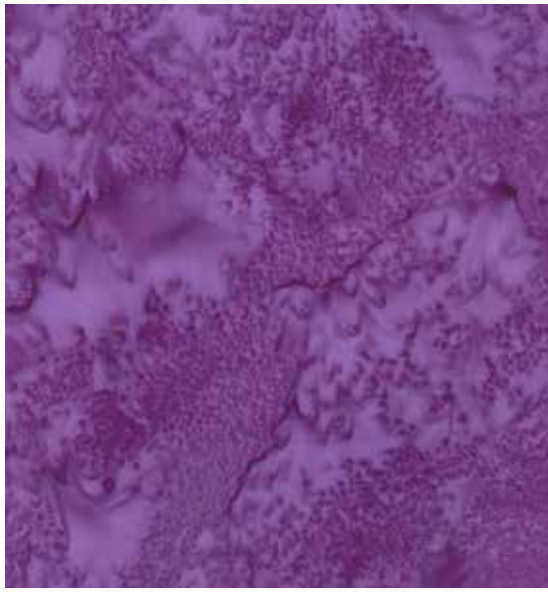
1895 23-Fuchsia



1895 706-Bougainvillea



1895 104-Cabernet



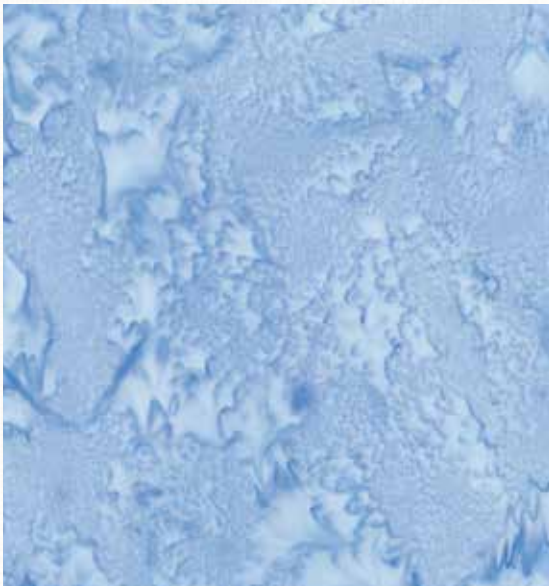
1895 437-Pansy



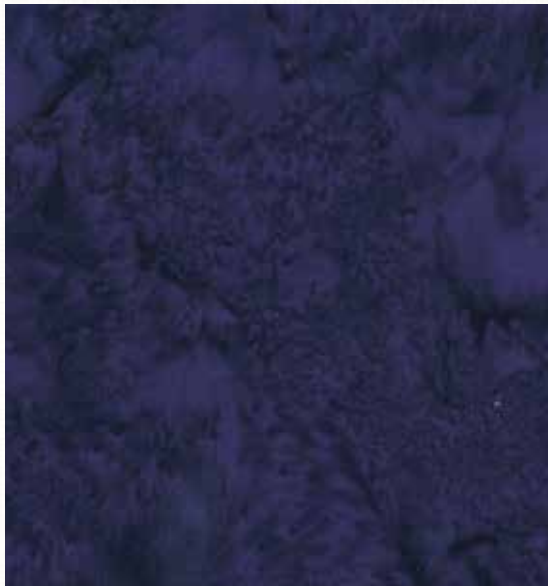
1895 405-Wild Berry



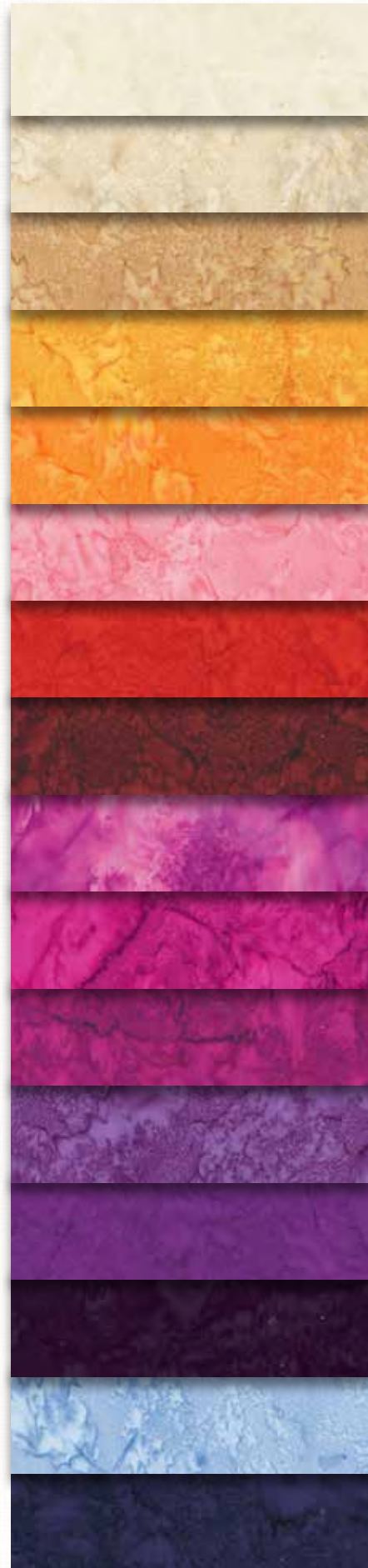
1895 88-Boysenberry



1895 707-Powder Blue



1895 585-Galaxy



(25% scale)

*swatches shown at 50% unless stated otherwise.



1895 708-Baby Blue



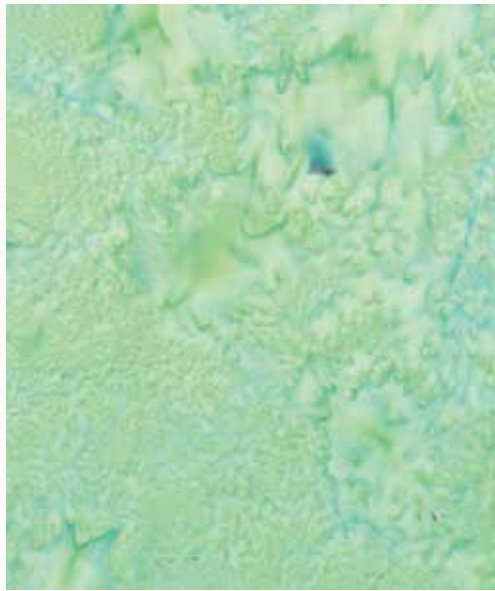
1895 692-Ocean Aquatic



1895 87-Blueberry



1895 709-Aquarium



1895 680-Honeydew



1895 710-Shamrock



1895 31-Emerald



1895 698-Iceberg



1895 622-Cool Gray



1895 313-Payne's Grey



1895 682-Deep Blue



1895 216-Black Jade



1895 711-Deep Fuchsia



1895 197-Black Grape



1895 696-Bear



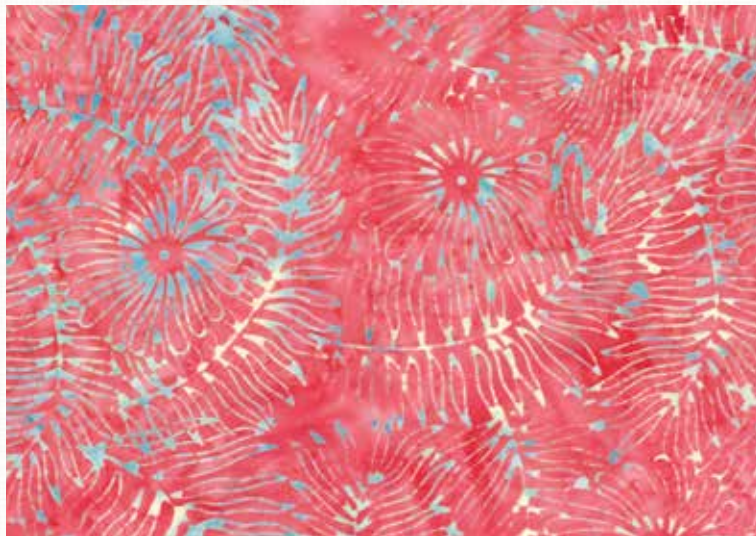
(25% scale)

*swatches shown at 50% unless stated otherwise.

Teeny Bikini



S2330 512-Paradise



S2323 59-Coral



S2326 149-Sun



S2312 469-Nasturtium



S2323 512-Paradise



S2322 13-Orange



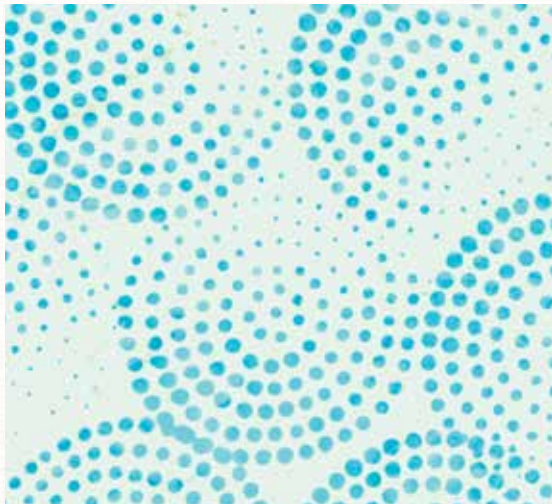
S2313 149-Sun



S2326 151-Sunset



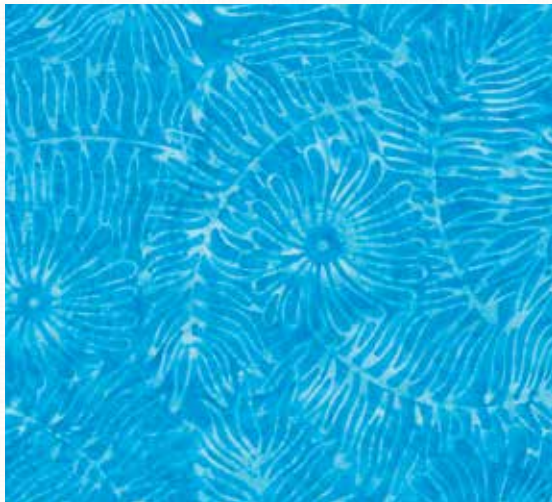
S2319 149-Sun



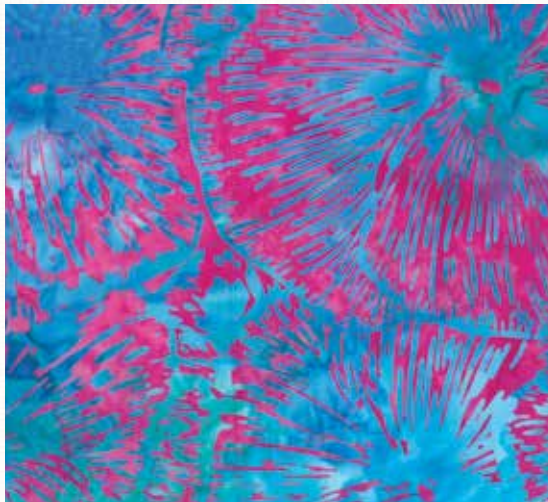
S2326 504-Montego



S2315 151-Sunset



S2323 593-August



S2316 H12-Hot Pink



1895 578-Delta



1895 510-Plumeria



1895 469-Nasturtium



(25% scale)

*swatches shown at 50% unless stated otherwise.

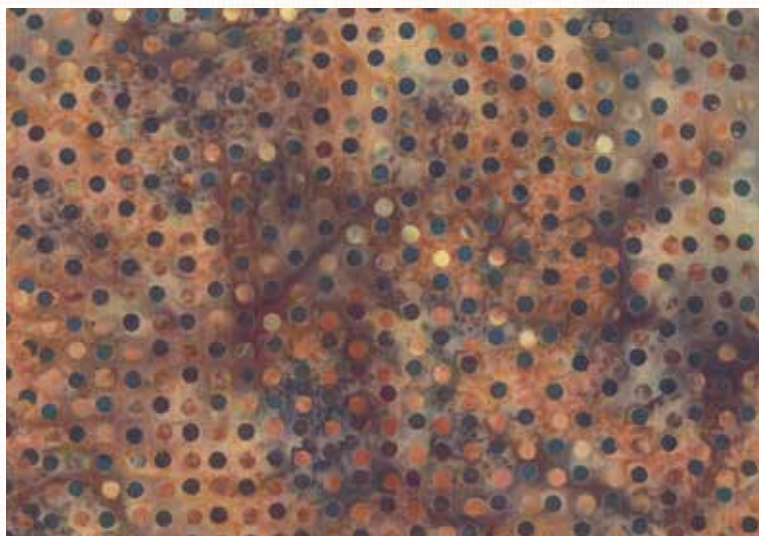
Cider Season



S2312 267-Palomino



S2313 265-Oyster



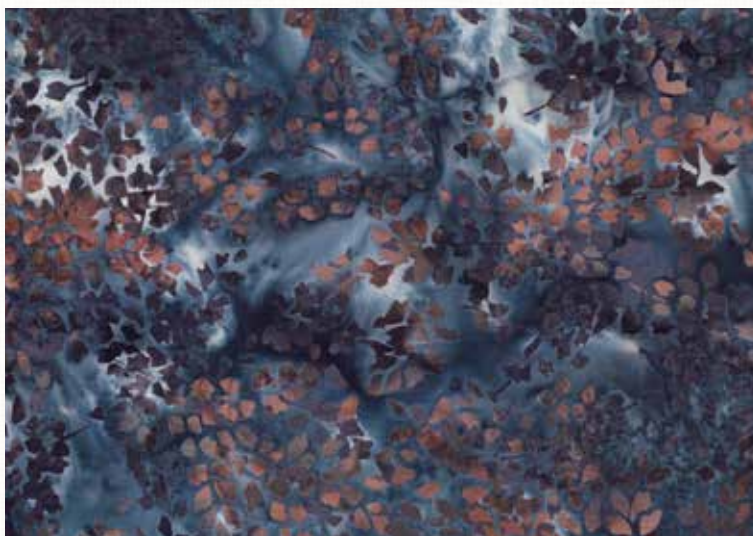
S2322 267-Palomino



S2312 51-Chestnut



S2316 84-Wheat



S2324 372-Saddle



S2317 100-Adobe



S2314 66-Autumn



S2317 431-Cayenne



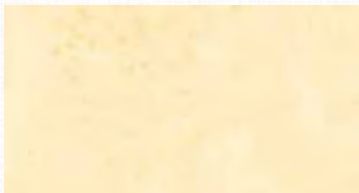
S2320 537-Blacklight



S2324 D21-Dusty Teal



S2314 100-Adobe



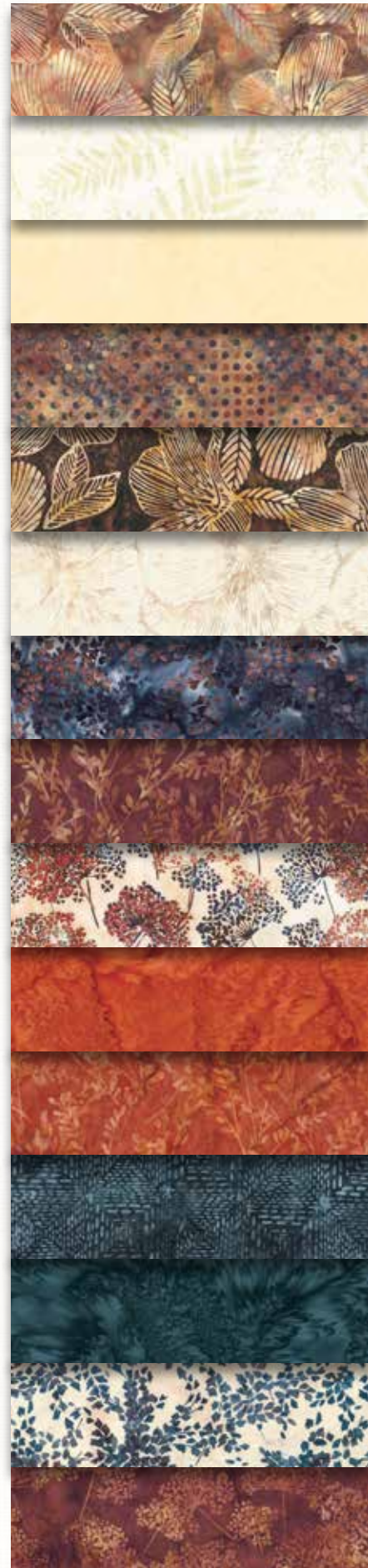
1895 412-Buttercream



1895 431-Cayenne



1895 537-Blacklight



(25% scale)

*swatches shown at 50% unless stated otherwise.

Ladies in Lilac



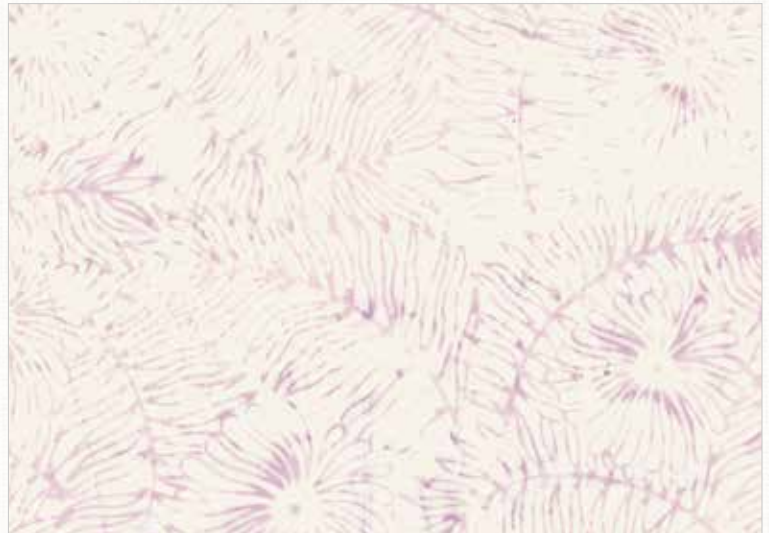
S2313 20-Natural



S2315 20-Natural



S2322 30-Lilac



S2323 352-Lilly



S2323 378-Jelly



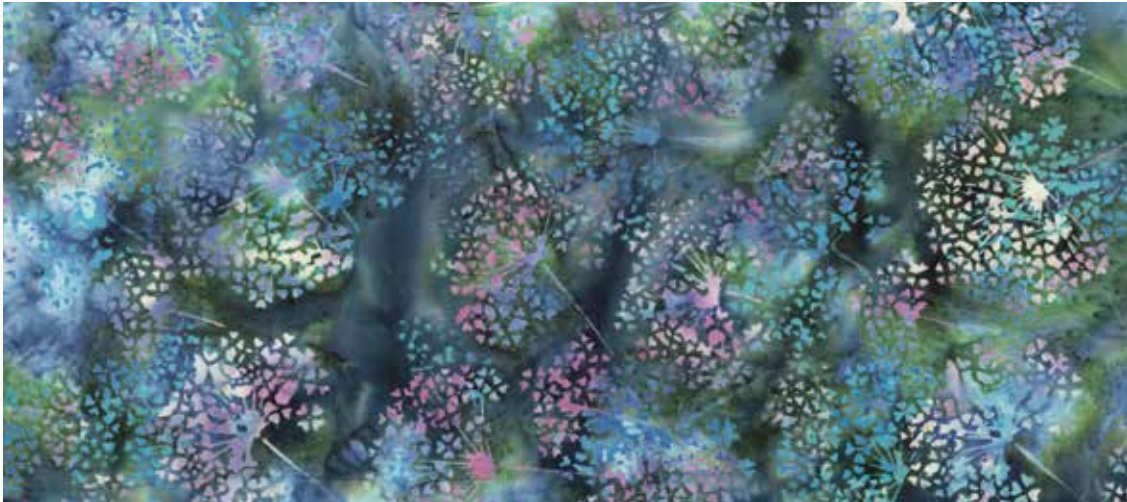
S2324 649-Thistle



S2317 382-Grape Juice



S2319 701-Deep Amethyst



S2314 648-Geode



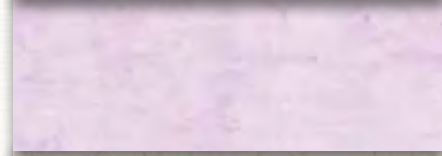
1895 30-Lilac



1895 N45-New Grape



1895 358-Vegas



(25% scale)

*swatches shown at 50% unless stated otherwise.

Lucky in Love



S2316 448-Blossom



S2328 111-Watermelon



S2319 480-Creamsicle



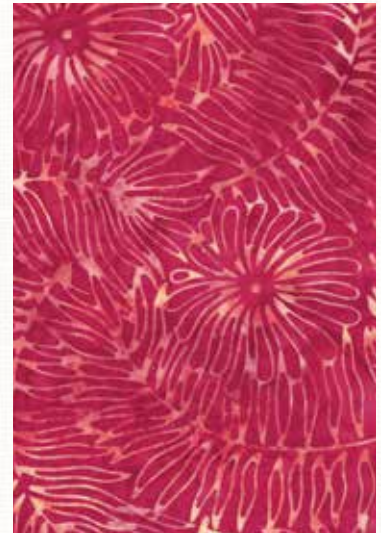
S2314 484-Seaside



S2317 448-Blossom



S2322 480-Creamsicle



S2323 381-Pomegranate



S2324 111-Watermelon



S2323 568-Red Velvet



S2319 702-Deep Emerald



S2317 634-Global Spice



S2328 403-Cherry



S2329 702-Deep Emerald



S2328 634-Global Spice



S2331 568-Red Velvet



S2313 634-Global Spice



1895 480-Creamsicle



1895 381-Pomegranate



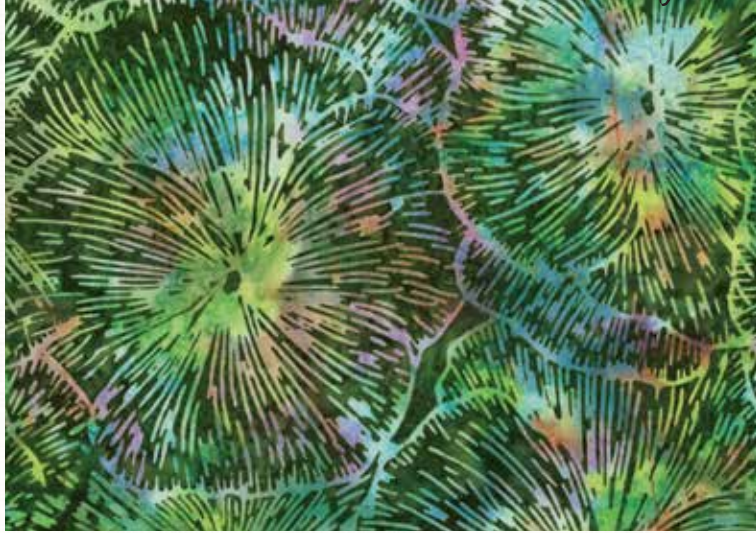
1895 309-Viridian



(25% scale)

*swatches shown at 50% unless stated otherwise.

Garden Gathering



S2316 553-Rainforest



S2326 553-Rainforest



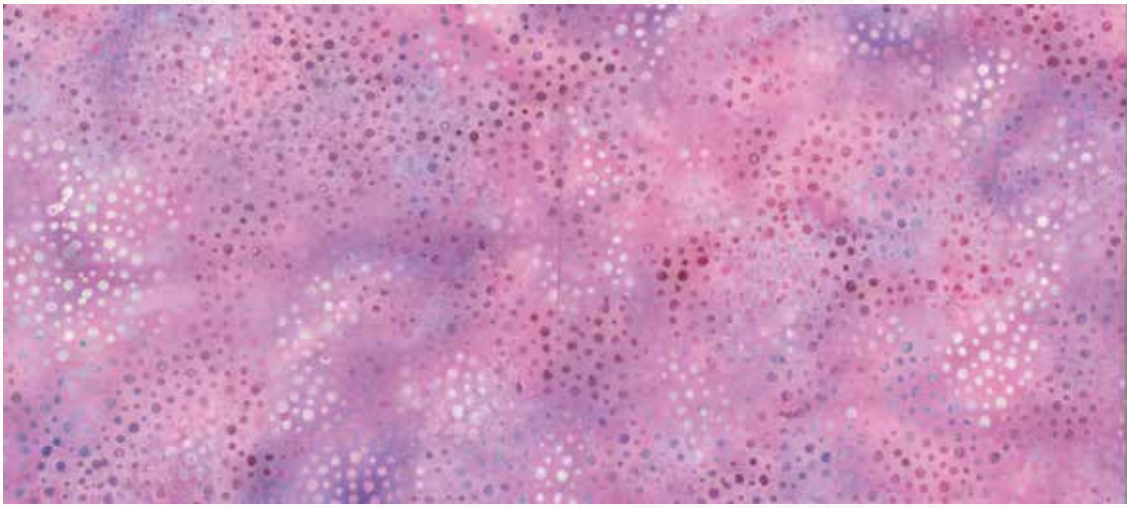
885 132-Opal



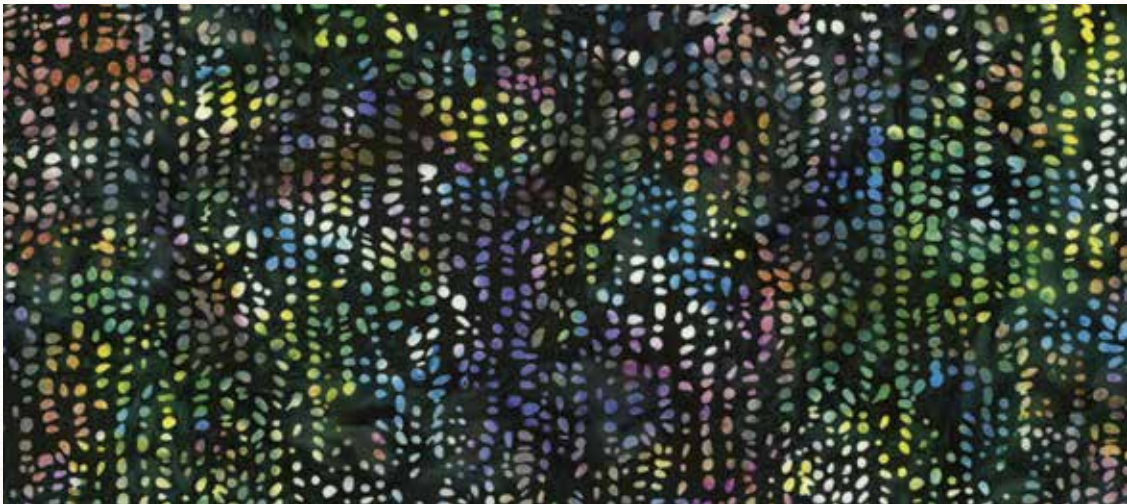
S2313 220-Fern



S2323 553-Rainforest



885 140-Petal



S2328 170-Meadow



S2314 220-Fern



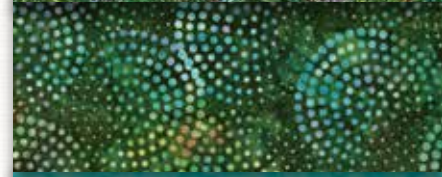
1895 602-Earth Day



1895 178-Leaf



1895 474-Punch



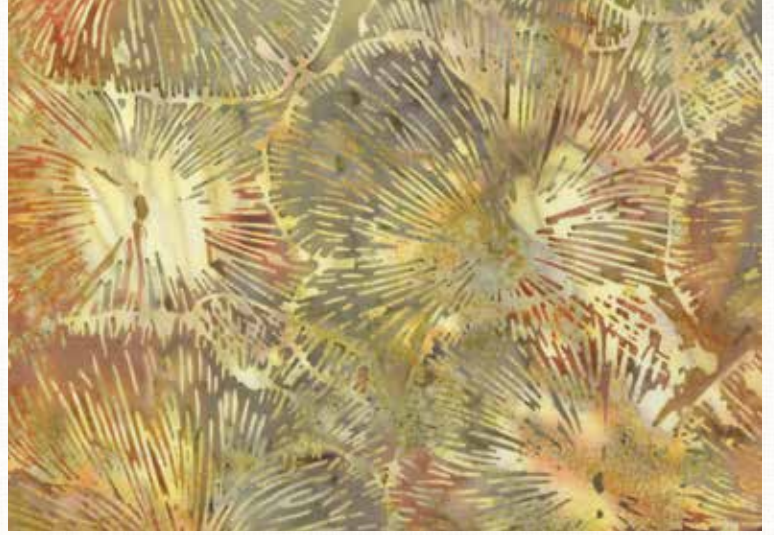
(25% scale)

*swatches shown at 50% unless stated otherwise.

Vino and Vines



S2324 92-Slate



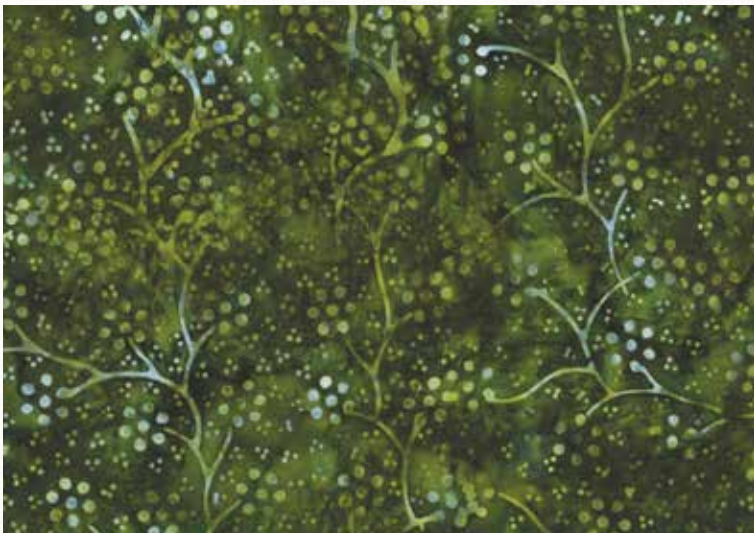
S2316 36-Amber



S2313 58-Earth



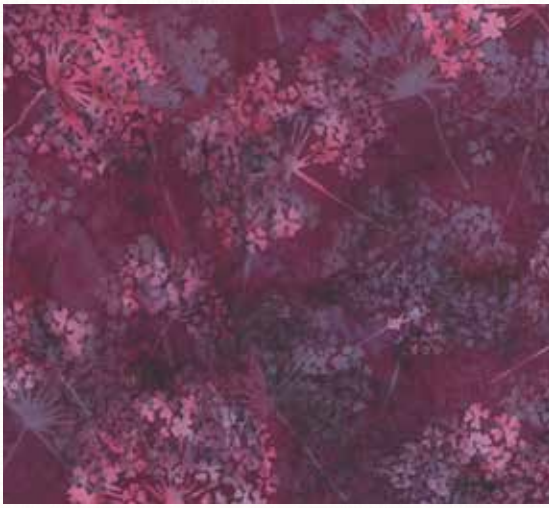
S2313 269-Caterpillar



S2327 365-Tavarua



S2315 58-Earth



S2314 241-Sonoma



S2313 365-Tavarua



S2319 545-Vineyard



S2317 92-Slate



S2313 545-Vineyard



S2317 106-Celery



1895 105-Celadon



1895 365-Tavarua



1895 241-Sonoma



(25% scale)

*swatches shown at 50% unless stated otherwise.

Chasing Waterfalls



S2315 667-Light Bright



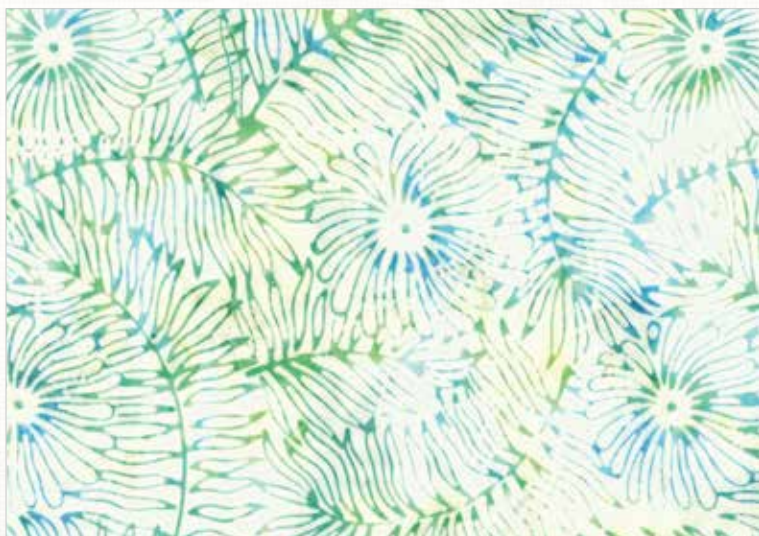
S2322 667-Light Bright



S2332 370-Acapulco



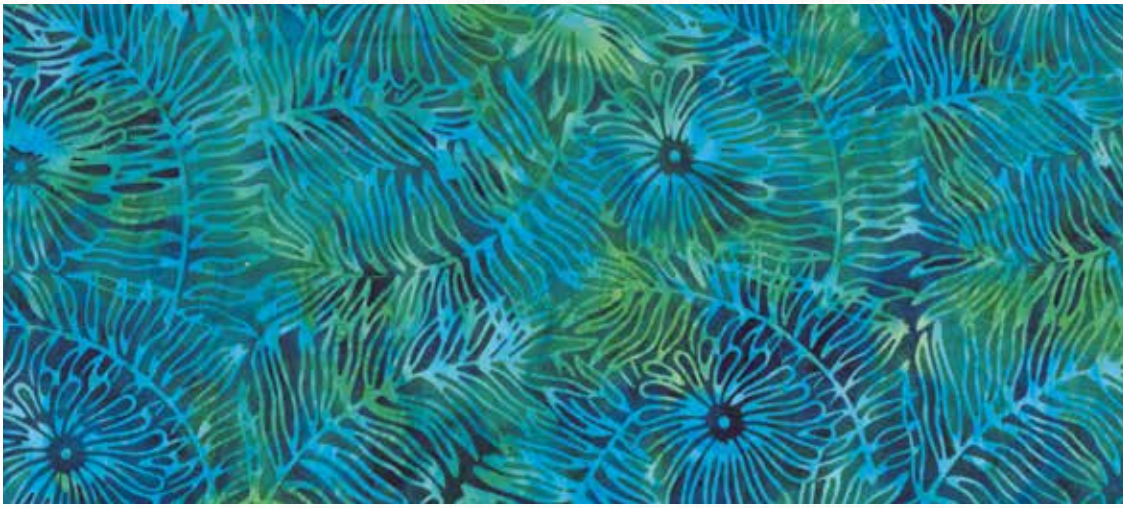
S2319 178-Leaf



S2323 73-Ocean



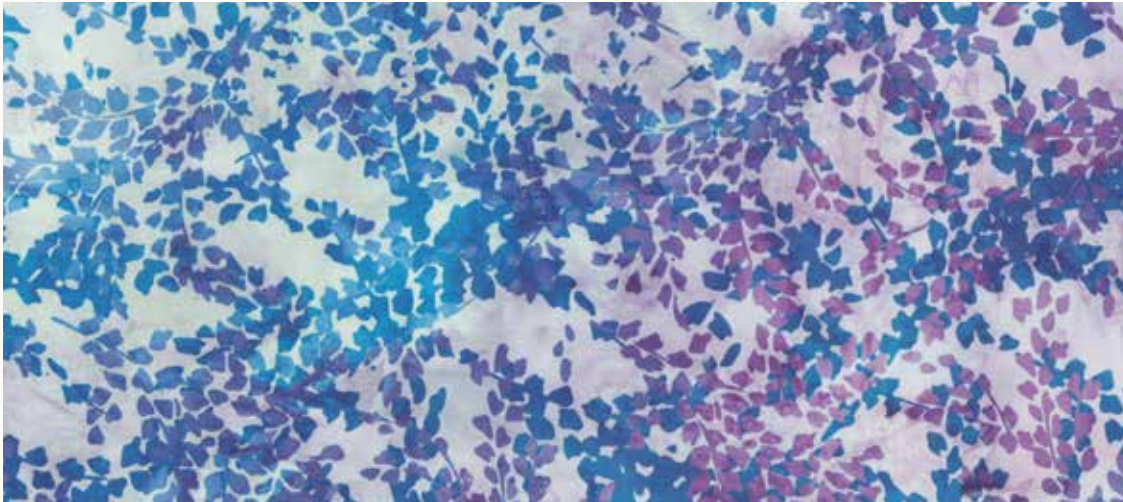
S2319 145-Spring



S2323 312-Atlantic



S2328 312-Atlantic



S2324 585-Galaxy



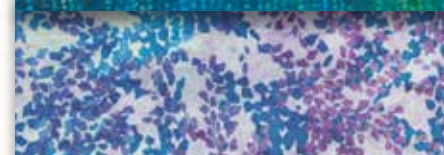
1895 370-Acapulco



1895 322-Betta Fish



1895 564-Tupelo



(25% scale)

*swatches shown at 50% unless stated otherwise.

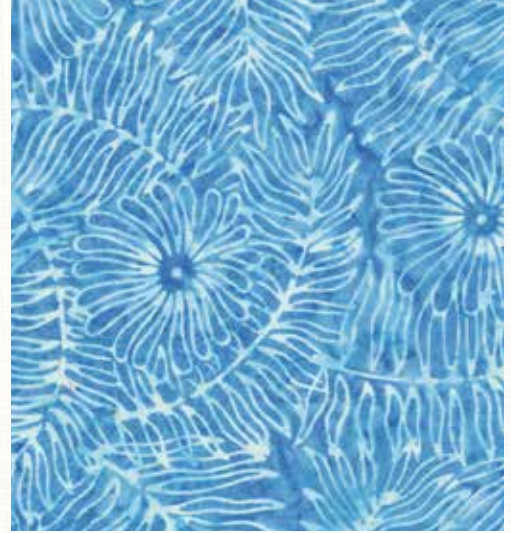
Spring Breeze >



S2314 482-Cotton Candy



S2319 451-Cornflower



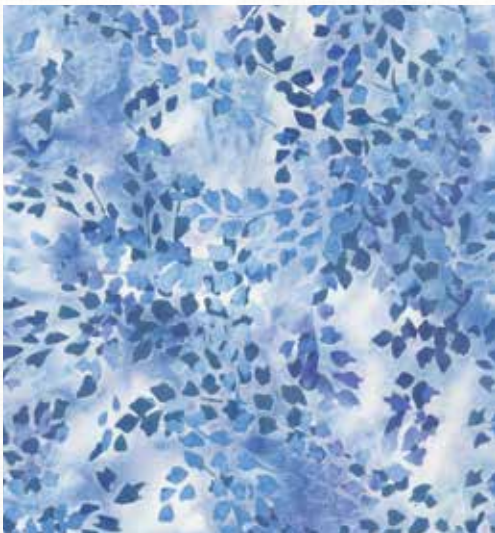
S2323 301-Bluebird



S2312 586-January



S2313 222-Hydrangea



S2324 586-January



S2313 509-Copacabana



S2315 81-Violet



S2322 81-Violet



S2315 541-Peace



S2317 482-Cotton Candy



S2313 183-Galcier



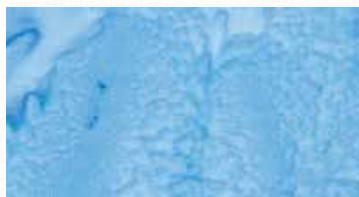
S2314 658-Electric Purple



S2319 658-Electric Purple



1895 120-Hyacinth



1895 301-Bluebird



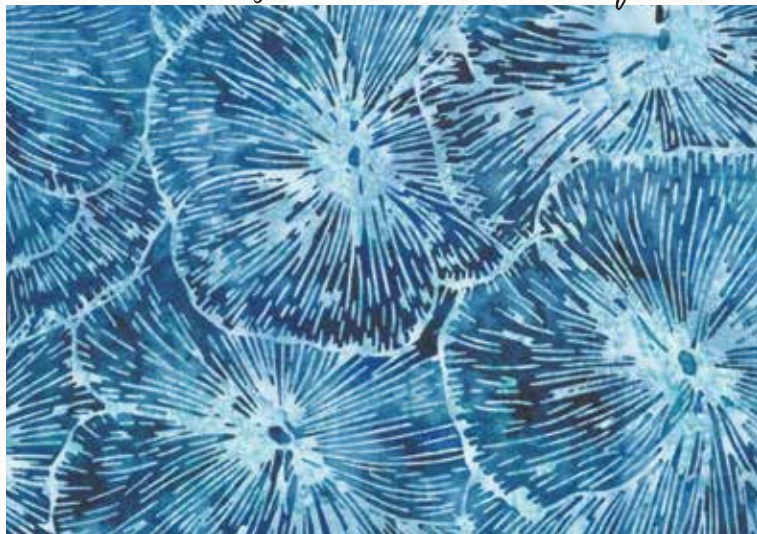
1895 537-Blacklight



(25% scale)

*swatches shown at 50% unless stated otherwise.

Blue Jean Baby >



S2316 242-London



S2314 190-Ice Blue



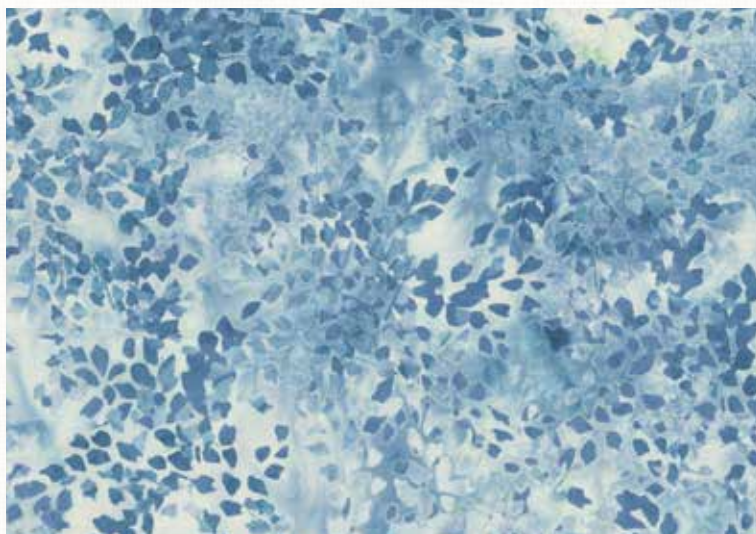
S2313 587-February



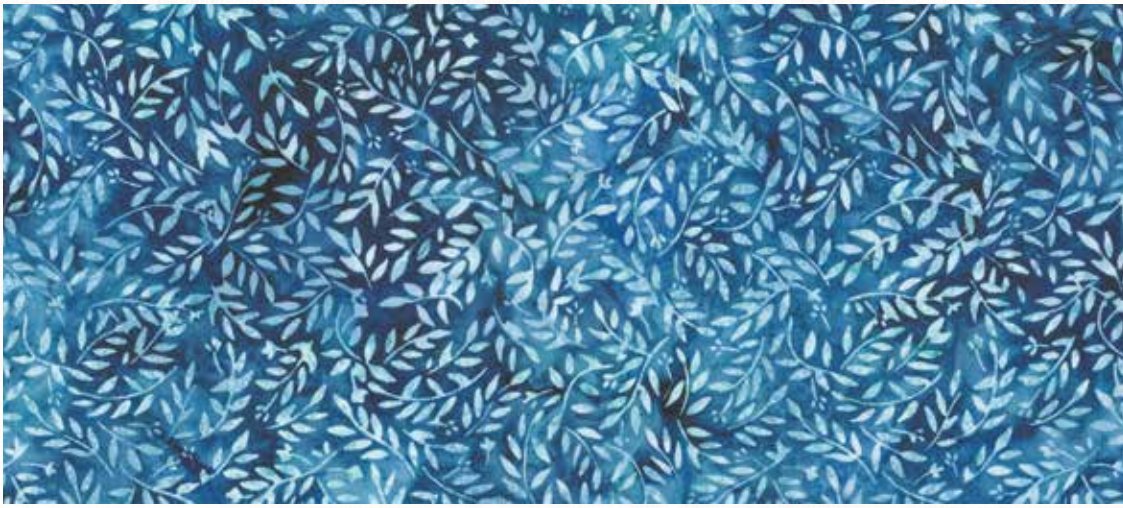
S2317 242-London



S2315 521-Mist



S2324 587-February



S2319 242-London



S2317 190-Ice Blue



S2326 524-Moonstruck



1895 307-Snow



1895 176-Ice



1895 524-Moonstruck



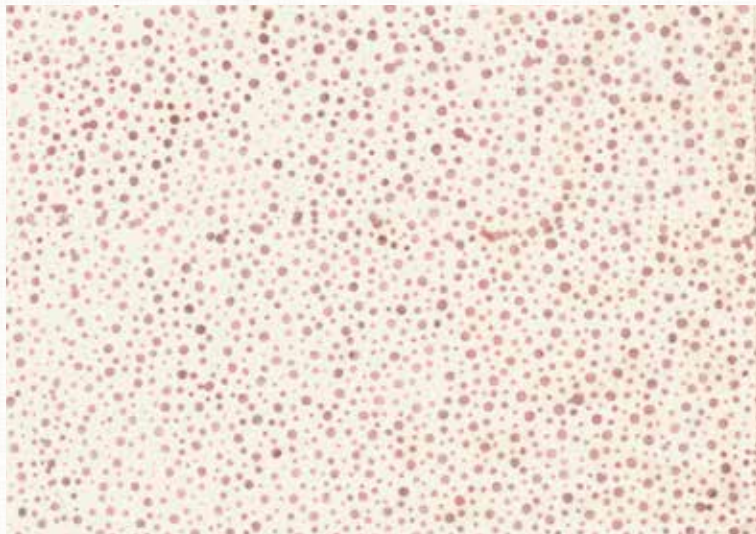
(25% scale)

*swatches shown at 50% unless stated otherwise.

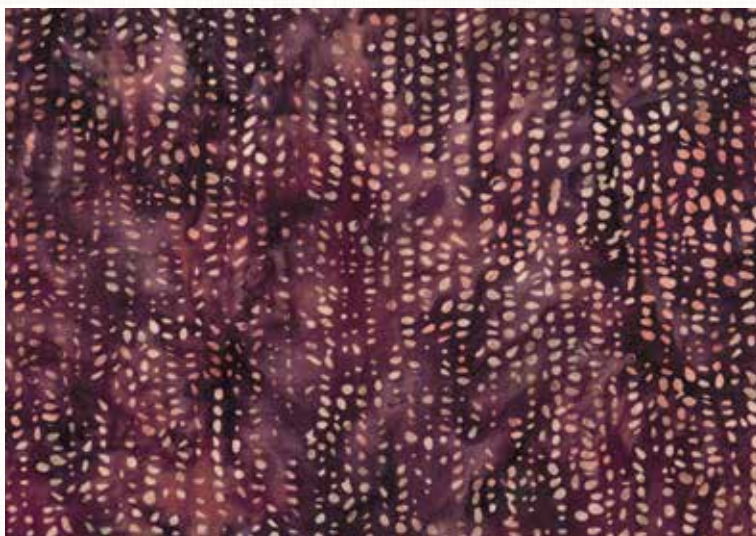
Bordeaux Bliss



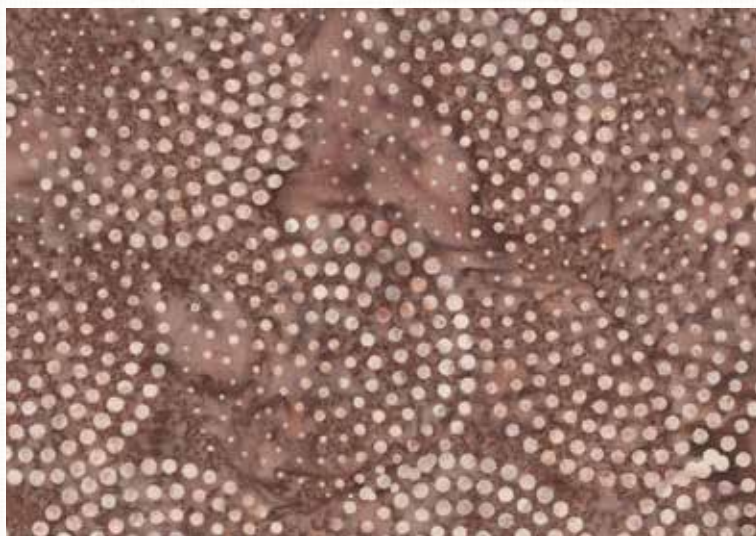
S2313 561-Bordeaux



885 488-Sandcastle



S2328 551-Redwood



S2326 502-Coconut



S2317 24-Alabaster



S2314 607-Tiramisu



S2317 342-Woody



S2319 531-Papyrus



S2313 528-Cinnabar



S2317 561-Bordeaux



S2314 531-Papyrus



S2319 528-Cinnabar



1895 515-Rum Raisin



1895 342-Woody



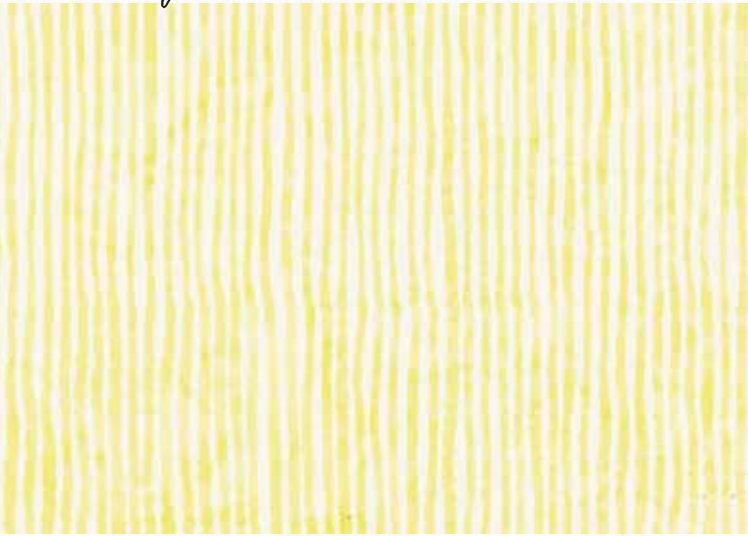
1895 353-Teddy



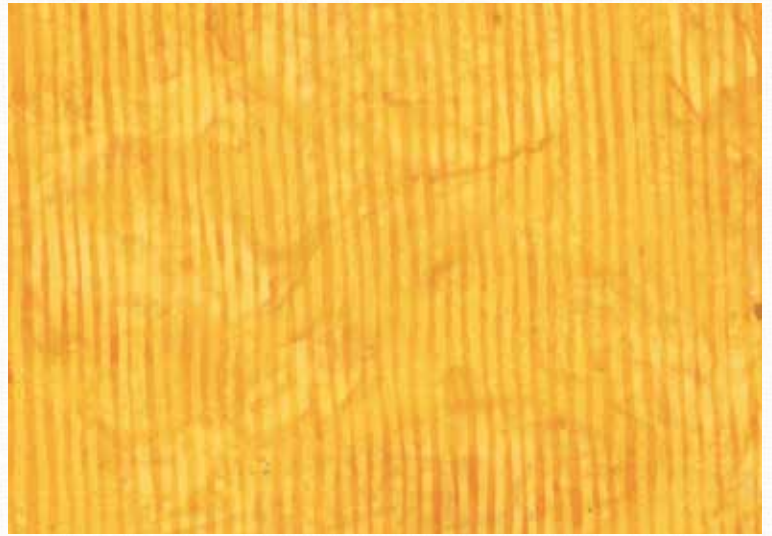
(25% scale)

*swatches shown at 50% unless stated otherwise.

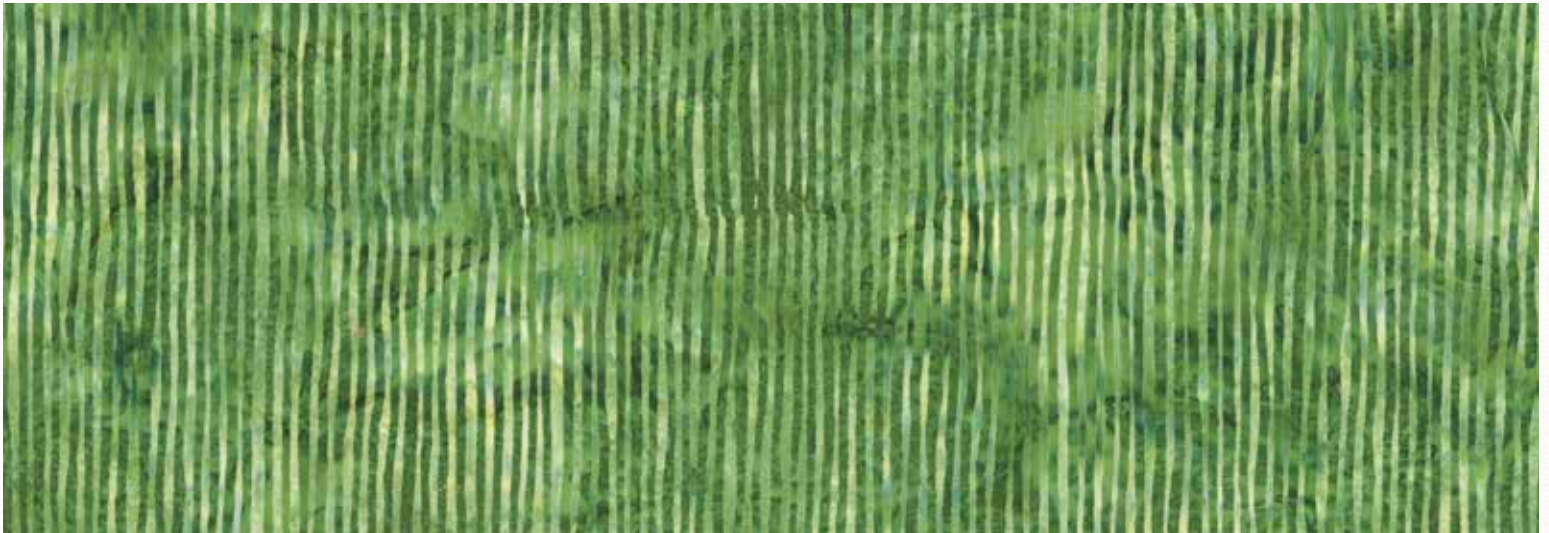
Party Time ▶



R2284 471-Buttercup



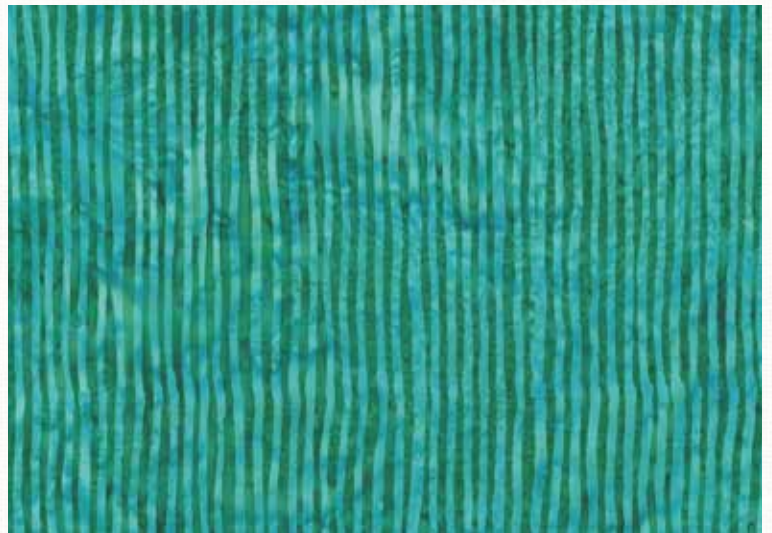
R2284 110-Daffodil



R2284 115-Grass



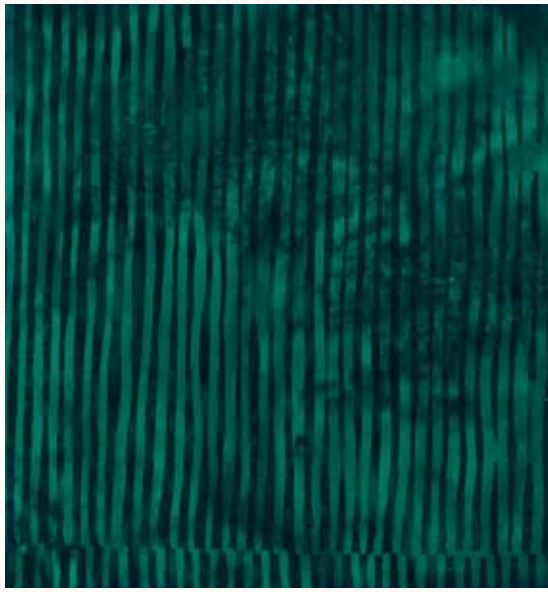
S2325 141-Pine



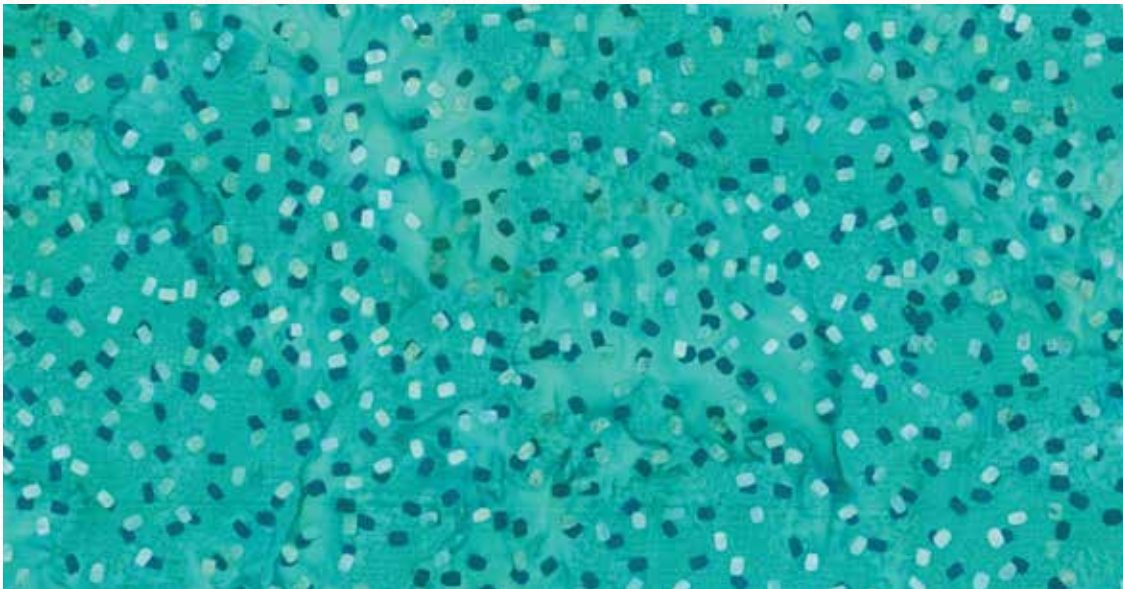
R2284 418-Chamomile



S2325 522-Seagrass



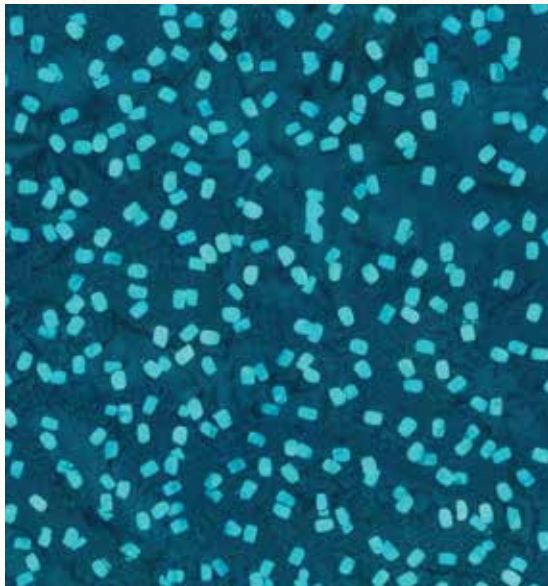
R2284 702-Deep Emerald



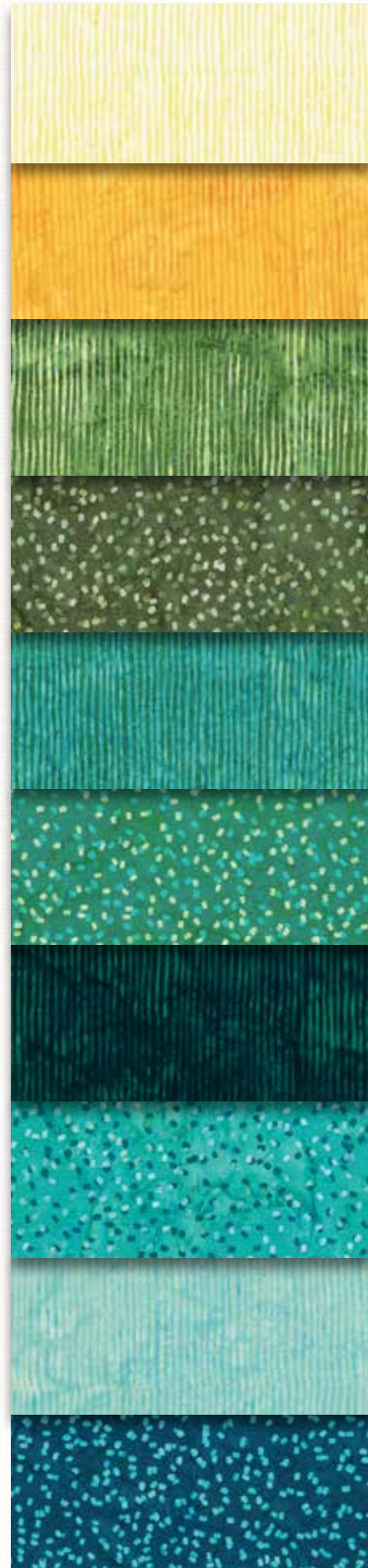
S2325 464-Pool



R2284 579-Augusta



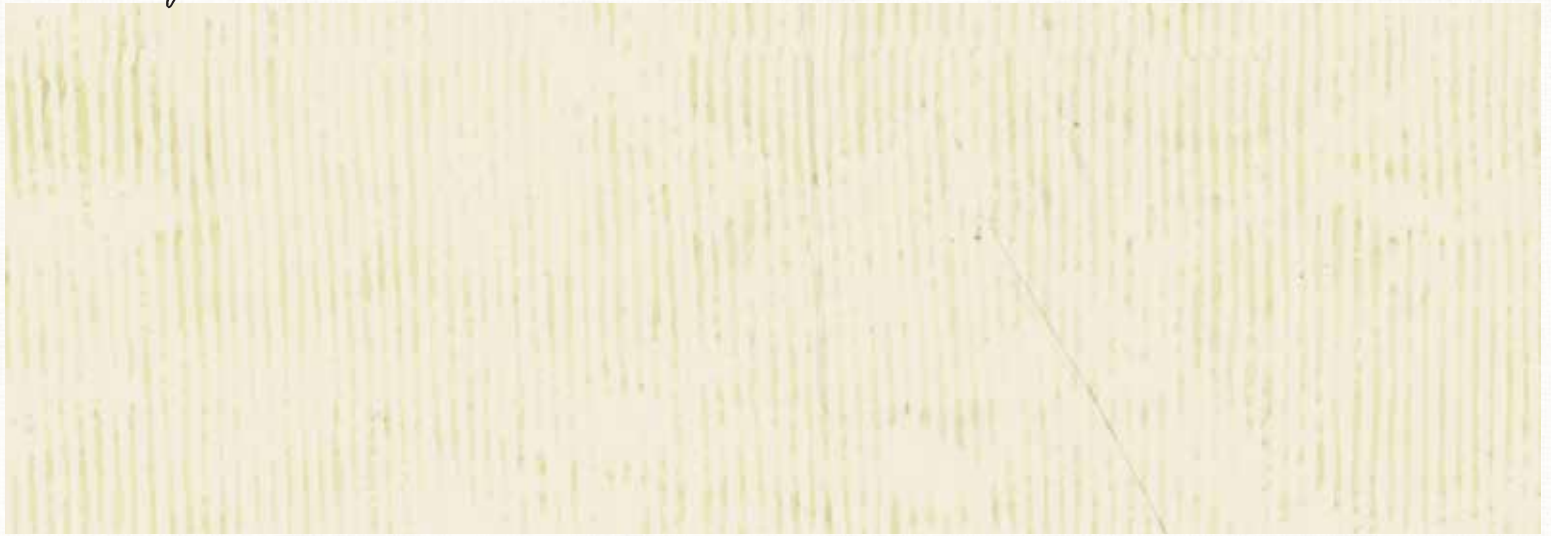
S2325 341-Wade



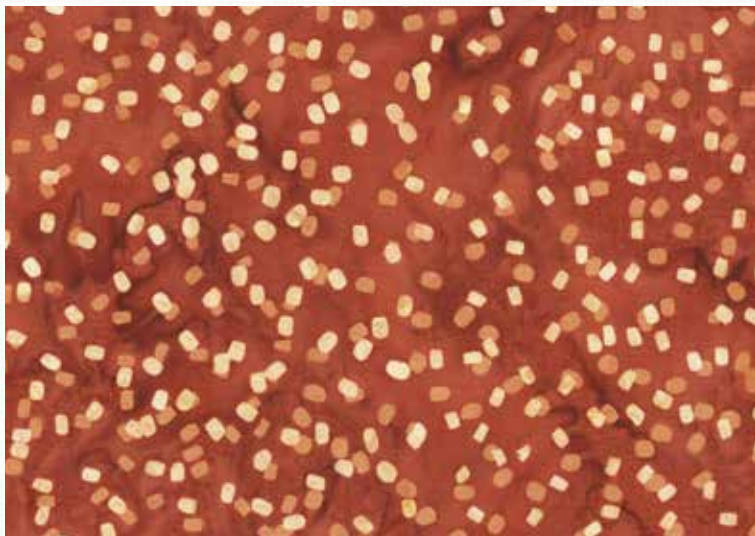
(25% scale)

*swatches shown at 50% unless stated otherwise.

Party Time



R2284 531-Papyrus



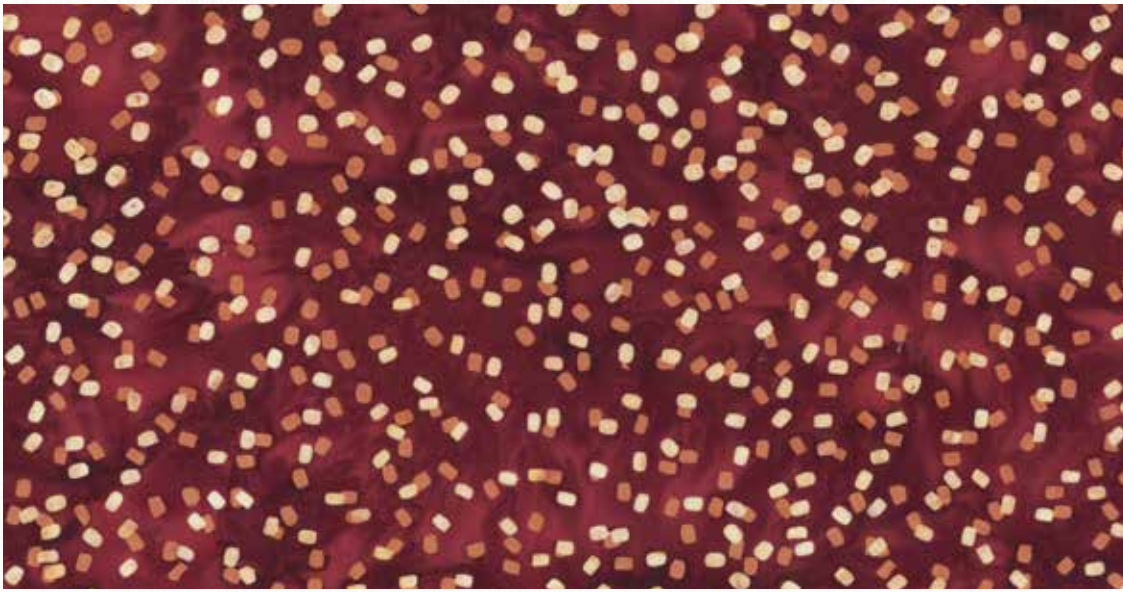
S2325 572-Bourbon



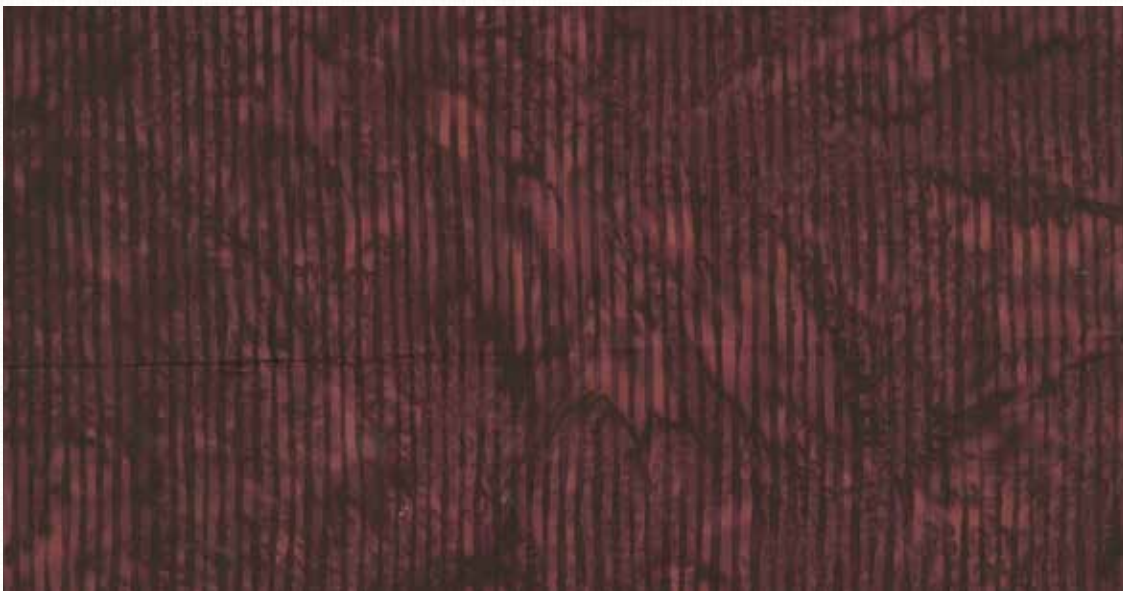
R2284 89-Persimmon



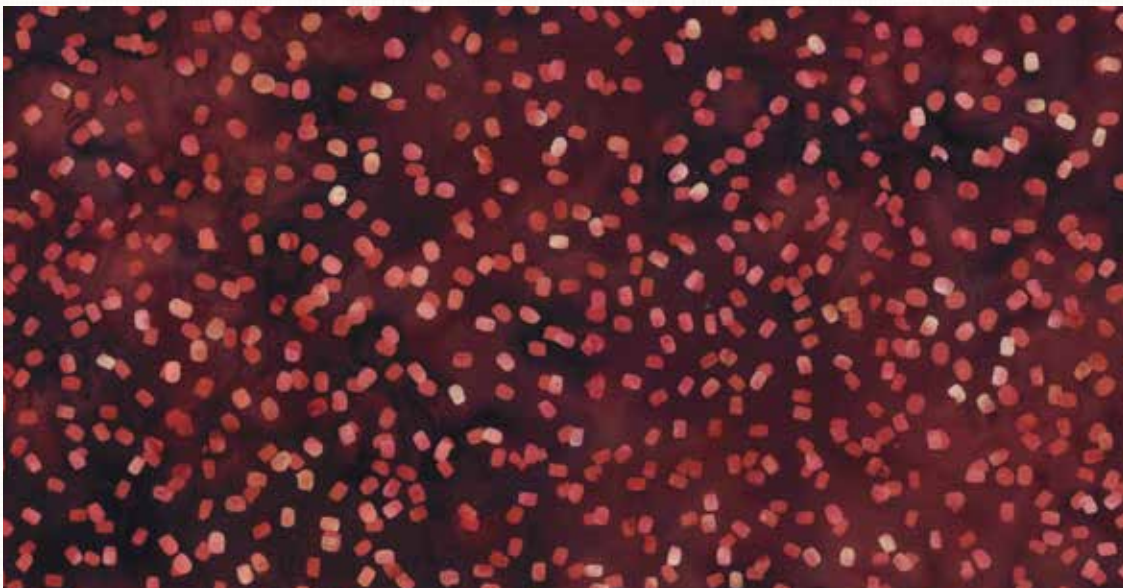
R2284 6-Brown



S2325 551-Redwood



R2284 253-Havana



S2325 533-Nightshade



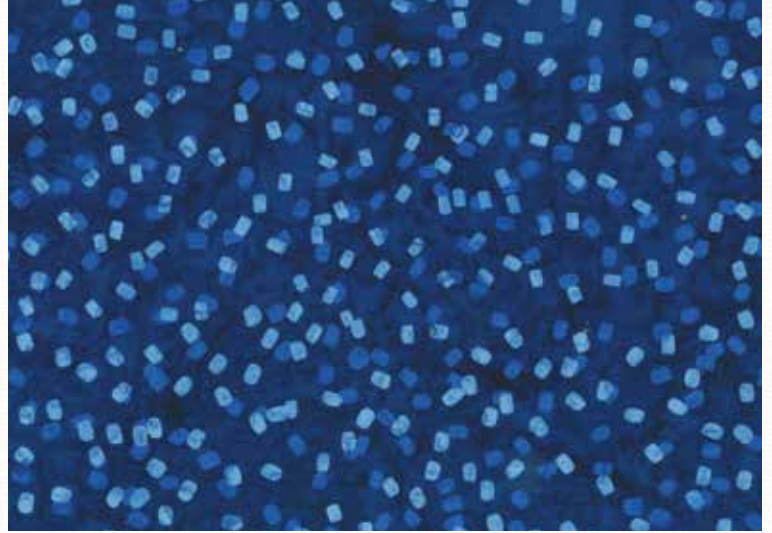
(25% scale)

*swatches shown at 50% unless stated otherwise.

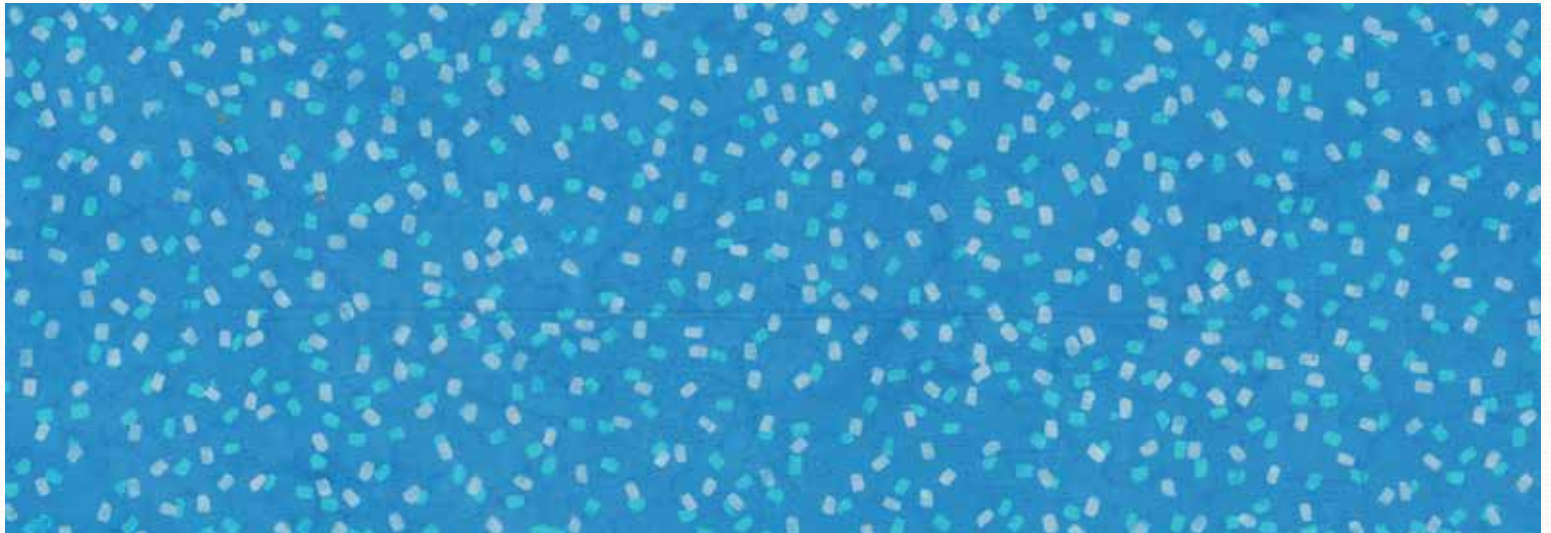
Party Time



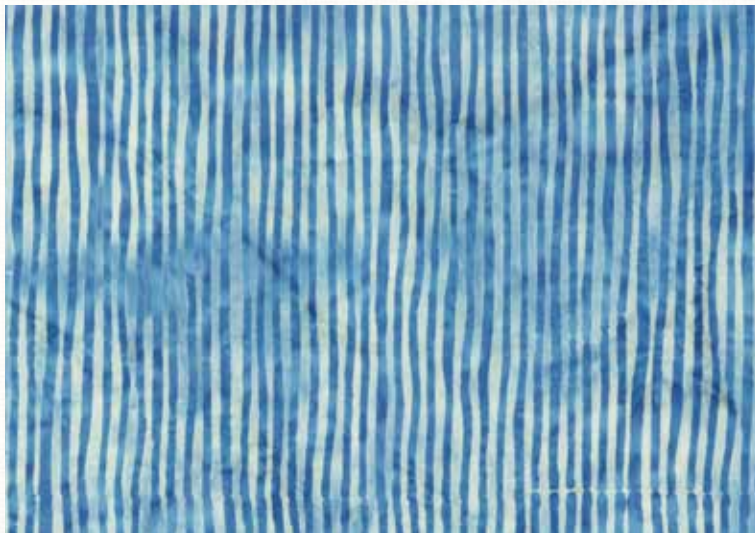
R2284 275-Marlin



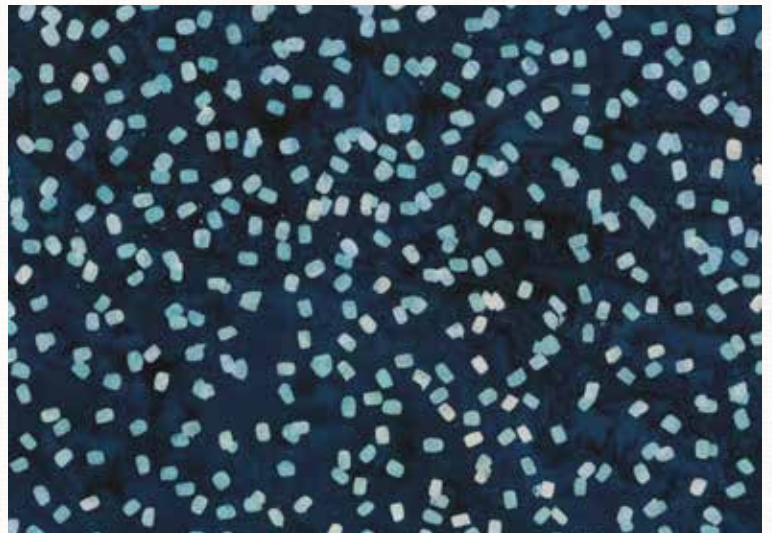
S2325 87-Blueberry



S2325 258-Cerulean



R2284 1-Azure



S2325 524-Moonstruck



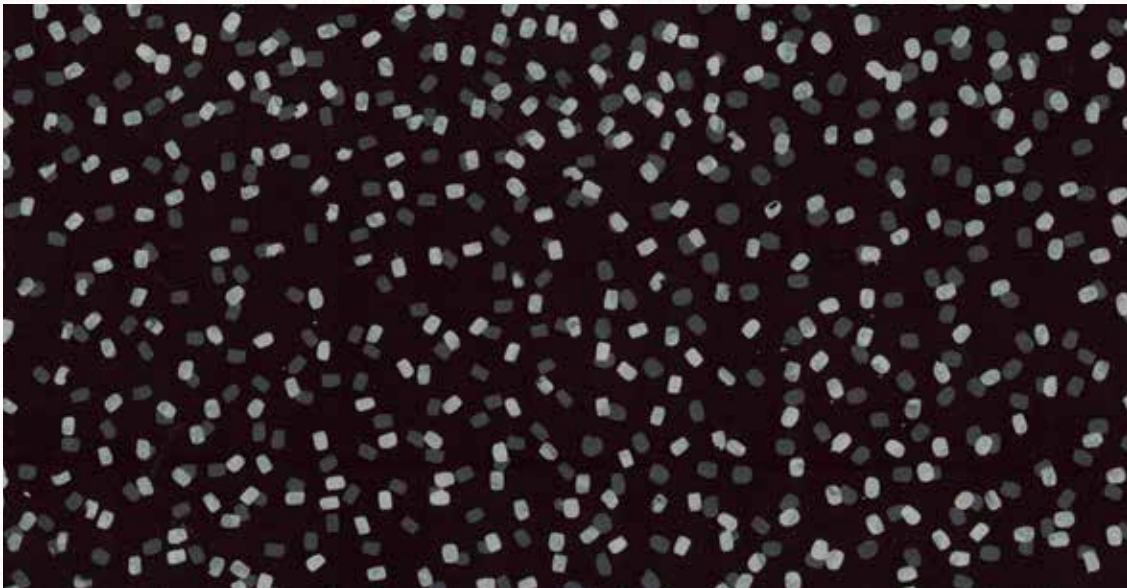
R2284 65-Denim



S2325 190-Ice Blue



R2284 173-Smoke



S2325 4-Black



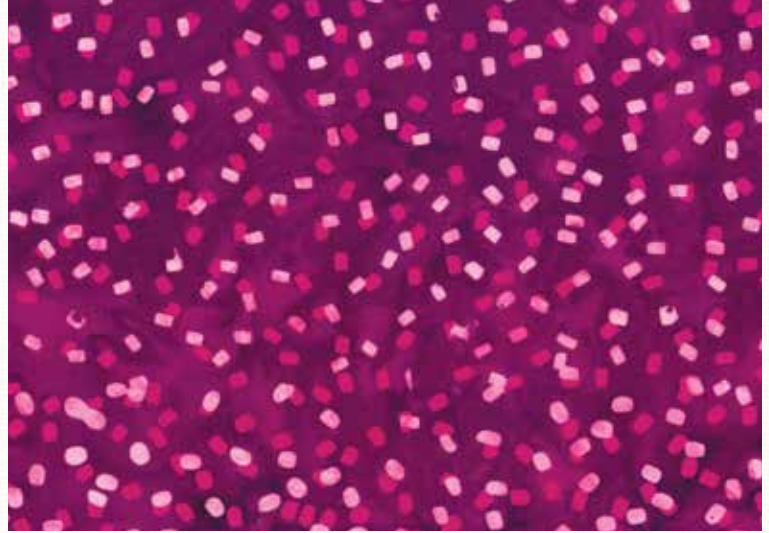
(25% scale)

*swatches shown at 50% unless stated otherwise.

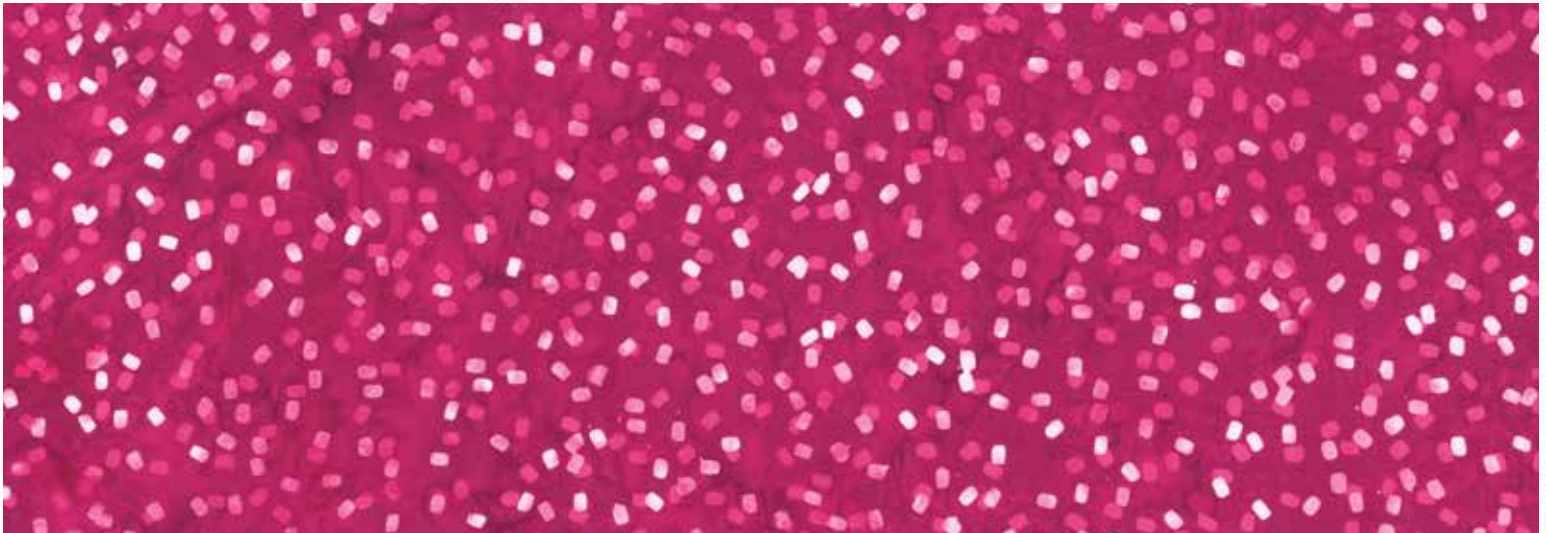
Party Time



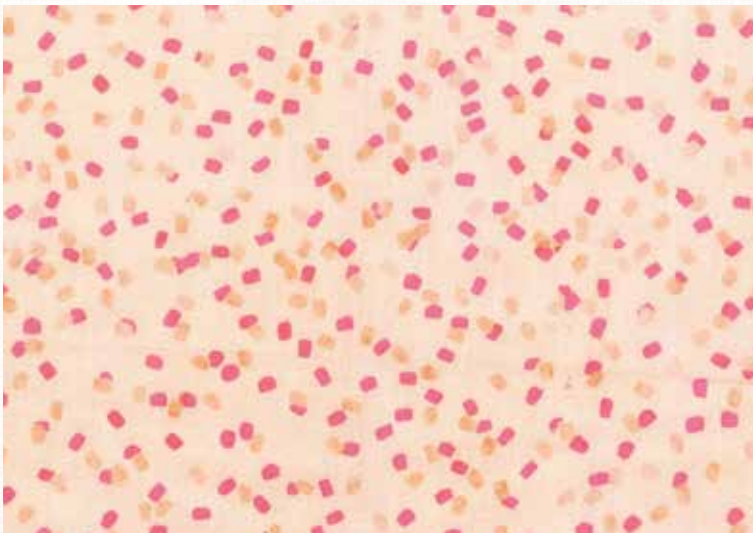
R2284 423-Marsala



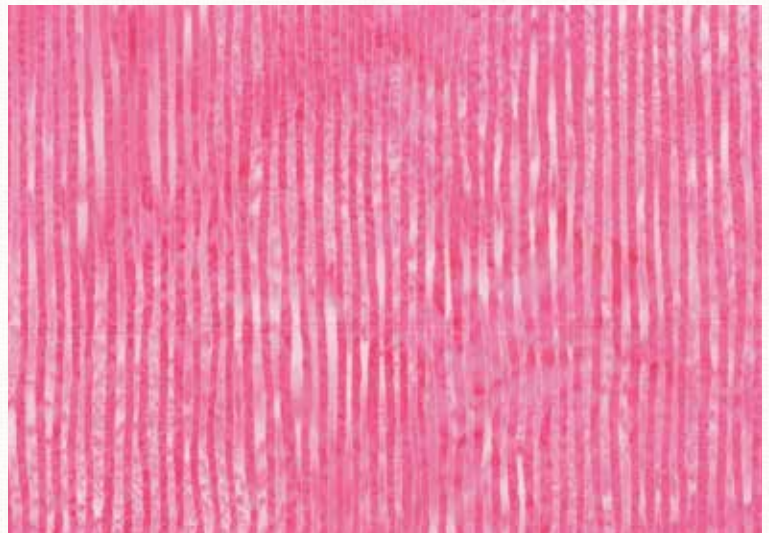
S2325 72-Magenta



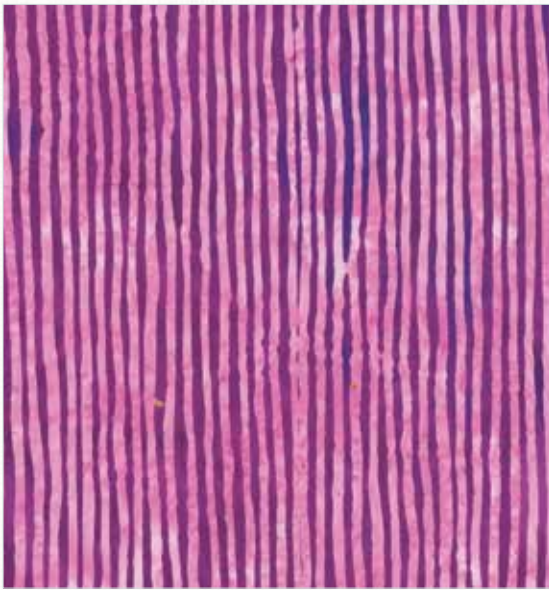
S2325 23-Fuchsia



S2325 404-Bubblegum



R2284 12-Pink



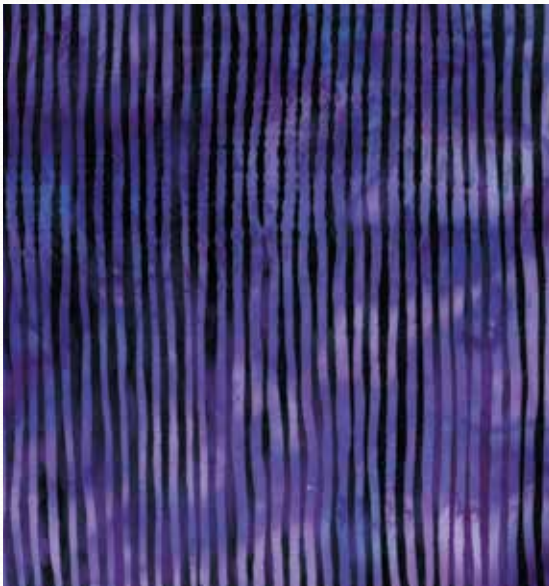
R2284 438-Crocus



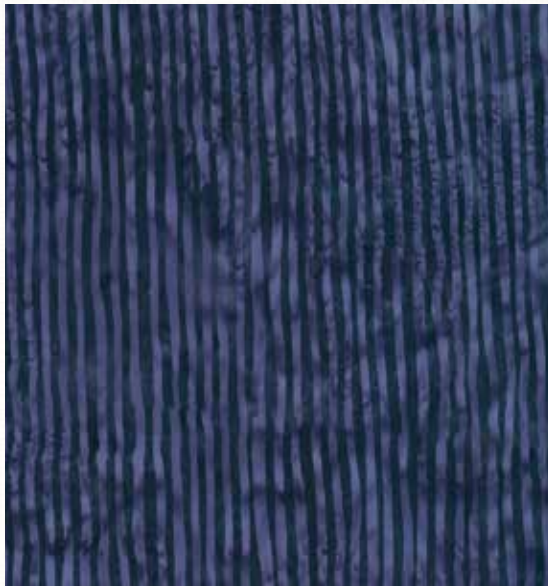
R2284 474-Punch



S2325 235-Agate



R2284 358-Vegas



R2284 701-Deep Amethyst



(25% scale)

*swatches shown at 50% unless stated otherwise.

BALI POPS

GENERATION 11



BP 160-Spice



BP 222-Hydrangea

Spice up your life with these rich and lush earth tones or find peace in a garden of hydrangeas with this gorgeous array of lights, blues and purples. These 11th generation Hoffman Bali Pops® feature 40 unique 2 ½" strips of Hoffman Bali Batiks - no duplicates! Each colorway offered as a six pack. 100% cotton.

BALI POPS

GENERATION 11



BP 65-Denim

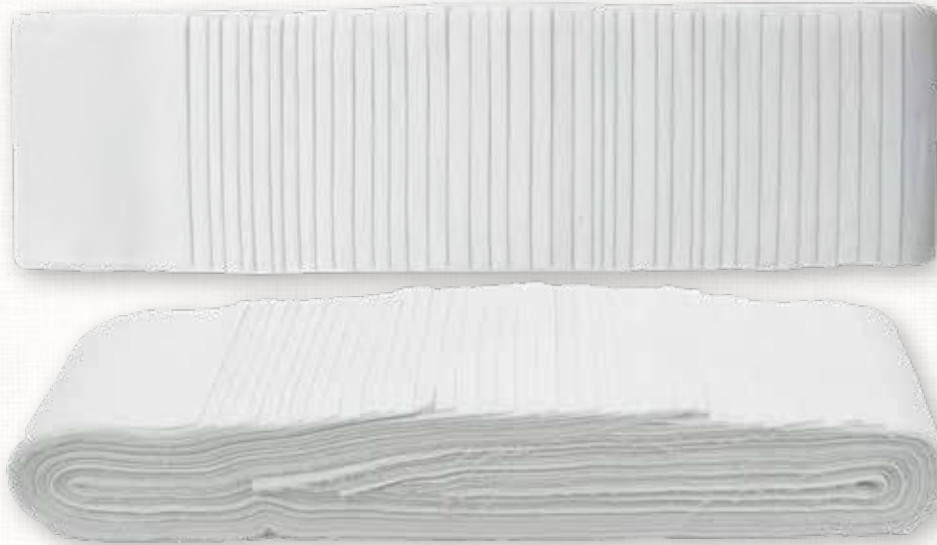


BP 181-Rainbow

A tried and true color palette of classic denim, deep red and white or feel the brightness of Summer with this electric rainbow! These 11th generation Hoffman Bali Pops® feature 40 unique 2 ½" strips of Hoffman Bali Batiks - no duplicates!
Each colorway offered as a six pack. 100% cotton.

BALI POP

GENERATION 11



BP 618-Zinc

Make your fabrics POP by pairing them with this pre-cut set of 40 2 ½" strips in Zinc white solid fabric!
Offered as a six pack. 100% cotton.



BP 122-Jet

Make your fabrics POP by pairing them with this pre-cut set of 40 2 ½" strips in Jet black solid fabric!
Offered as a six pack. 100% cotton.

Hoffman Traditional Fabric Kits

FARMHOUSE STAR

by Judy Niemeyer of Quiltworx



JNFS 119-Vintage

Quilt finishes at 40" x 40"

Woodgrain, gorgeous hydrangeas and home textures all in one quilt. Bring the beauty and class of a Vintage Farmhouse right into your home with this stunning quilt designed by Judy Niemeyer of Quiltworx featuring McKenna Ryan's *Vintage Farmhouse* fabric collection.

Judy Niemeyer Pattern Included in Kit.

Quiltworx.com
Judy Niemeyer Quilting

VILLAS AT DAWN

by McKenna Ryan

MRVAD 119-Vintage

Project finishes at 25" x 29 1/2"

A picturesque scene from a gorgeous village has us dreaming of our next adventure! A classic and gorgeous look from McKenna Ryan featuring her *Vintage Farmhouse* fabric collection. Fabric for binding is included.

McKenna Ryan Pattern Included in Kit.


McKenna Ryan

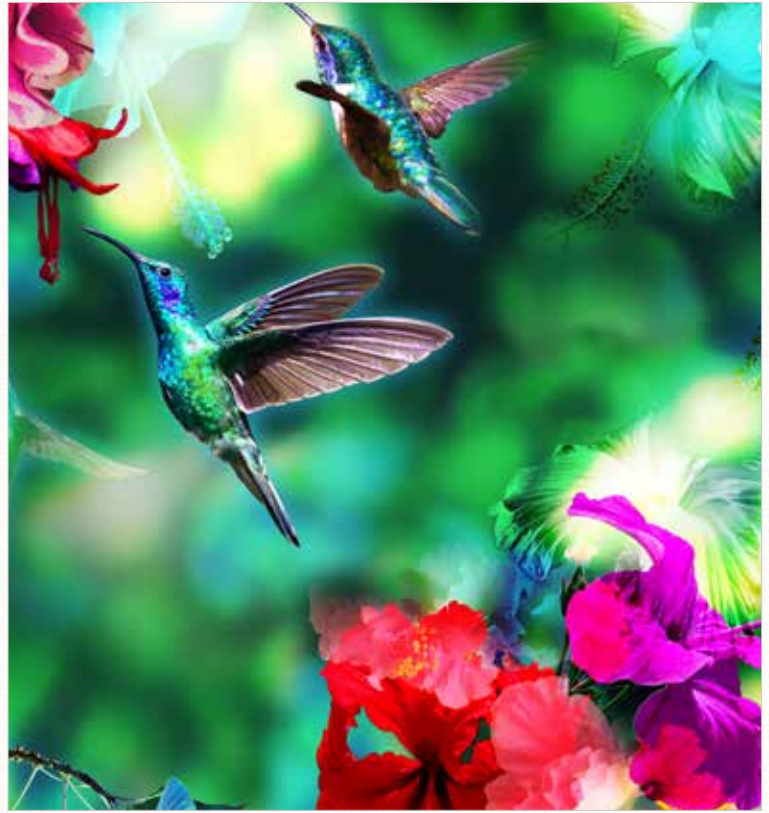


WIDE BACKS

108" WIDE



WR4654 135-Pastel



WR4583 295-Hummingbird

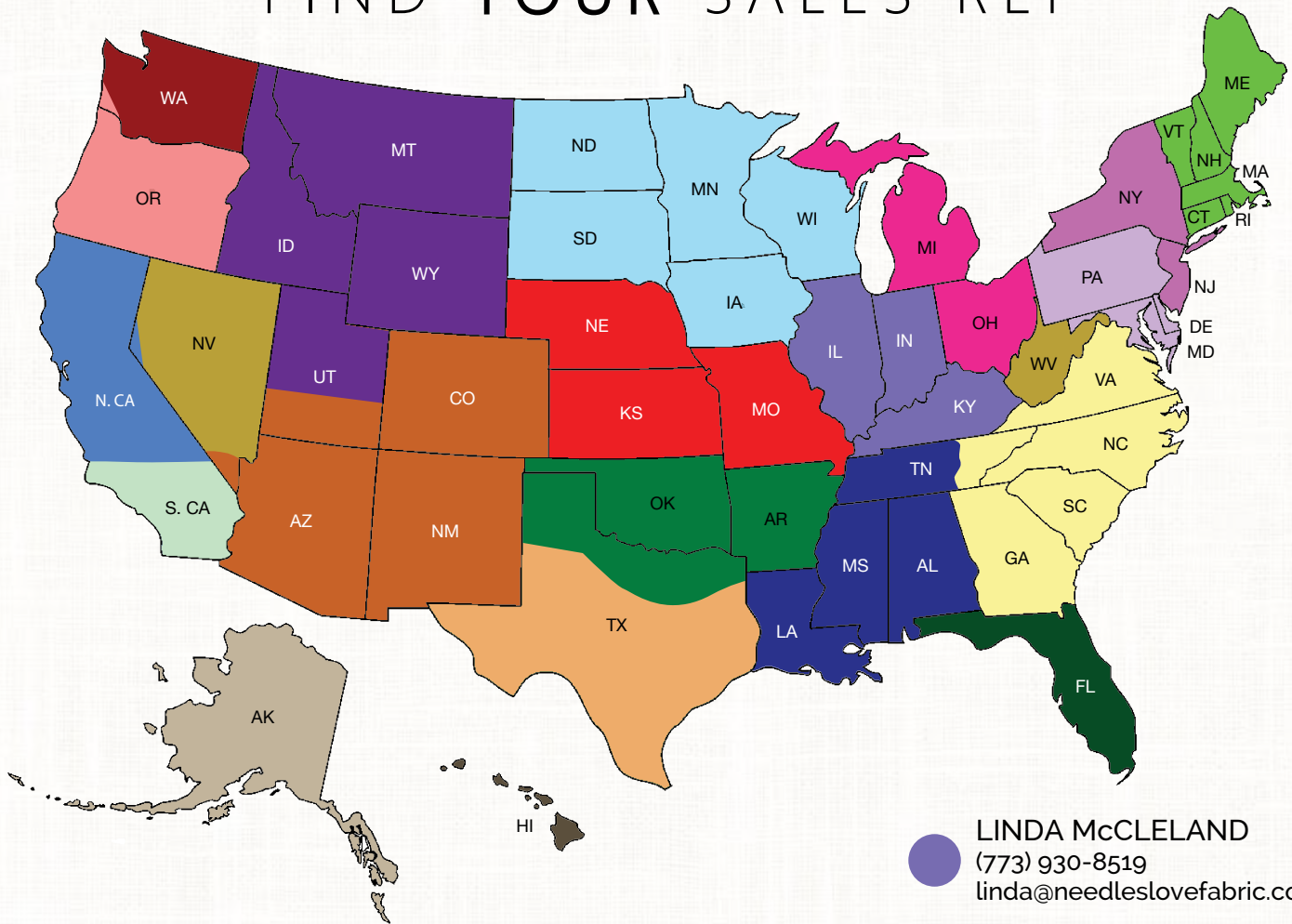


WR4629 324-Dragonfly



WQ4511 453-Dahlia

FIND YOUR SALES REP



HOFFMAN FABRICS HQ
(800) 547-0100
orders@hoffmanfabrics.com

BOB ADAMS
(214) 704-9228
adamsrl@swbell.net

MARET ANDERSON
(907) 317-1968
maret.fabricrep@gmail.com

KATHY BEAL
(541) 279-4563
kathybealtextiles@gmail.com

JOE CLARK
(617) 510-5609
joelclark900@gmail.com

BRIAN COX
(352) 735-3189
bjccotton@yahoo.com

SANDY CRAIG
(314) 753-5749
sandy.fabricrep@gmail.com

KIM DENEALT
(804) 852-3934
kudzsew@gmail.com

CHRIS GARDNER
(330) 888-9084
cgfabric@yahoo.com

DOUG & MYRA HIGGINS
D (office): (641) 782-4959
(cell): (515) 778-4959
M: (641) 340-2290
myrahiggins@hotmail.com

KIMBERLY HUCKABAY (+ Reno)
(916) 826-2402
kimberlydhuckabay@gmail.com

ANDY JACOBS
(415) 793-4101
jakeasales@gmail.com

MARGARET JONES (+ Las Vegas & Pahrump)
(303) 913-2855
maggiejones112@gmail.com

SHIRLEY MANDLER
(443) 295-3810
shirleym@smandler.com

LINDA McCLELAND
(773) 930-8519
linda@needleslovefabric.com

ERIN PRATT
(360) 430-2392
nwfabrics@yahoo.com

ELLEN PRIMACK
(949) 212-8123
ellenbrella@aol.com

BOB VANN
(305) 519-7098
bobbvsales@gmail.com

CAROLYN WILLIAMS
(307) 673-4350
carolyn@307onthefty.com

STEPHANIE WINSLOW
(816) 213-8704
swinslow09@gmail.com

ANDREW ZAER
(201) 233-4788
aleezaer@aol.com

KIRSTEN HEFFERN
International
(800) 547-0100 Hoffman Fabrics HQ
(949) 770-2922 for overseas
kirsten@hoffmanfabrics.net



hoffmanfabrics.com // 800.547.0100
25792 Obrero Drive. Mission Viejo. CA 92691